



Date:15/09/2020  
10:00AM

## Daily Report for COVID 19 Virus

Situation report about Covid 19 epidemiological, presented the daily detected cases.

### Summary of the epidemiological situation

Table (1) shows the numbers of cases

	Confirmed		Active		Recovered		Deaths	
	Community	Retained	Community	Retained	Community	Retained	Community	Retained
Today	79	0	1683	5	60	0		0
Accumulative	1886	120			189	114	14	1
Total accumulative	2006		1688		303		15	

Table (2) shows the number of samples and the positive

	Samples		Positive	
	Community	Retained	Community	Retained
Today	1590	0	79	0
Accumulative	26444	1946 *	1886	120
Total accumulative	28389		2006	

\*Since the break out of covid-19 within community

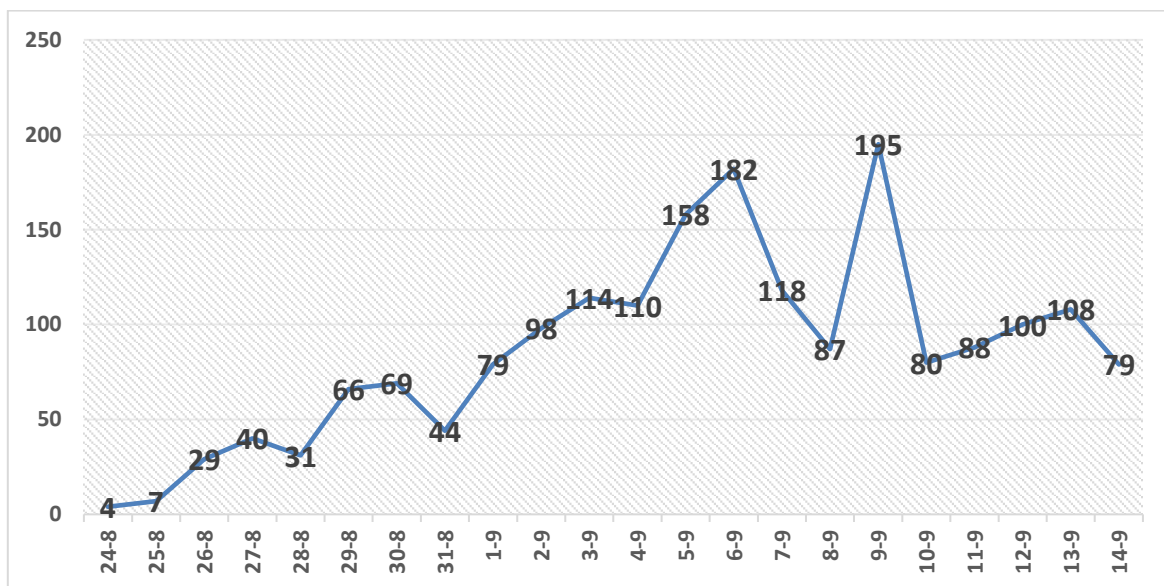
Annexes (A)



## Local reported cases within community – Emergency level (D)

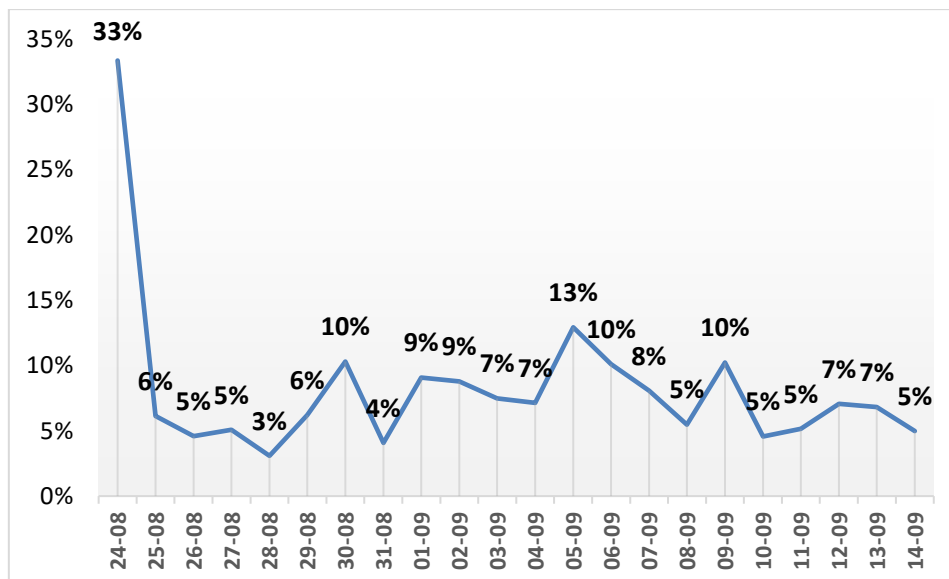
• The total number of confirmed cases is 1,886, of which 1683 are still active cases receive medical care in hospitals and isolation centers (European Gaza Hospital - Turkish Friendship - Deir Al-Balah Center), 189 cases fully recovered and were discharged, while the number of deaths reached 14 deaths.

### I. Daily number of new cases within the community



Graph (1) shows number of new cases per day within the community

### II. The percentage of positive tests of the daily samples



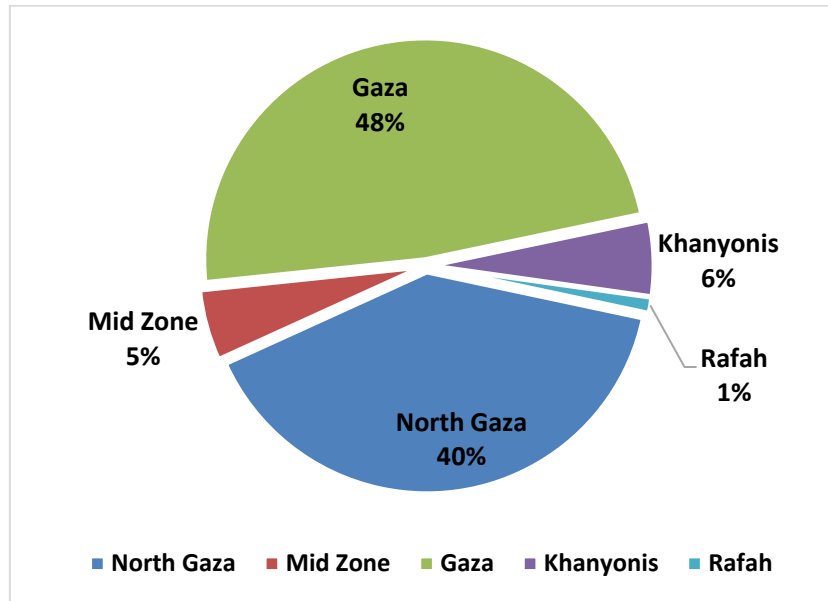
Graph (2) shows percentage of positive tests of the examined samples per day



### III. Incidence of cases by governorate

Governorate	Cases	Population	Incidence rate per 100,000
North Gaza	752	416,906	180
Gaza	912	690,111	132
Mid zone	97	325,884	30
Khanyonis	104	413,727	25
Rafah	21	260,117	8
Gaza strip	1886	2,106,745	90

### IV. Geographical distribution of confirmed cases within the community



Graph (2) shows geographical distribution of cases within the community per governorate.



## Imported cases

- Total number of confirmed imported cases is 120. Out of this total, 5 are still active cases in the isolation hospital, 114 cases fully recovered and were discharged, and one died.

## Health quarantine centers

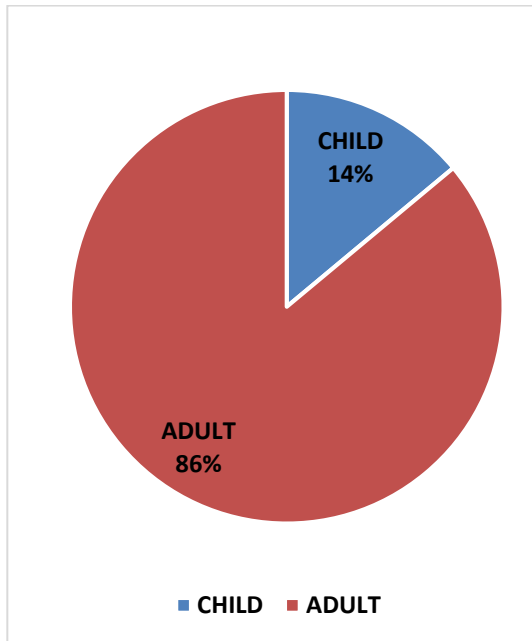
- Since 15/3/2020, all travelers coming through Rafah and Beit Hanoun (Erez) crossings had to undergo a compulsory quarantine at one of the MOH designated facilities.

The total number of cases at quarantine facilities 248 case. The number of designated quarantine facilities were 5 centers, including schools, hotels, primary health care centers, and hospitals, quarantine centers rooms distributed across the five governorates of the Gaza Strip.

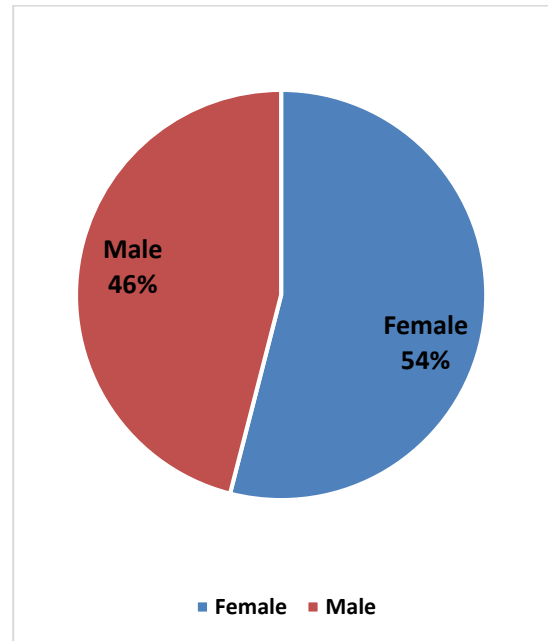
Annexes (B)

### **I. Disaggregation of quarantined cases by sex and age group**

- Approximately 46% of people in isolation and quarantine centers (114) are males, while children represent 14% of that total



Graph (4) shows percentage of quarantined people by age group

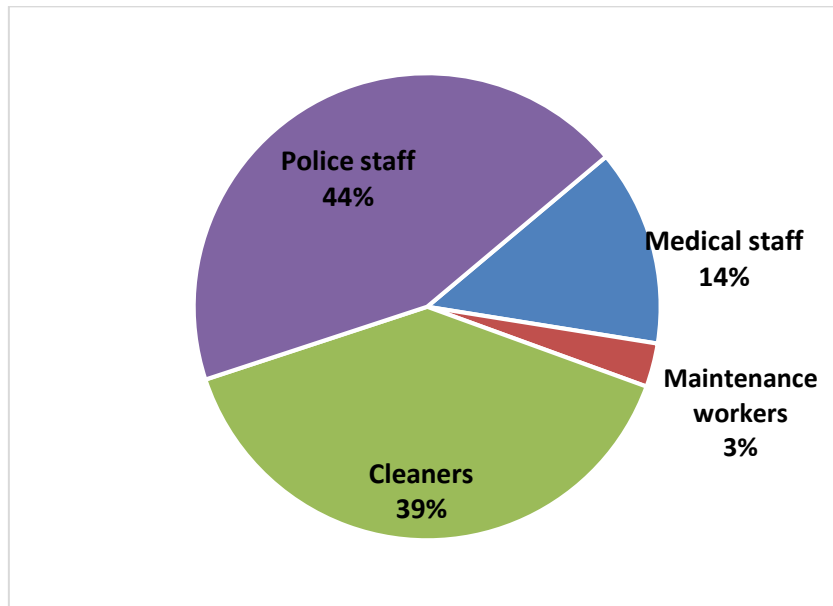


Graph (3) shows percentage of quarantined people by sex



## II. Service providers in the quarantine centers

- The number of service providers in quarantine centers reached 100 employees, 44% of them are police staff and 14% are medical staff, while the percentage of maintenance workers is 3%.



Graph (5) shows percentage of service providers in the quarantine centers



Annexes

Annexes (A)

Annexes (B)

**Distribution of cases at quarantine facilities**

No	Quarantine facility	Number of quarantined cases
1.	Blue Beach hotel	241
2.	Asdaa Center	2
3.	Shifa Hospital	2
4.	Rantisi Hospital	2
5.	Naser Hospital	1
	<b>Total quarantined</b>	248