



Date: November 17, 2020

10:00AM  
Last 24 Hr.

## Daily Report for COVID 19 Virus

Situation report about Covid 19 epidemiological, presented the daily detected cases.

### Summary of the epidemiological situation

Table (1) shows the numbers of cases

|       | Confirmed | Recovered | Deaths | Active |
|-------|-----------|-----------|--------|--------|
| Today | 486       | 305       | 2      | 3545   |
| Total | 11471     | 7876      | 50     |        |

Table (2) shows the number of samples and the positive

|                    | Samples  | Positive |
|--------------------|----------|----------|
| Today              | 2412     | 486      |
| Total accumulative | 156513 * | 11471    |

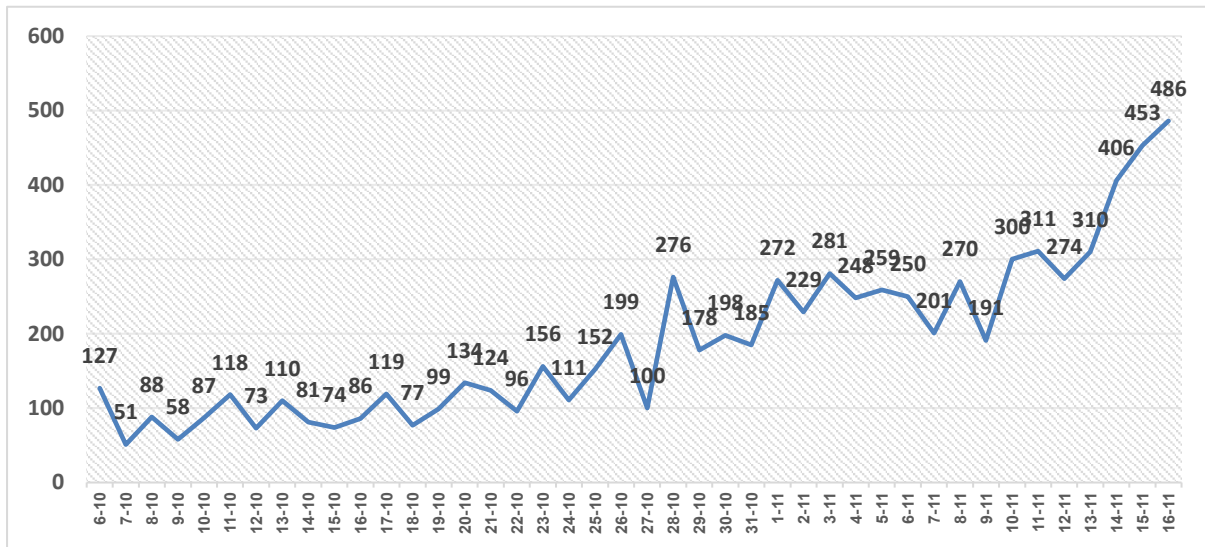
\*Since the break out of covid-19 within community



## Local reported cases within community – Emergency level (D)

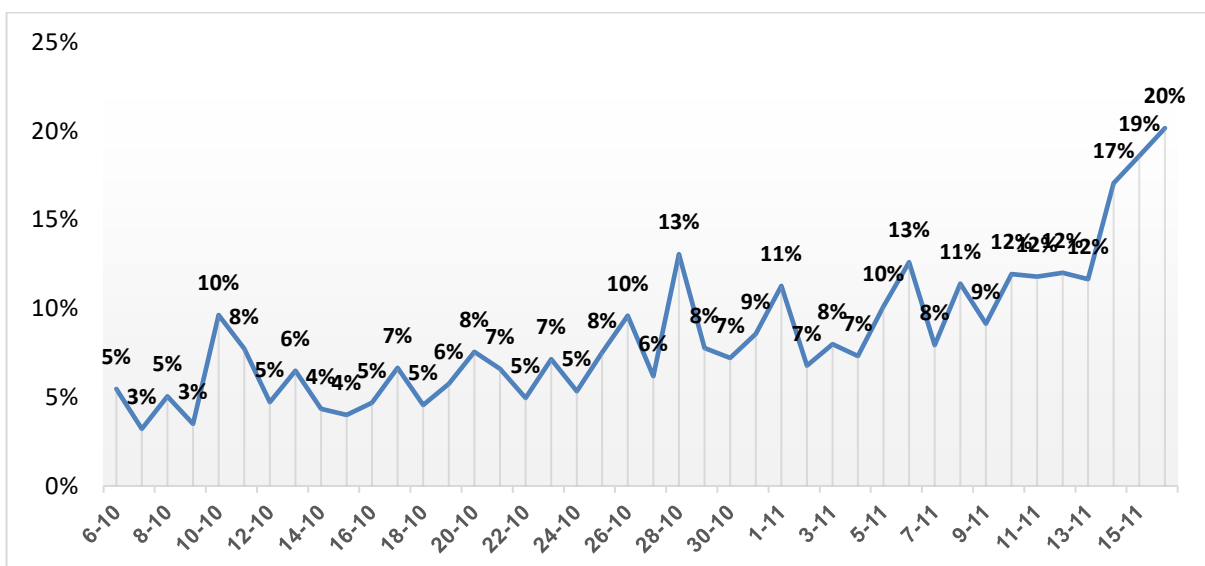
- The total number of confirmed cases is 11233, of which 3505 are still active cases receive medical care in hospitals and isolation centers, 7679 cases fully recovered and were discharged, while the number of deaths reached 49 deaths.

### I. Daily number of new cases within the community



Graph (1) shows number of new cases per day within the community

### II. The percentage of positive tests of the daily samples



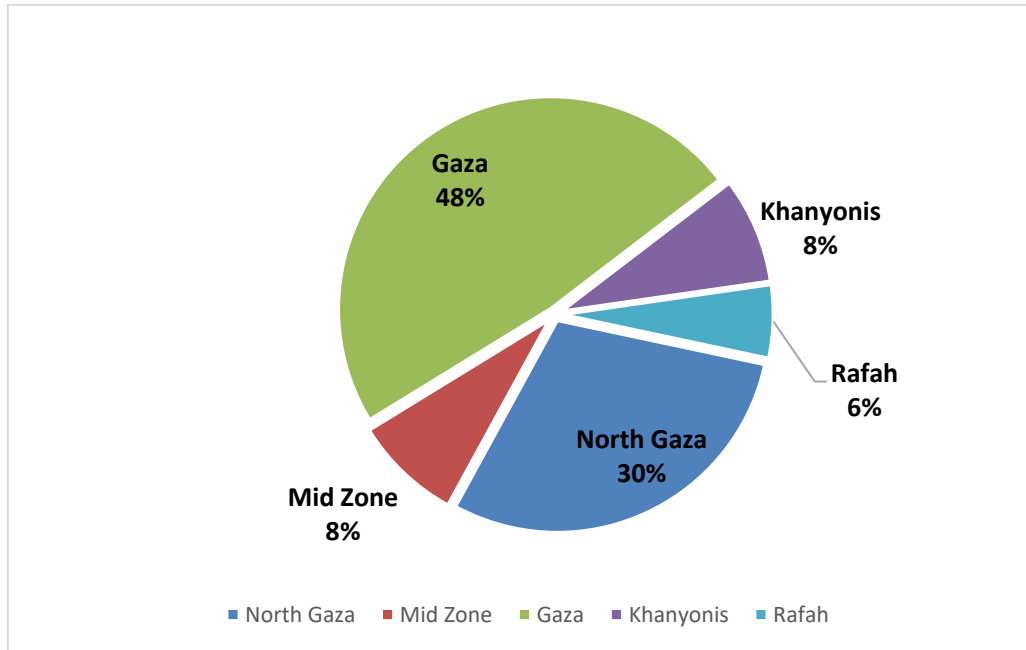
Graph (2) shows percentage of positive tests of the examined samples per day



### III. Incidence of cases by governorate

| Governorate | Cases | Population | Incidence rate per 100,000 |
|-------------|-------|------------|----------------------------|
| North Gaza  | 3399  | 416,906    | 815                        |
| Gaza        | 5548  | 690,111    | 804                        |
| Mid zone    | 950   | 325,884    | 292                        |
| Khanyonis   | 930   | 413,727    | 225                        |
| Rafah       | 644   | 260,117    | 248                        |
| Gaza strip  | 11471 | 2,106,745  | 544                        |

### IV. Geographical distribution of confirmed cases within the community



Graph (2) shows geographical distribution of cases within the community per governorate.