



Date November 24, 2020

10:00AM  
Last 24 Hr.

## Daily Report for COVID 19 Virus

Situation report about Covid 19 epidemiological, presented the daily detected cases.

### Summary of the epidemiological situation

Table (1) shows the numbers of cases

	Confirmed	Recovered	Deaths	Active
Today	685	187	3	6499
Total	16142	9571	72	

\*Since the break out of covid-19 within community

Closed Cases		
Worldwide	Gaza Strip	
40,153,283 (97%)	9,571(99%)	Recovered
1,378,708 (3%)	72 (1%)	Deaths
41,531,991	9,643	Total Closed
Active Cases		
19,548,310	6499	Number



## Local reported cases within community – Emergency level (D)

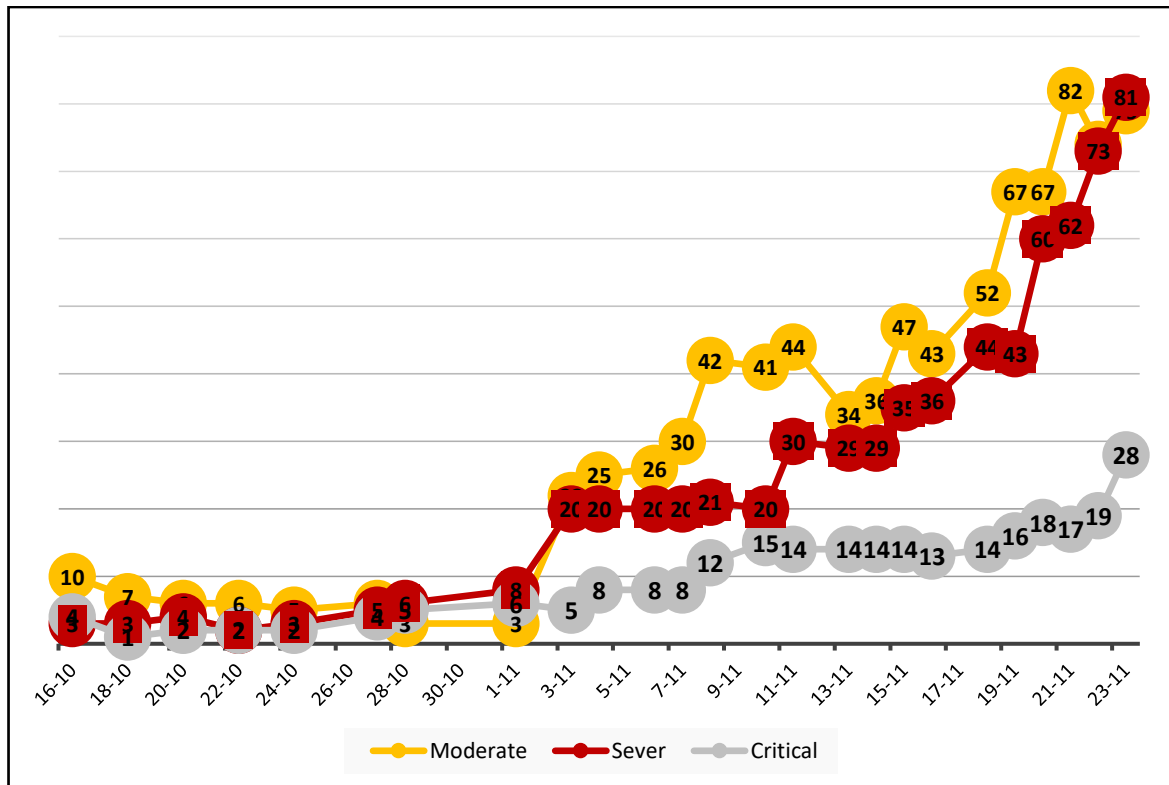
- The total number of confirmed cases is 15898, of which 6487 are still active cases receive medical care in hospitals and isolation centers, 9340 cases fully recovered and were discharged, while the number of deaths reached 71 deaths.

### I. Classification of active cases according to severity

Table (2) shows the classification of cases according to the degree of severity

Total	Other	Critical	Sever	Moderate	Mild	Classification
6004	97	28	81	79	6214	Total
100%	1.5%	0.4%	1.2%	1.2%	95.6%	Percent

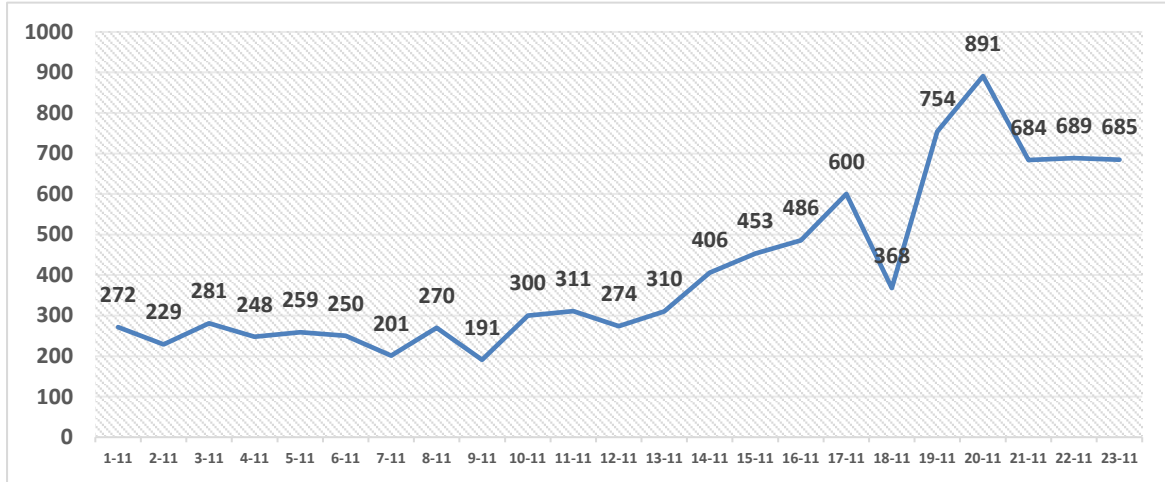
### II. Daily classification of active cases according to severity



Graph (1) Shows the daily classification of cases according to degree of severity

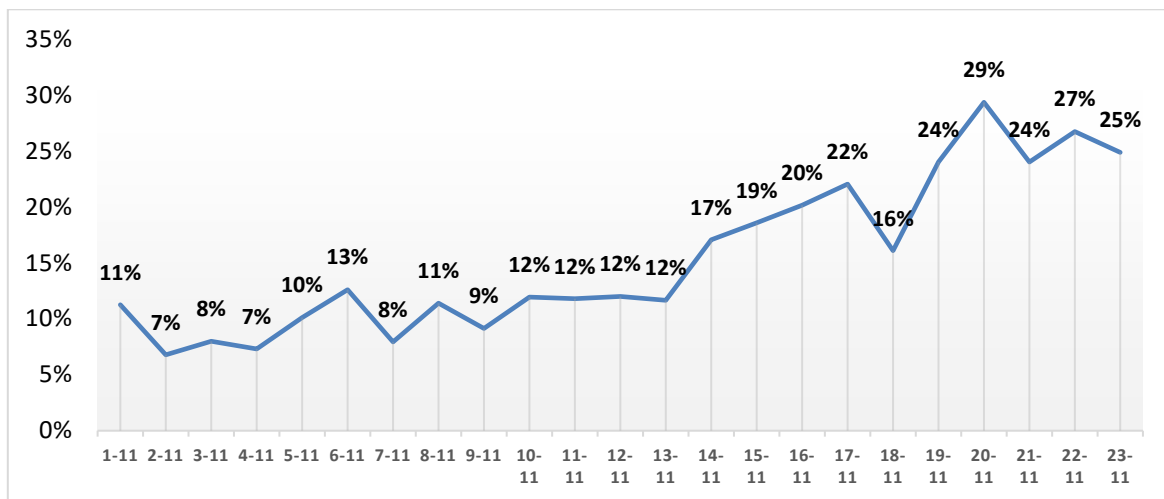


### III. Daily number of new cases within the community



Graph (2) shows number of new cases per day within the community

### IV. The percentage of positive tests of the daily samples



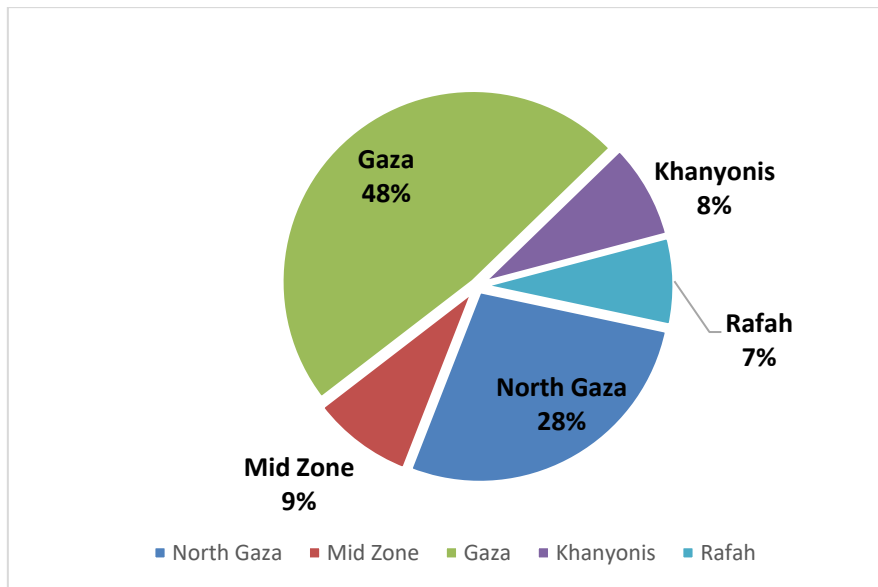
Graph (3) shows percentage of positive tests of the examined samples per day

### V. Incidence of cases by governorate

Governorate	Cases	Population	Incidence rate per 100,000
North Gaza	4454	416,906	1068
Gaza	7777	690,111	1127
Mid zone	1395	325,884	428
Khanyonis	1314	413,727	318
Rafah	1202	260,117	462
Gaza strip	16142	2,106,745	766

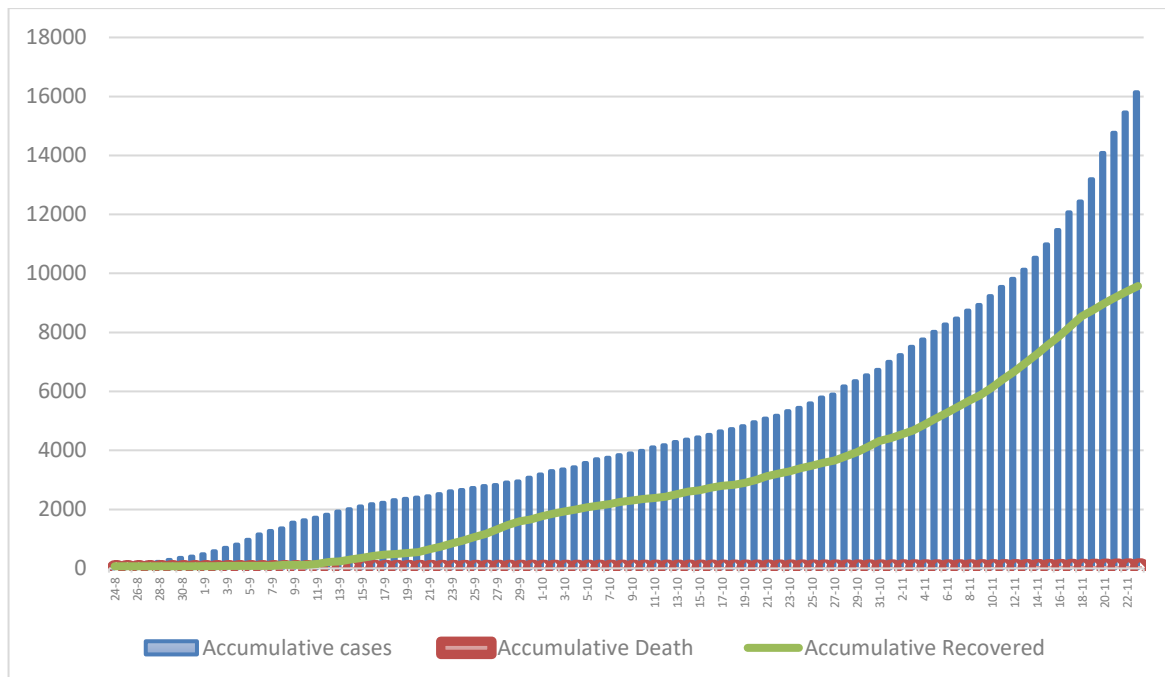


**VI. Geographical distribution of confirmed cases within the community**



Graph (4) shows geographical distribution of cases within the community per governorate.

**VII. Cumulative number of cases, recovered, deaths**



Graph (5) shows Cumulative number of cases, recovered, deaths.