



Date November 28, 2020

10:00AM  
Last 24 Hr.

### Daily Report for COVID 19 Virus

Situation report about Covid 19 epidemiological, presented the daily detected cases.

#### Summary of the epidemiological situation

Table (1) shows the numbers of cases

	Samples	Confirmed	Recovered	Deaths	Active
Today	2926	827	280	4	8536
Total	186534 *	19160	10534	90	

\*Since the break out of covid-19 within community

Closed Cases		
Worldwide	Gaza Strip	
40,153,283 (97%)	10,534 (99%)	Recovered
1,378,708 (3%)	90 (1%)	Deaths
41,531,991	10,624	Total Closed
Active Cases		
19,548,310	8536	Number



## Local reported cases within community – Emergency level (D)

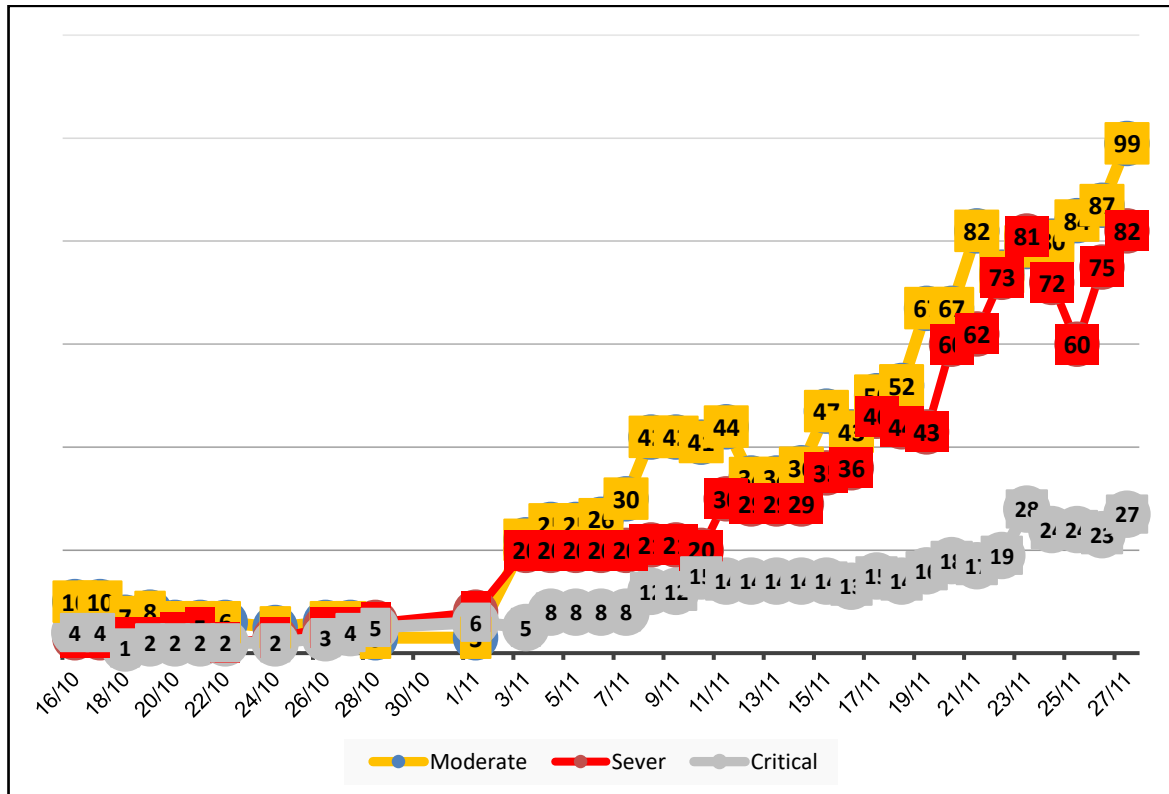
• The total number of confirmed cases is 18886, of which 8499 are still active cases receive medical care in hospitals and isolation centers, 10298 cases fully recovered and were discharged, while the number of deaths reached 89 deaths.

### I. Classification of active cases according to severity

Table (2) shows the classification of cases according to the degree of severity

Total	Other	Critical	Sever	Moderate	Mild	Classification
8536	126	27	82	99	8202	Total
100%	1.5%	0.3%	1.0%	1.2%	96.1%	Percent

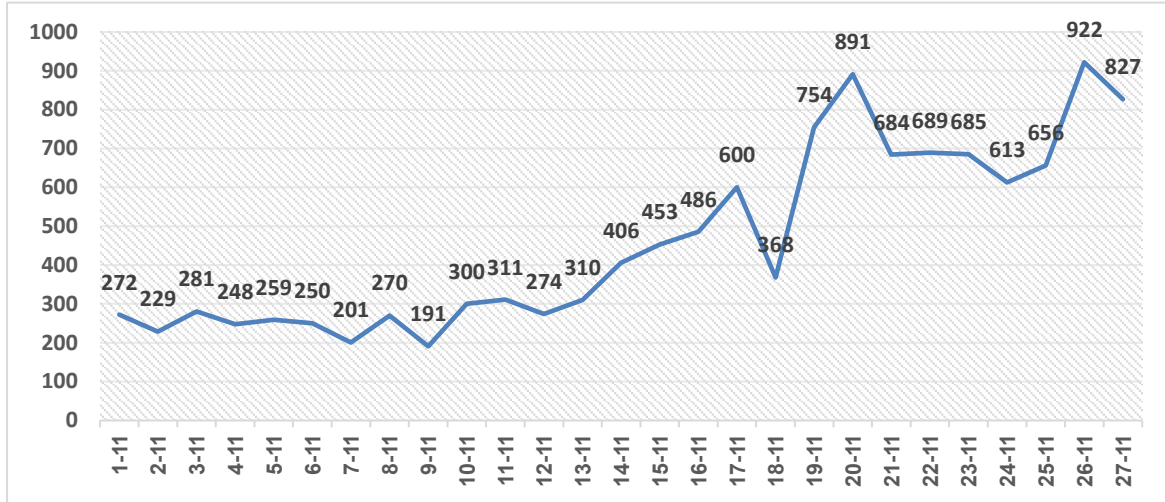
### II. Daily classification of active cases according to severity



Graph (1) Shows the daily classification of cases according to degree of severity

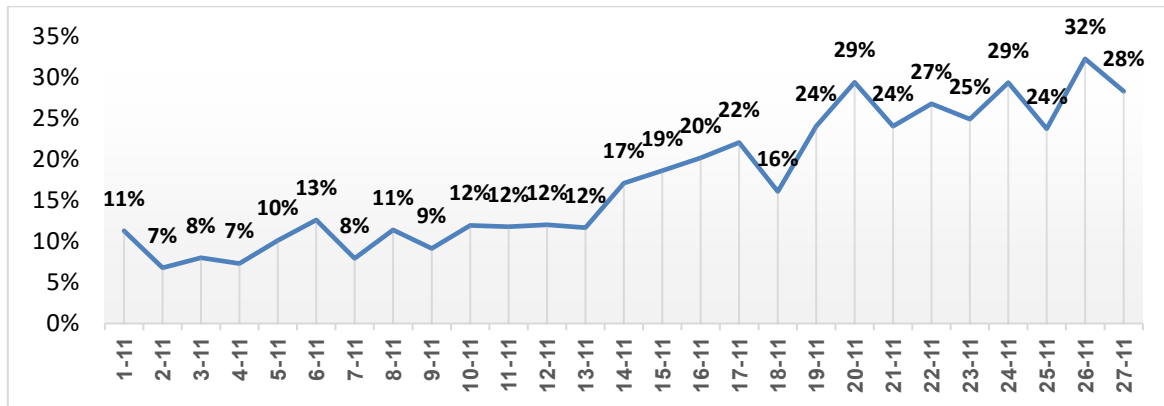


### III. Daily number of new cases within the community



Graph (2) shows number of new cases per day within the community

### IV. The percentage of positive tests of the daily samples



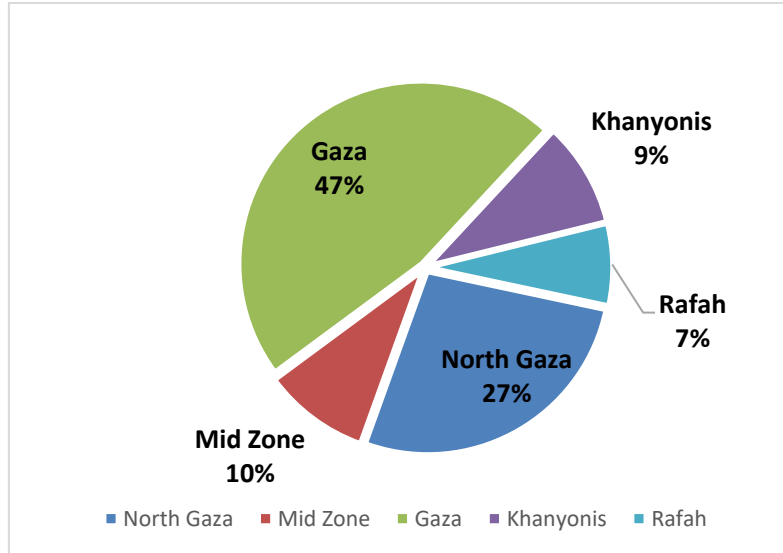
Graph (3) shows percentage of positive tests of the examined samples per day

### V. Incidence of cases by governorate

Governorate	Cases	Population	Incidence rate per 100,000
North Gaza	5205	416,906	1248
Gaza	9013	690,111	1306
Mid zone	1797	325,884	551
Khanyonis	1768	413,727	427
Rafah	1377	260,117	529
Gaza strip	19160	2,106,745	909

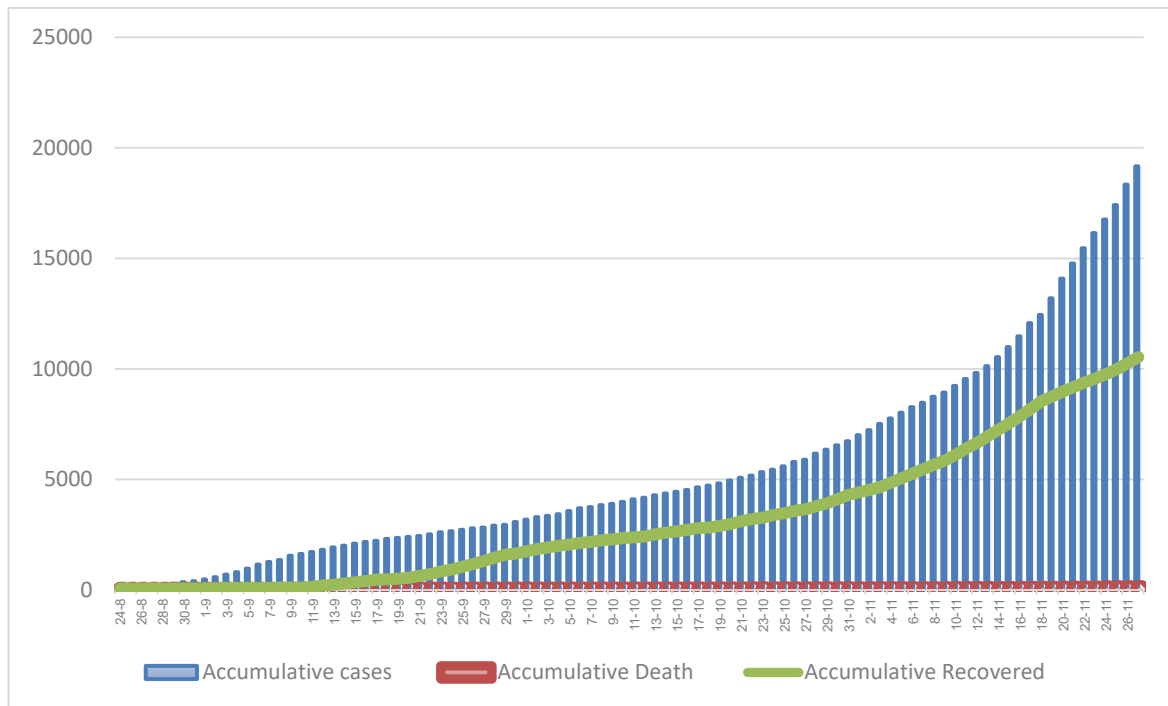


**VI. Geographical distribution of confirmed cases within the community**



Graph (4) shows geographical distribution of cases within the community per governorate.

**VII. Cumulative number of cases, recovered, deaths**



Graph (5) shows Cumulative number of cases, recovered, deaths.