



Date 30-Nov-2020

10:00AM
Last 24 Hr.

Daily Report for COVID 19 Virus

Situation report about Covid 19 epidemiological, presented the daily detected cases.

Summary of the epidemiological situation

Table (1) shows the numbers of cases

	Samples	Confirmed	Recovered	Deaths	Active
Today	2484	450	748	5	9226
Total	191607 *	20646	11318	102	

*Since the break out of covid-19 within community

Closed Cases		
Worldwide	Gaza Strip	
40,153,283 (97%)	11,318 (99%)	Recovered
1,378,708 (3%)	102 (1%)	Deaths
41,531,991	11,420	Total Closed
Active Cases		
19,548,310	9226	Number



Local reported cases within community – Emergency level (D)

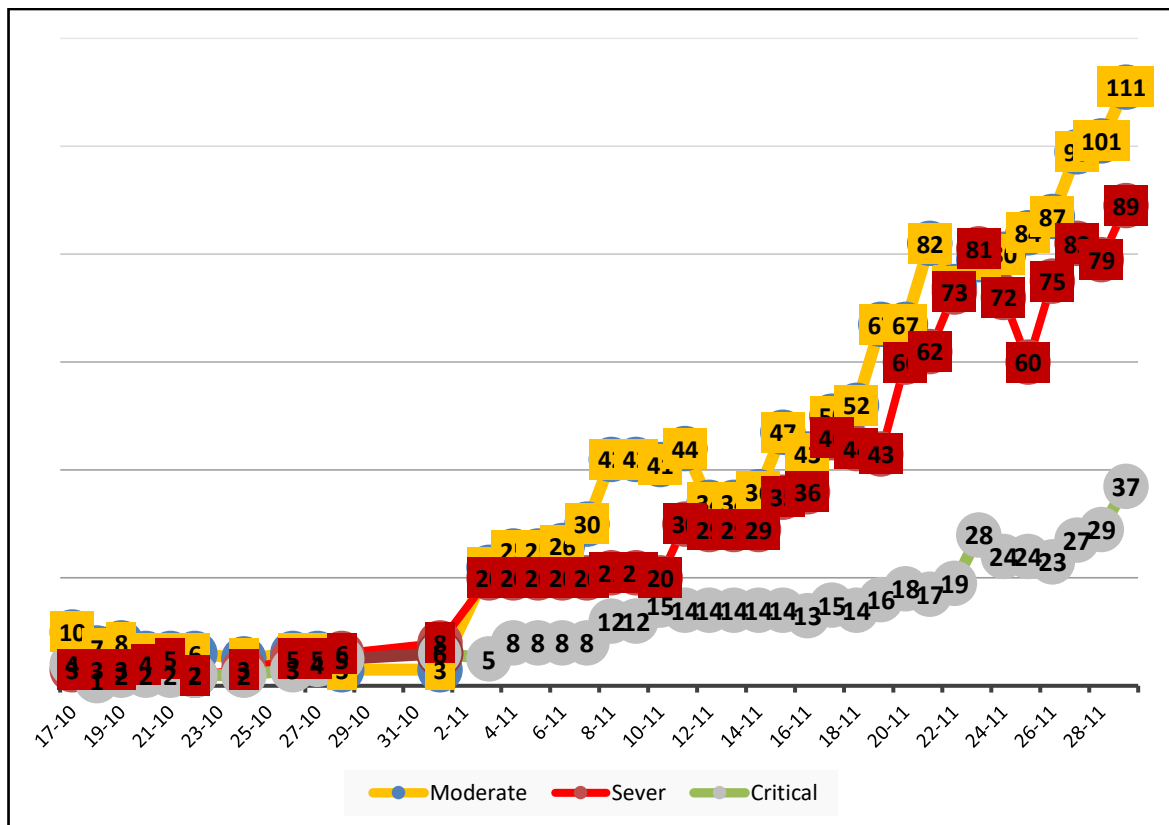
• The total number of confirmed cases is 20370, of which 9188 are still active cases receive medical care in hospitals and isolation centers, 11081 cases fully recovered and were discharged, while the number of deaths reached 101 deaths.

I. Classification of active cases according to severity

Table (2) shows the classification of cases according to the degree of severity

Total	Other	Critical	Sever	Moderate	Mild	Classification
9226	109	37	89	111	8880	Total
100%	1.2%	0.4%	1.0%	1.2%	96.2%	Percent

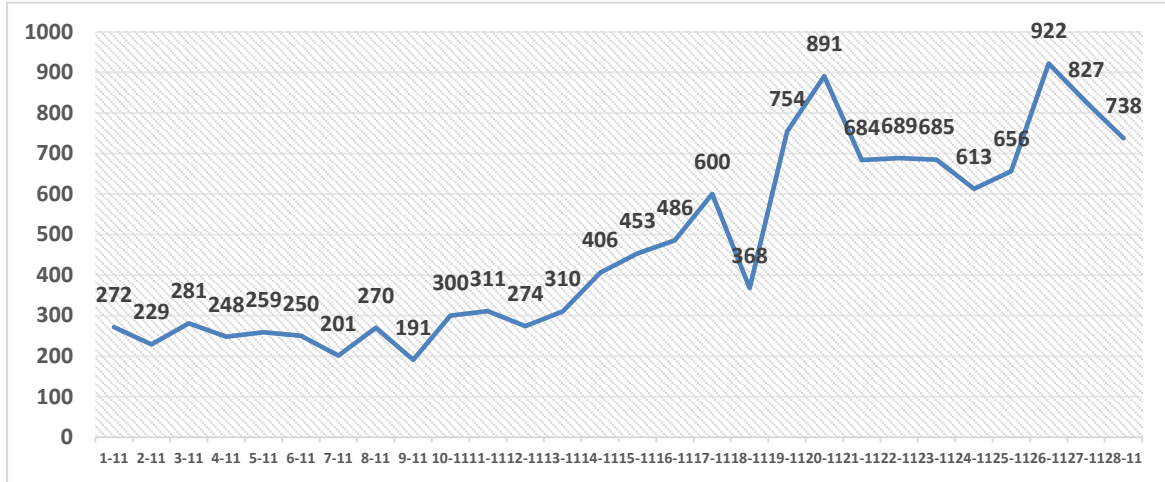
II. Daily classification of active cases according to severity



Graph (1) Shows the daily classification of cases according to degree of severity

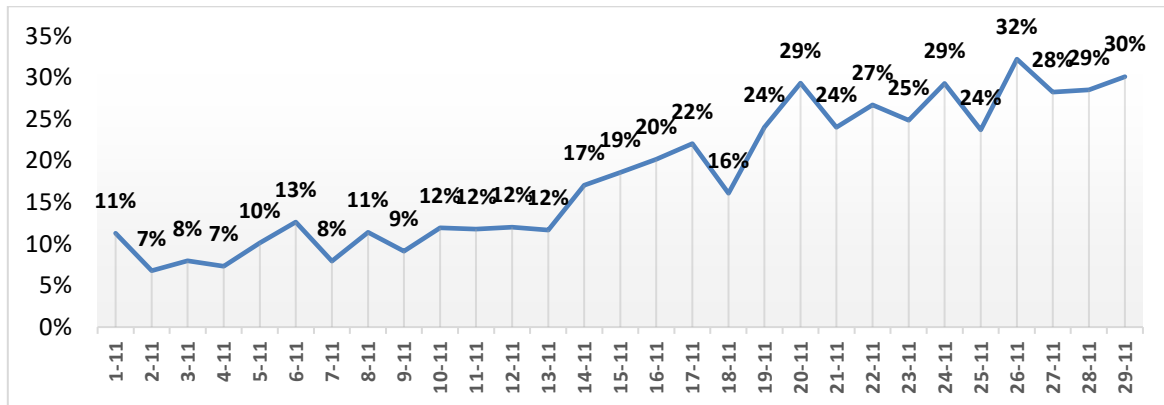


III. Daily number of new cases within the community



Graph (2) shows number of new cases per day within the community

IV. The percentage of positive tests of the daily samples



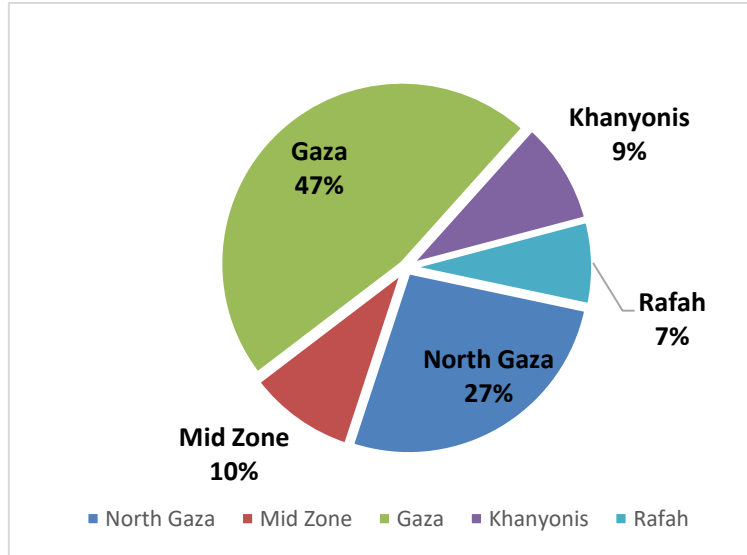
Graph (3) shows percentage of positive tests of the examined samples per day

V. Incidence of cases by governorate

Governorate	Cases	Population	Incidence rate per 100,000
North Gaza	5516	416,906	1323
Gaza	9703	690,111	1406
Mid zone	1980	325,884	608
Khanyonis	1908	413,727	461
Rafah	1539	260,117	592
Gaza strip	20646	2,106,745	980

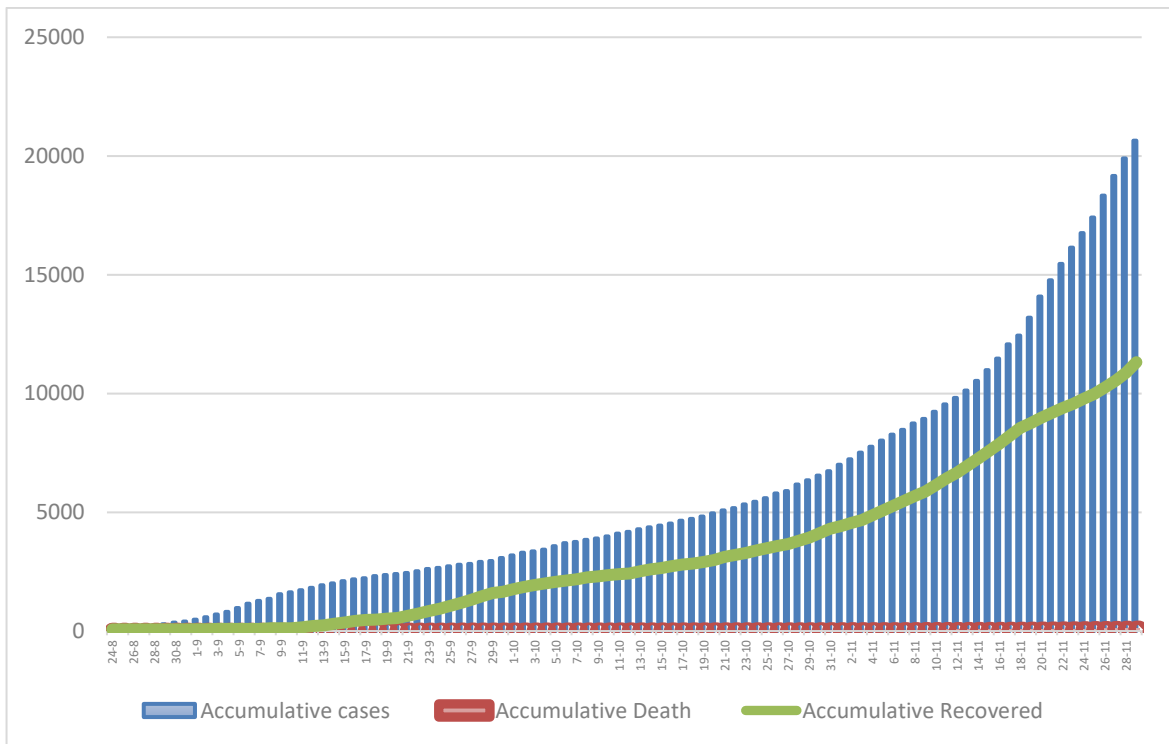


VI. Geographical distribution of confirmed cases within the community



Graph (4) shows geographical distribution of cases within the community per governorate.

VII. Cumulative number of cases, recovered, deaths



Graph (5) shows Cumulative number of cases, recovered, deaths.