



Date: 01,01, 2021

10:00AM  
Last 24 Hr.

## Daily Report for COVID 19 Virus

Situation report about Covid 19 epidemiological, presented the daily detected cases.

### Summary of the epidemiological situation

Table (1) shows the numbers of cases

	Samples	Confirmed	Recovered	Deaths	Active
Today	2224	689	881	4	9683
Total	255792	41264	31206	375	

Closed Cases		
Worldwide	Gaza Strip	
46,384,053 (96.3%)	31206 (99%)	Recovered
1,804,138 (3.7%)	375 (1%)	Deaths
48,488,191	31581	Total Closed
Active Cases		
21,522,337	9683	Number



## Local reported cases within community – Emergency level (D)

- The total number of confirmed cases is 40968, of which 9681 are still active cases, 30913 cases fully recovered and were discharged, while the number of deaths reached 374 deaths.

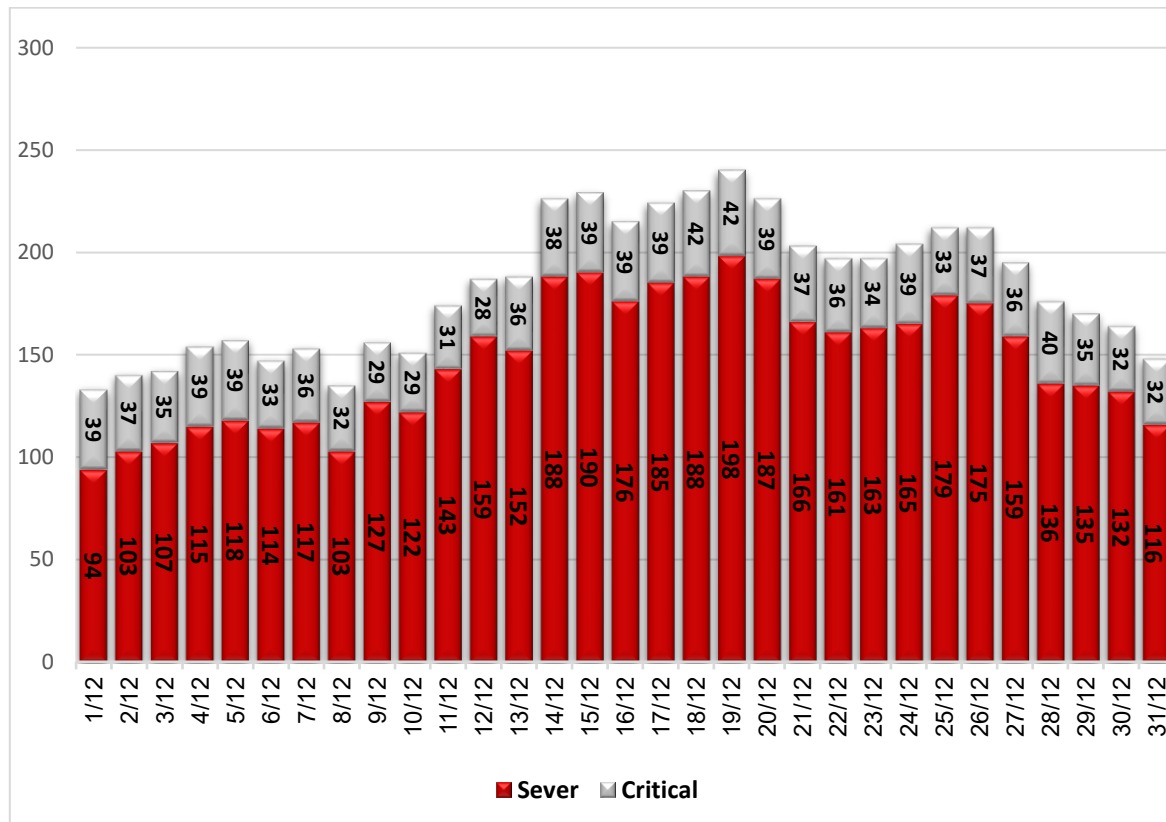
### I. Classification of active cases according to severity

Table (2) shows the classification of cases according to the degree of severity

Total	In Patient				Mild	Classification
	Other	Critical	Sever	Moderate		
9683	51	32	116	53	9431	Total
100%	0.5%	0.3%	1.2%	0.5%	97.4%	Percent

\*Cases needing medical care for reasons other than the corona

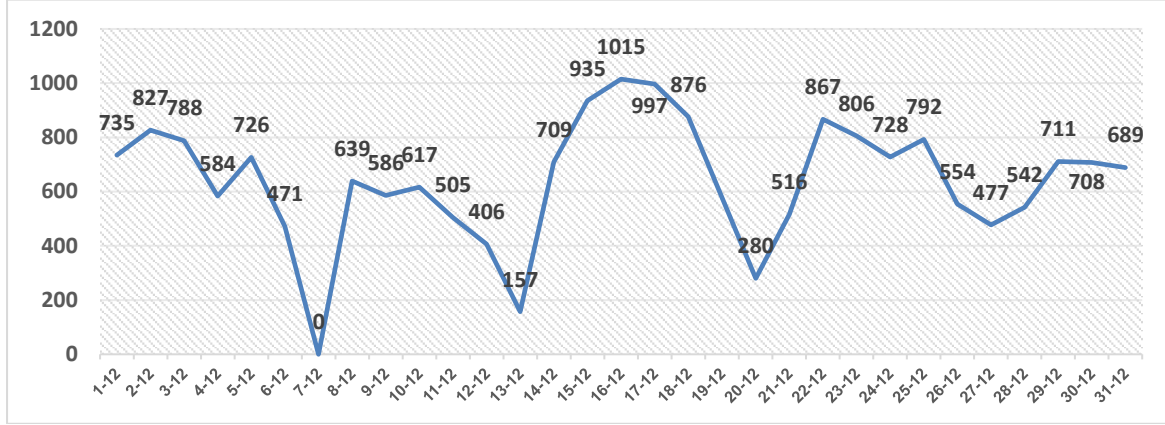
### II. Daily classification of active cases according to severity



Graph (1) Shows the daily classification of cases according to degree of severity

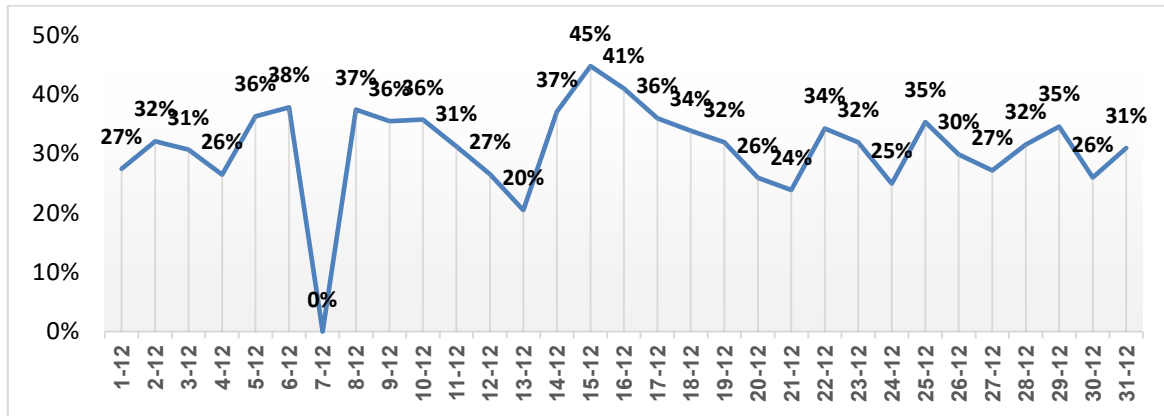


### III. Daily number of new cases.



Graph (2) shows number of new cases per day within the community

### IV. The percentage of positive tests of the daily samples



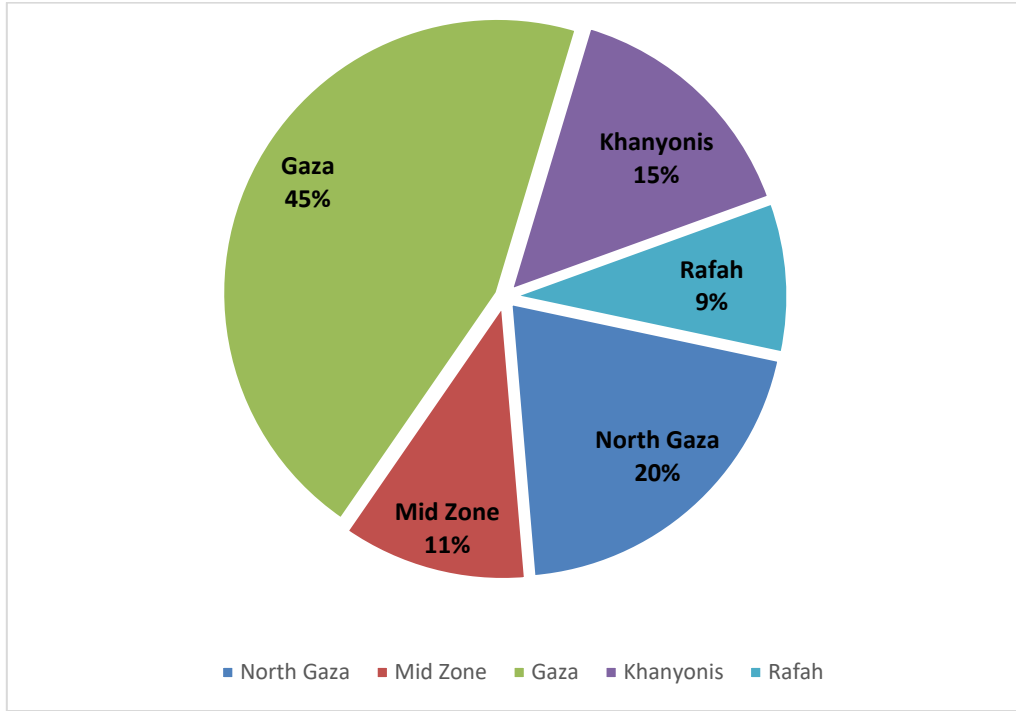
Graph (3) shows percentage of positive tests of the examined samples per day

### V. Incidence of cases by governorate

Governorate	Cases	Population	Incidence rate per 100,000
North Gaza	8358	416,906	2005
Gaza	18504	690,111	2681
Mid zone	4569	325,884	1402
Khanyonis	6178	413,727	1493
Rafah	3655	260,117	1405
Gaza strip	41264	2,106,745	1959

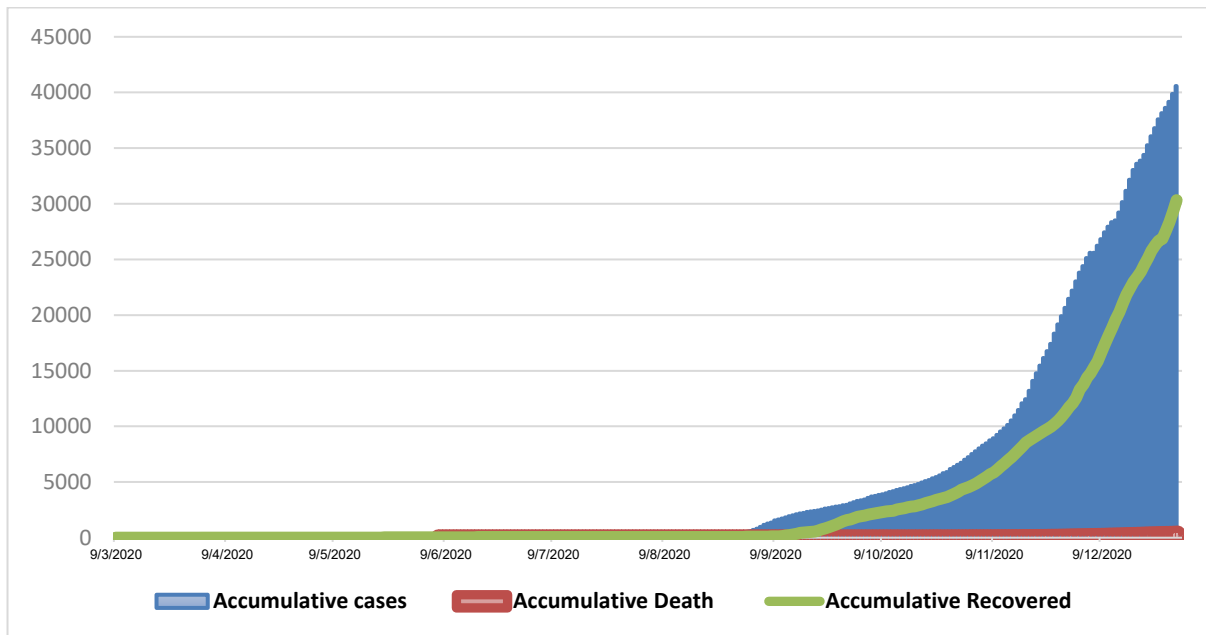


VI. Geographical distribution of confirmed cases.



Graph (4) shows geographical distribution of cases per governorate.

VII. Cumulative number of cases, recovered, deaths



Graph (5) shows Cumulative number of cases, recovered, deaths.