



Date: 06,01, 2021

10:00AM  
Last 24 Hr.

## Daily Report for COVID 19 Virus

Situation report about Covid 19 epidemiological, presented the daily detected cases.

### Summary of the epidemiological situation

Table (1) shows the numbers of cases

	Samples	Confirmed	Recovered	Deaths	Active
Today	2436	610	805	5	9108
Total	266009	43744	34227	404	

Closed Cases		
Worldwide	Gaza Strip	
46,384,053 (96.3%)	34227 (99%)	Recovered
1,804,138 (3.7%)	409 (1%)	Deaths
48,488,191	34636	Total Closed
Active Cases		
21,522,337	9108	Number



## Local reported cases within community – Emergency level (D)

- The total number of confirmed cases is 43445, of which 9103 are still active cases, 33934 cases fully recovered and were discharged, while the number of deaths reached 408 deaths.

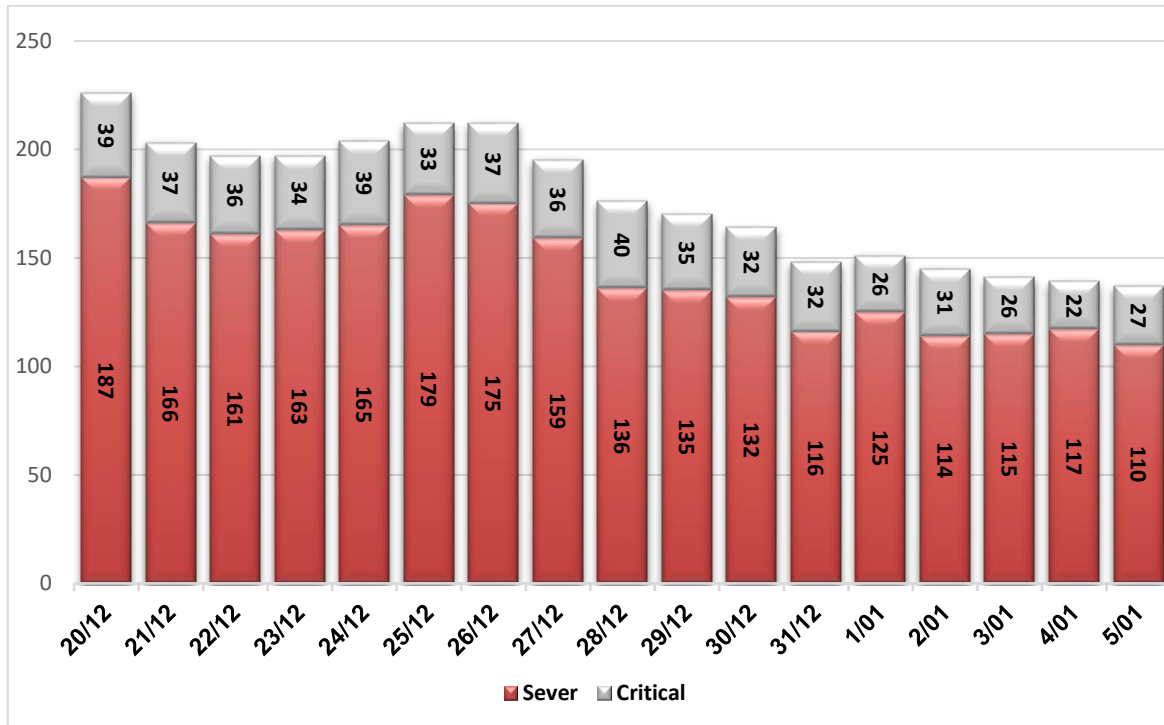
### I. Classification of active cases according to severity

Table (2) shows the classification of cases according to the degree of severity

Total	In Patient				Mild	Classification
	Other	Critical	Sever	Moderate		
9108	64	27	110	46	8861	Total
100%	0.7%	0.3%	1.2%	0.5%	97.3%	Percent

\*Cases needing medical care for reasons other than the corona

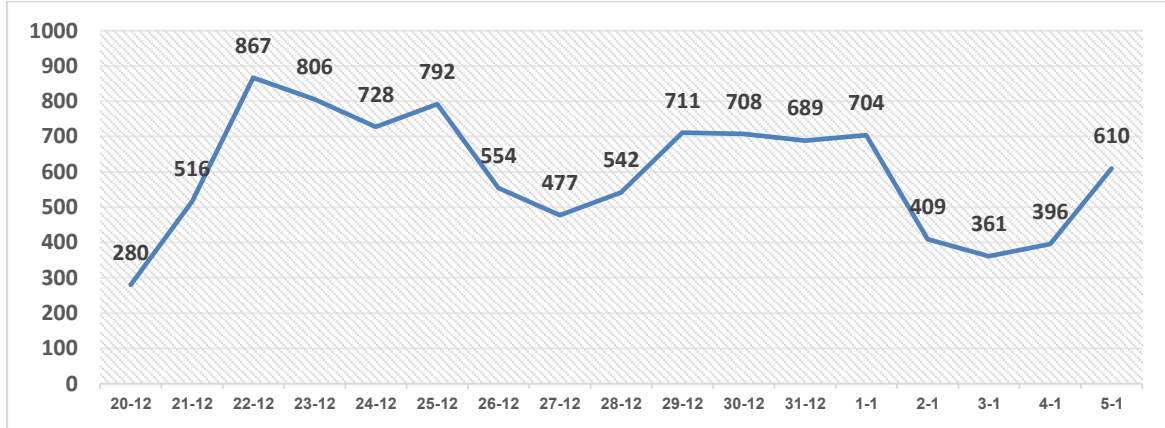
### II. Daily classification of active cases according to severity



Graph (1) Shows the daily classification of cases according to degree of severity

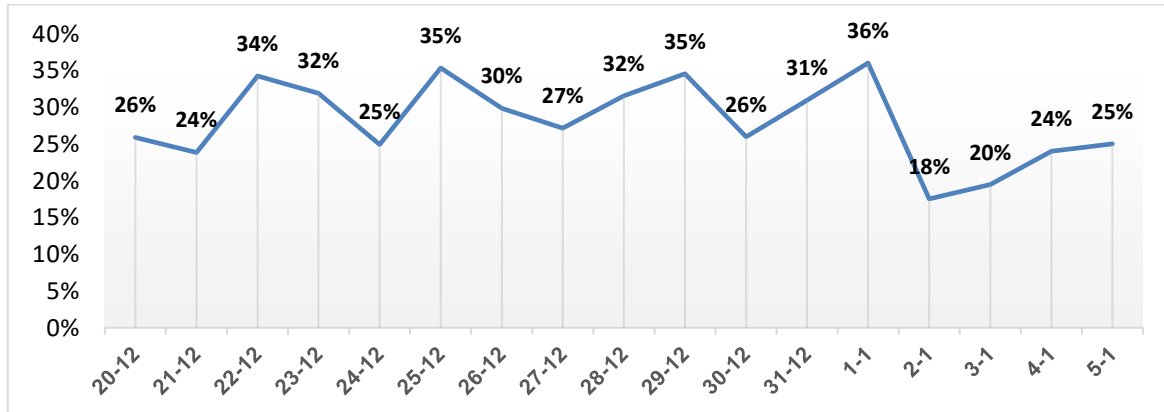


### III. Daily number of new cases.



Graph (2) shows number of new cases per day within the community

### IV. The percentage of positive tests of the daily samples



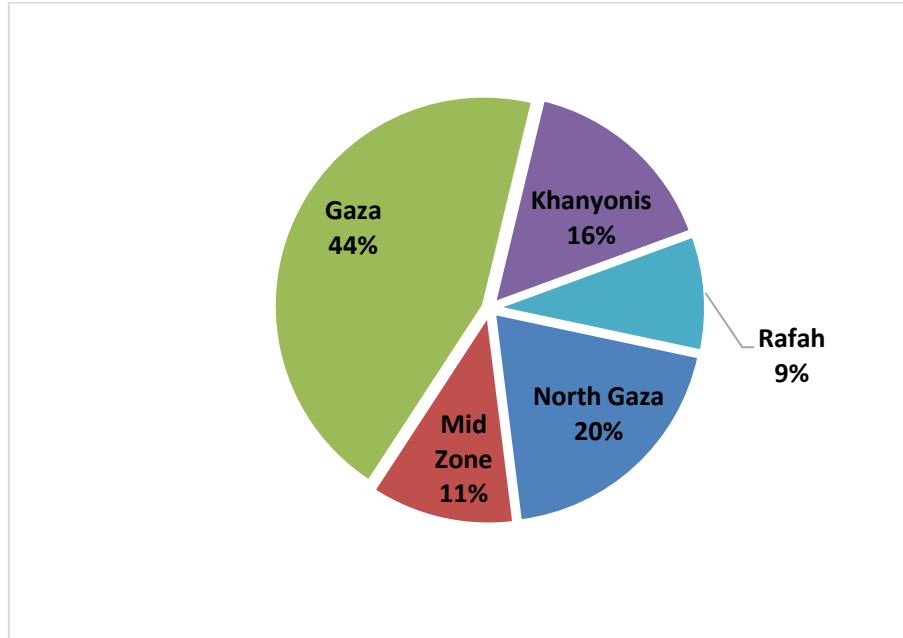
Graph (3) shows percentage of positive tests of the examined samples per day

### V. Incidence of cases by governorate

Governorate	Cases	Population	Incidence rate per 100,000
North Gaza	8612	416,906	2066
Gaza	19487	690,111	2824
Mid zone	4895	325,884	1502
Khanyonis	6846	413,727	1655
Rafah	3904	260,117	1501
Gaza strip	43744	2,106,745	2076

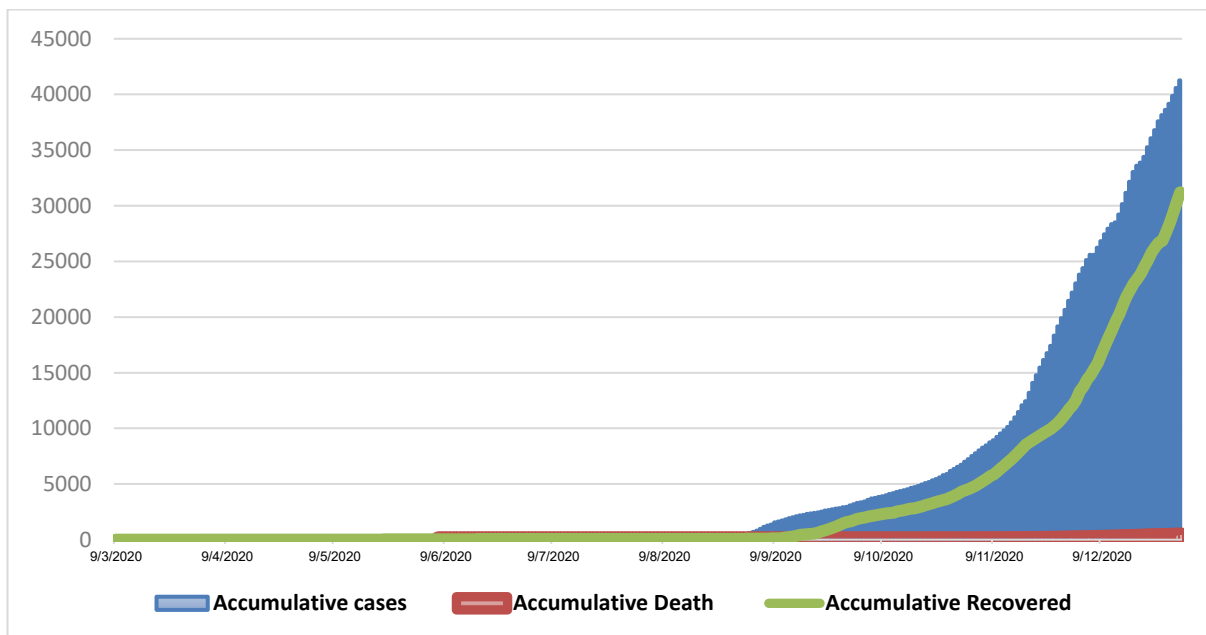


## VI. Geographical distribution of confirmed cases.



Graph (4) shows geographical distribution of cases per governorate.

## VII. Cumulative number of cases, recovered, deaths



Graph (5) shows Cumulative number of cases, recovered, deaths.