



Date December 6, 2020

10:00AM
Last 24 Hr.

Daily Report for COVID 19 Virus

Situation report about Covid 19 epidemiological, presented the daily detected cases.

Summary of the epidemiological situation

Table (1) shows the numbers of cases

	Samples	Confirmed	Recovered	Deaths	Active
Today	2000	726	623	5	10591
Total	206207 *	25121	14391	139	

*Since the break out of covid-19 within community

Closed Cases		
Worldwide	Gaza Strip	
41,492,849 (97%)	14391 (99%)	Recovered
1,492,989 (3%)	139 (1%)	Deaths
42,985,838	14,530	Total Closed
Active Cases		
21,522,337	10591	Number



Local reported cases within community – Emergency level (D)

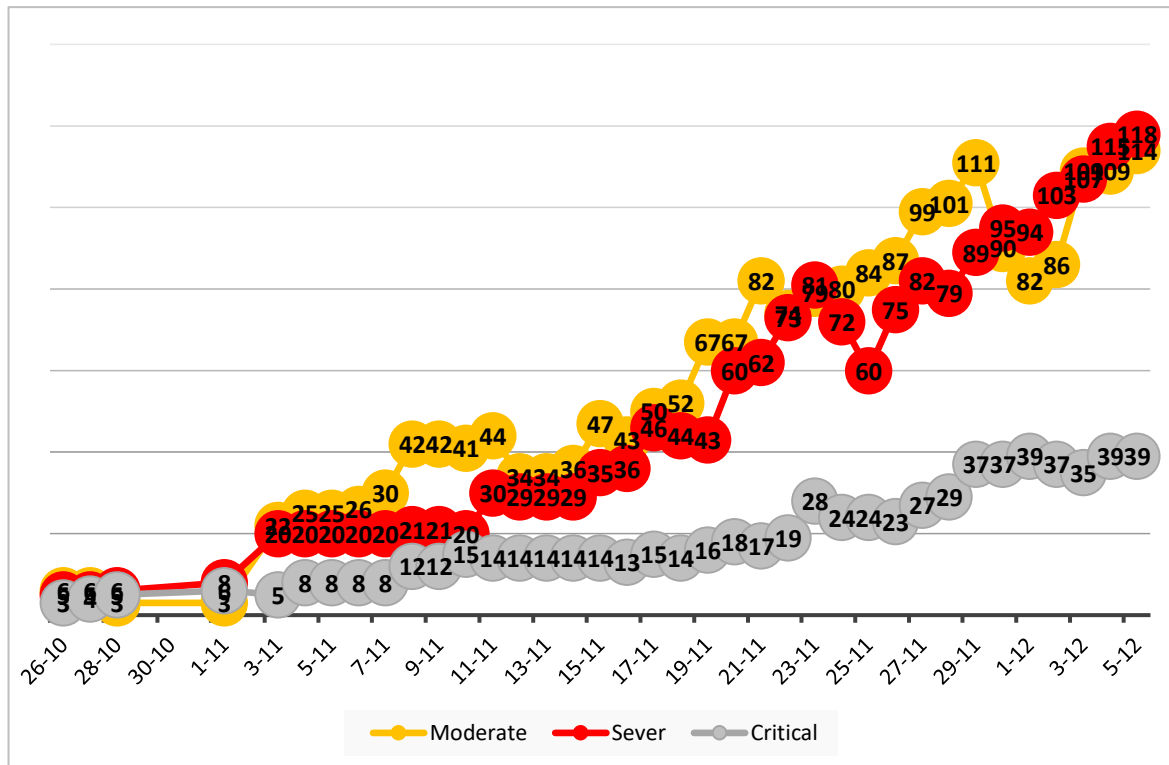
• The total number of confirmed cases is 24836, of which 10548 are still active cases receive medical care in hospitals and isolation centers, 14150 cases fully recovered and were discharged, while the number of deaths reached 138 deaths.

I. Classification of active cases according to severity

Table (2) shows the classification of cases according to the degree of severity

Total	Other	Critical	Sever	Moderate	Mild	Classification
10591	104	39	118	114	10216	Total
100%	1.0%	0.4%	1.1%	1.0%	96.5%	Percent

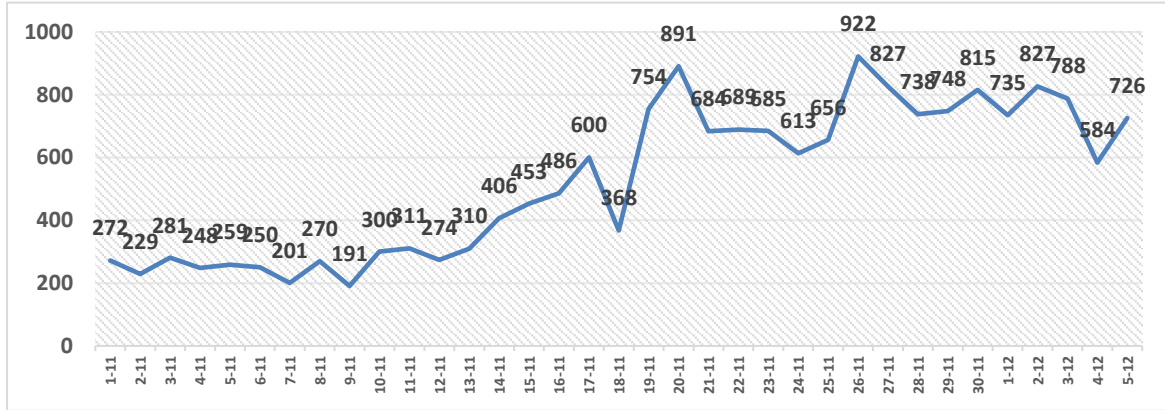
II. Daily classification of active cases according to severity



Graph (1) Shows the daily classification of cases according to degree of severity

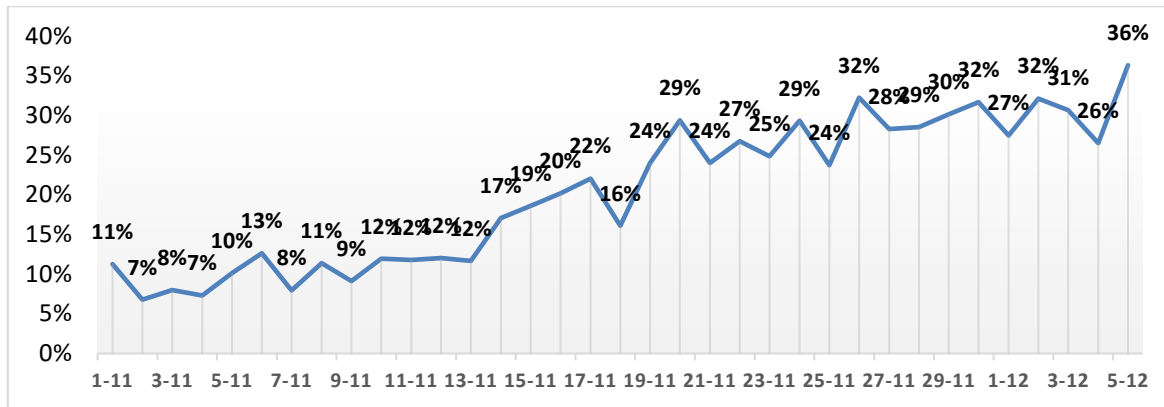


III. Daily number of new cases within the community



Graph (2) shows number of new cases per day within the community

IV. The percentage of positive tests of the daily samples

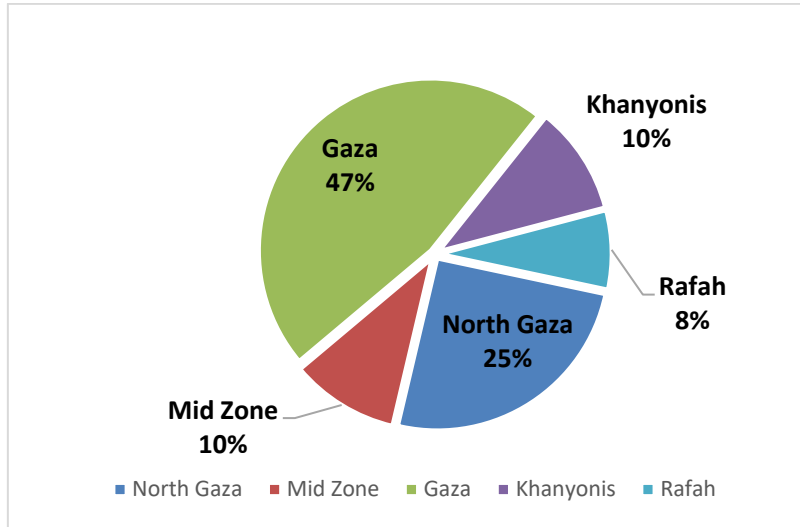


Graph (3) shows percentage of positive tests of the examined samples per day

V. Incidence of cases by governorate

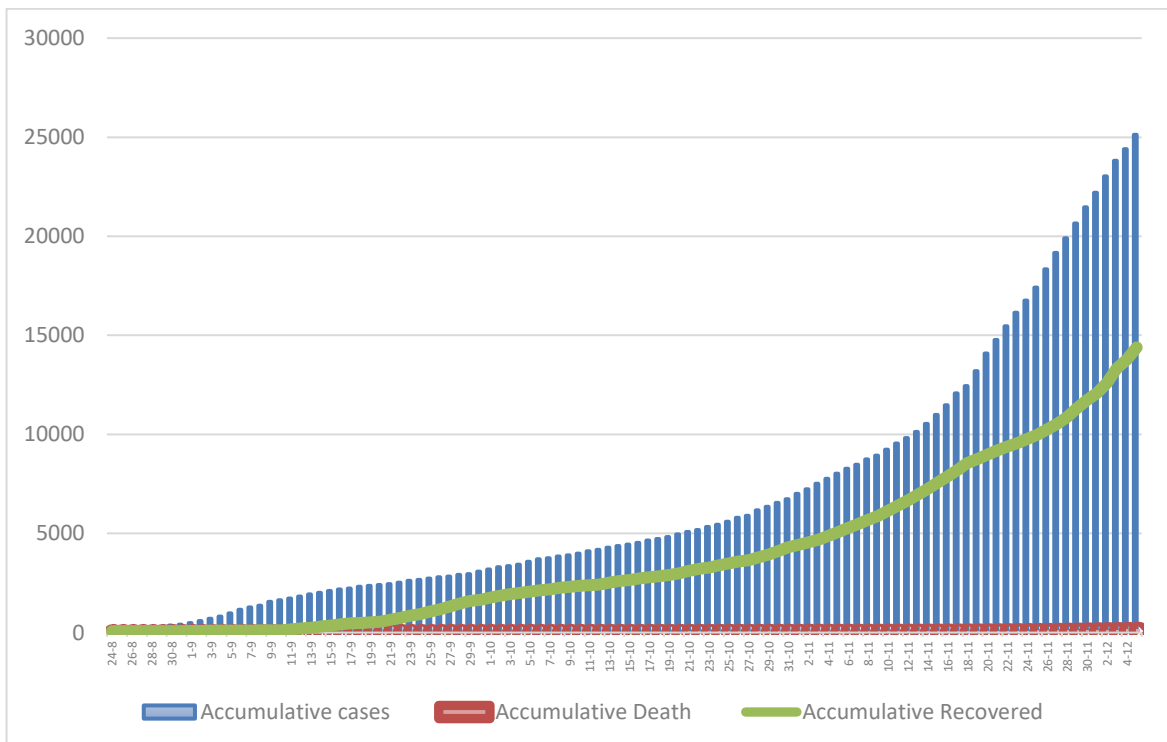
Governorate	Cases	Population	Incidence rate per 100,000
North Gaza	6334	416,906	1519
Gaza	11723	690,111	1699
Mid zone	2549	325,884	782
Khanyonis	2624	413,727	634
Rafah	1891	260,117	727
Gaza strip	25121	2,106,745	1192

VI. Geographical distribution of confirmed cases within the community



Graph (4) shows geographical distribution of cases within the community per governorate.

VII. Cumulative number of cases, recovered, deaths



Graph (5) shows Cumulative number of cases, recovered, deaths.