



Date December 7, 2020

10:00AM  
Last 24 Hr.

## Daily Report for COVID 19 Virus

Situation report about Covid 19 epidemiological, presented the daily detected cases.

### Summary of the epidemiological situation

Table (1) shows the numbers of cases

	Samples	Confirmed	Recovered	Deaths	Active
Today	1245	471	405	10	10647
Total	207452 *	25592	14796	149	

\*Since the break out of covid-19 within community

Closed Cases		
Worldwide	Gaza Strip	
41,492,849 (97%)	14796 (99%)	Recovered
1,492,989 (3%)	149 (1%)	Deaths
42,985,838	14,945	Total Closed
Active Cases		
21,522,337	10647	Number



## Local reported cases within community – Emergency level (D)

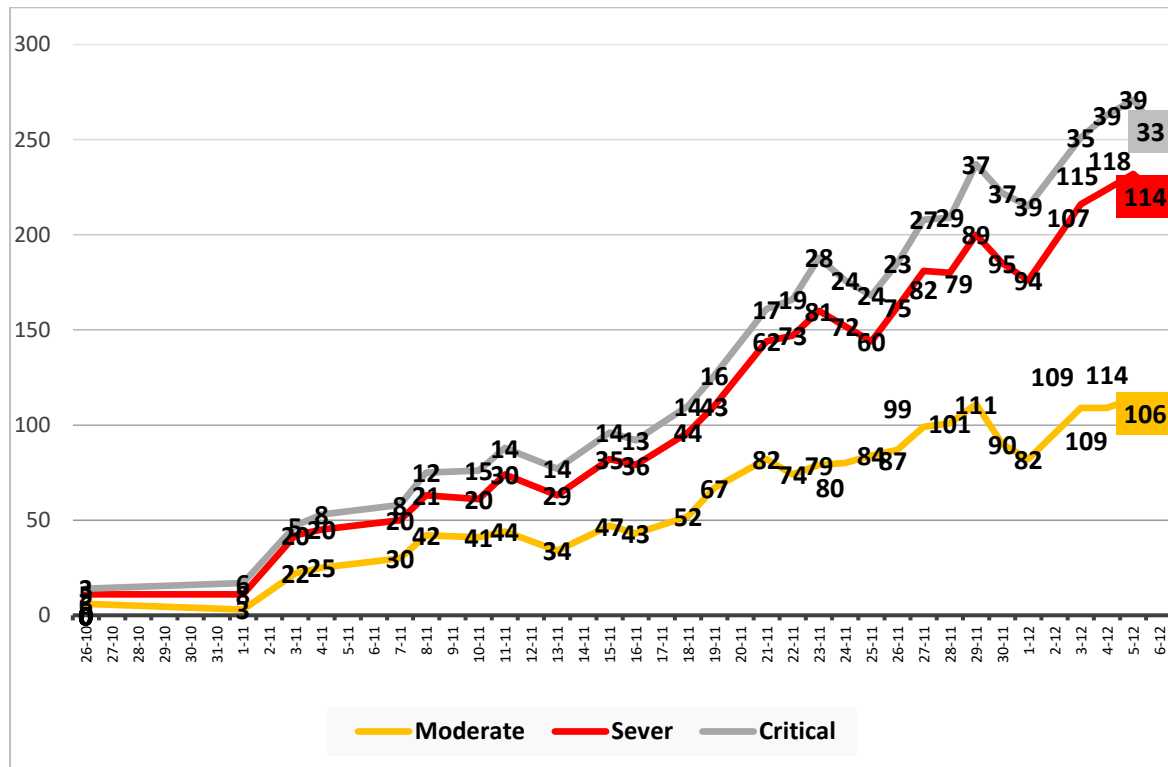
• The total number of confirmed cases is 25307, of which 10604 are still active cases receive medical care in hospitals and isolation centers, 14555 cases fully recovered and were discharged, while the number of deaths reached 148 deaths.

### I. Classification of active cases according to severity

Table (2) shows the classification of cases according to the degree of severity

Total	Other	Critical	Sever	Moderate	Mild	Classification
10647	97	33	114	106	10297	Total
100%	0.9%	0.3%	1.1%	1.0%	96.7%	Percent

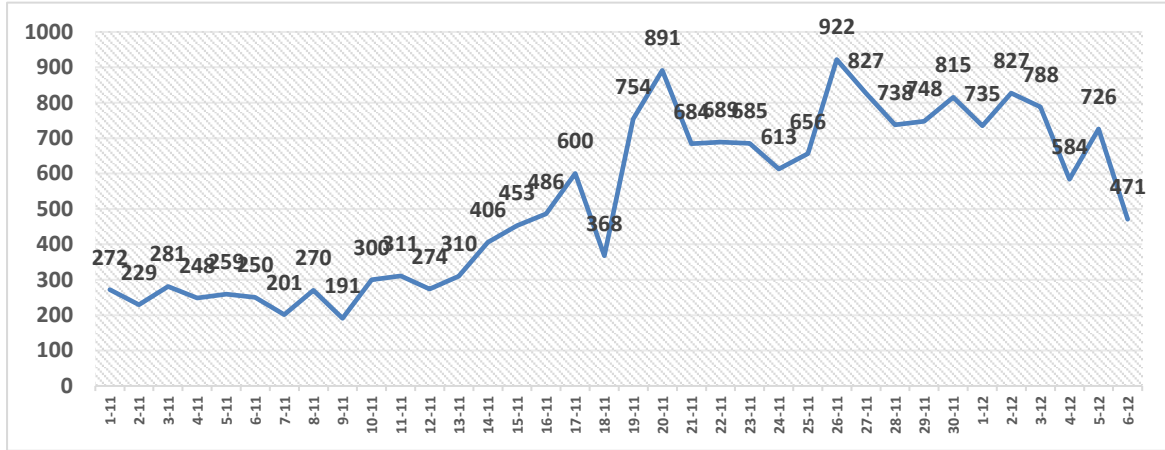
### II. Daily classification of active cases according to severity



Graph (1) Shows the daily classification of cases according to degree of severity

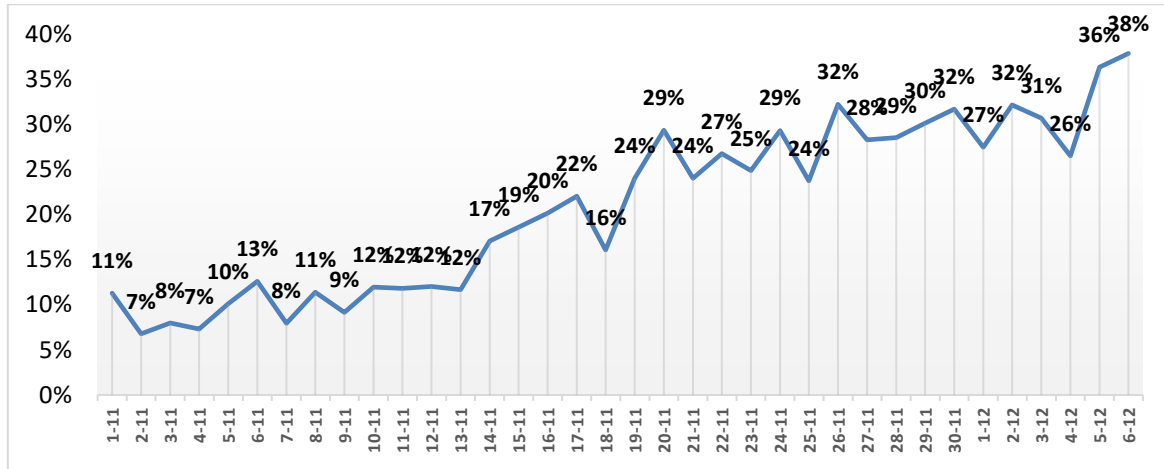


### III. Daily number of new cases within the community



Graph (2) shows number of new cases per day within the community

### IV. The percentage of positive tests of the daily samples



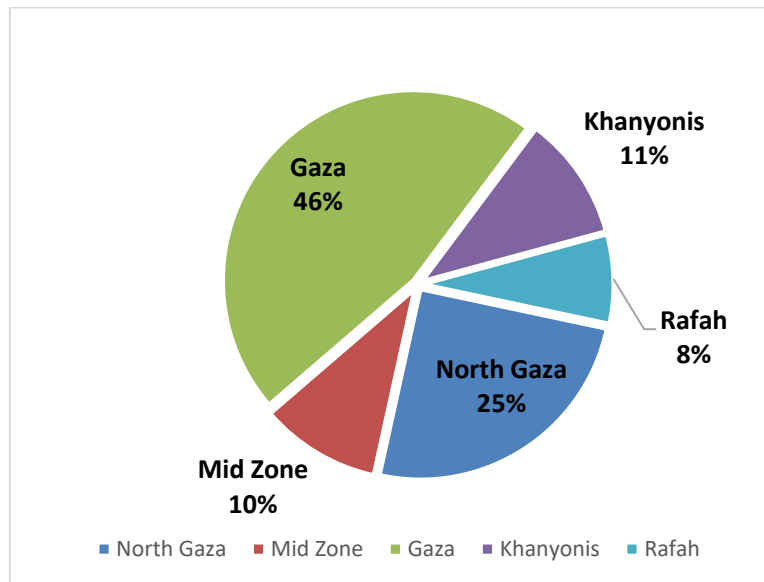
Graph (3) shows percentage of positive tests of the examined samples per day

### V. Incidence of cases by governorate

Governorate	Cases	Population	Incidence rate per 100,000
North Gaza	6427	416,906	1542
Gaza	11907	690,111	1725
Mid zone	2620	325,884	804
Khanyonis	2704	413,727	654
Rafah	1934	260,117	744
Gaza strip	25592	2,106,745	1215

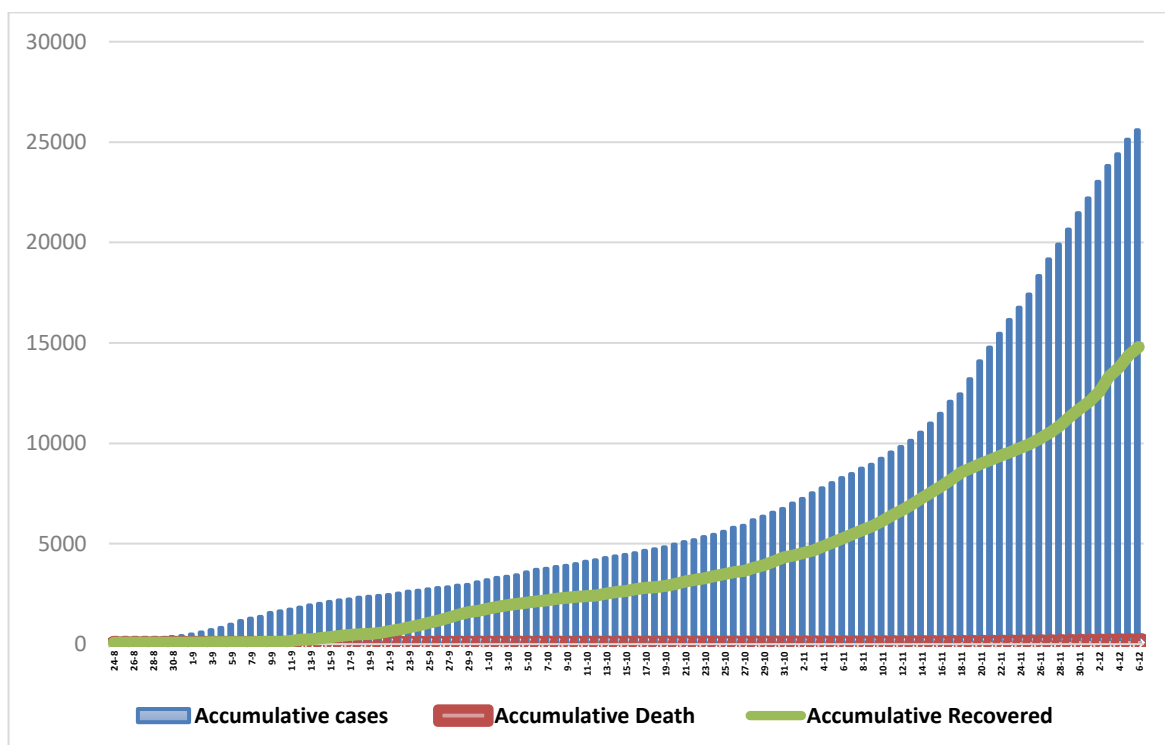


**VI. Geographical distribution of confirmed cases within the community**



Graph (4) shows geographical distribution of cases within the community per governorate.

**VII. Cumulative number of cases, recovered, deaths**



Graph (5) shows Cumulative number of cases, recovered, deaths.