



Date: December 9, 2020

10:00AM  
Last 24 Hr.

## Daily Report for COVID 19 Virus

Situation report about Covid 19 epidemiological, presented the daily detected cases.

### Summary of the epidemiological situation

Table (1) shows the numbers of cases

	Samples	Confirmed	Recovered	Deaths	Active
Today	1708	639	517	7	10206
Total	209160	26231	15863	162	

Closed Cases		
Worldwide	Gaza Strip	
41,492,849 (97%)	15863 (99%)	Recovered
1,492,989 (3%)	162 (1%)	Deaths
42,985,838	16,025	Total Closed
Active Cases		
21,522,337	10206	Number



## Local reported cases within community – Emergency level (D)

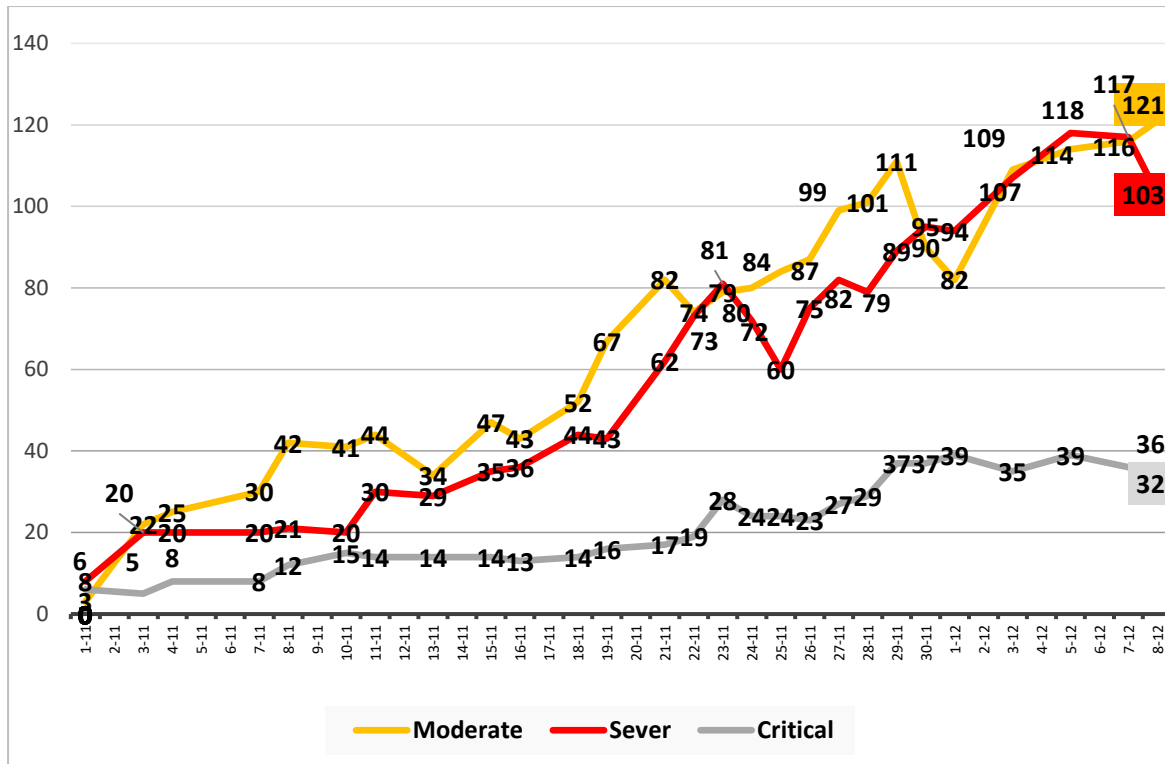
• The total number of confirmed cases is 25946, of which 10180 are still active cases receive medical care in hospitals and isolation centers, 15605 cases fully recovered and were discharged, while the number of deaths reached 161 deaths.

### I. Classification of active cases according to severity

Table (2) shows the classification of cases according to the degree of severity

Total	Other	Critical	Sever	Moderate	Mild	Classification
10206	74	32	103	121	9876	Total
100%	0.7%	0.3%	1.0%	1.2%	96.8%	Percent

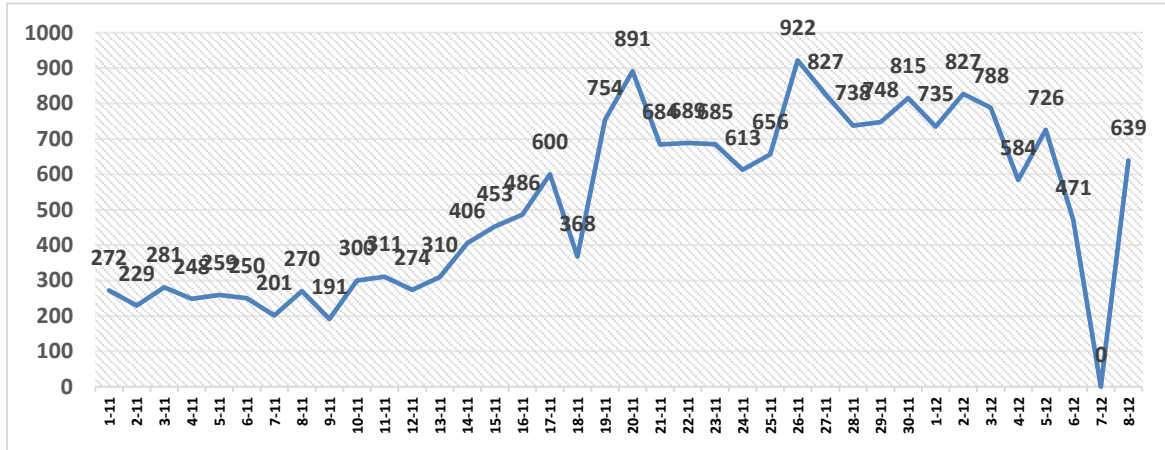
### II. Daily classification of active cases according to severity



Graph (1) Shows the daily classification of cases according to degree of severity

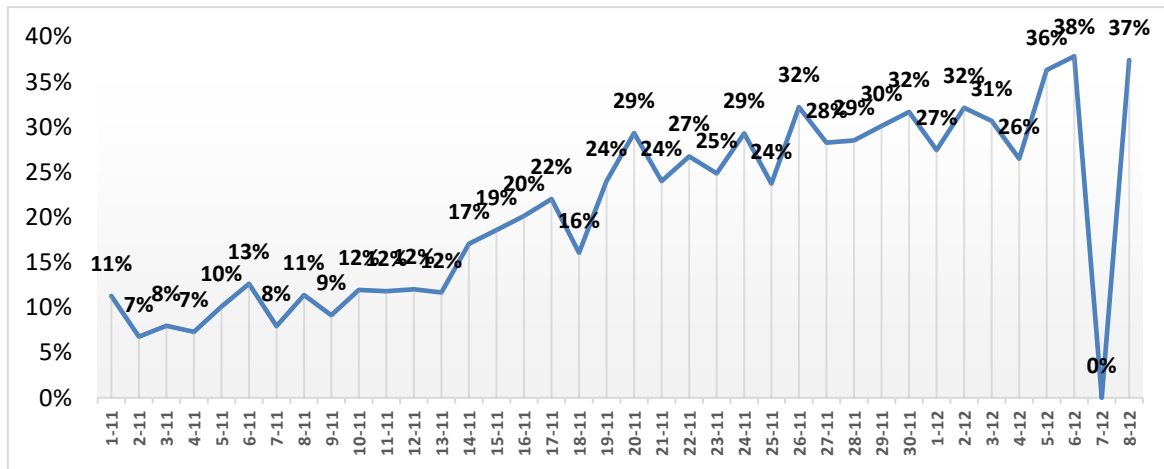


### III. Daily number of new cases within the community



Graph (2) shows number of new cases per day within the community

### IV. The percentage of positive tests of the daily samples



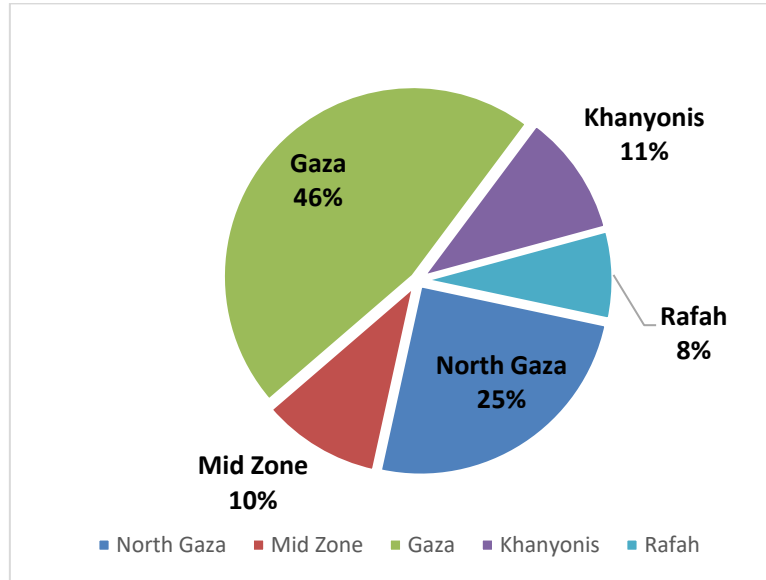
Graph (3) shows percentage of positive tests of the examined samples per day

### V. Incidence of cases by governorate

Governorate	Cases	Population	Incidence rate per 100,000
North Gaza	6521	416,906	1564
Gaza	12184	690,111	1766
Mid zone	2708	325,884	831
Khanyonis	2817	413,727	681
Rafah	2001	260,117	769
Gaza strip	26231	2,106,745	1245

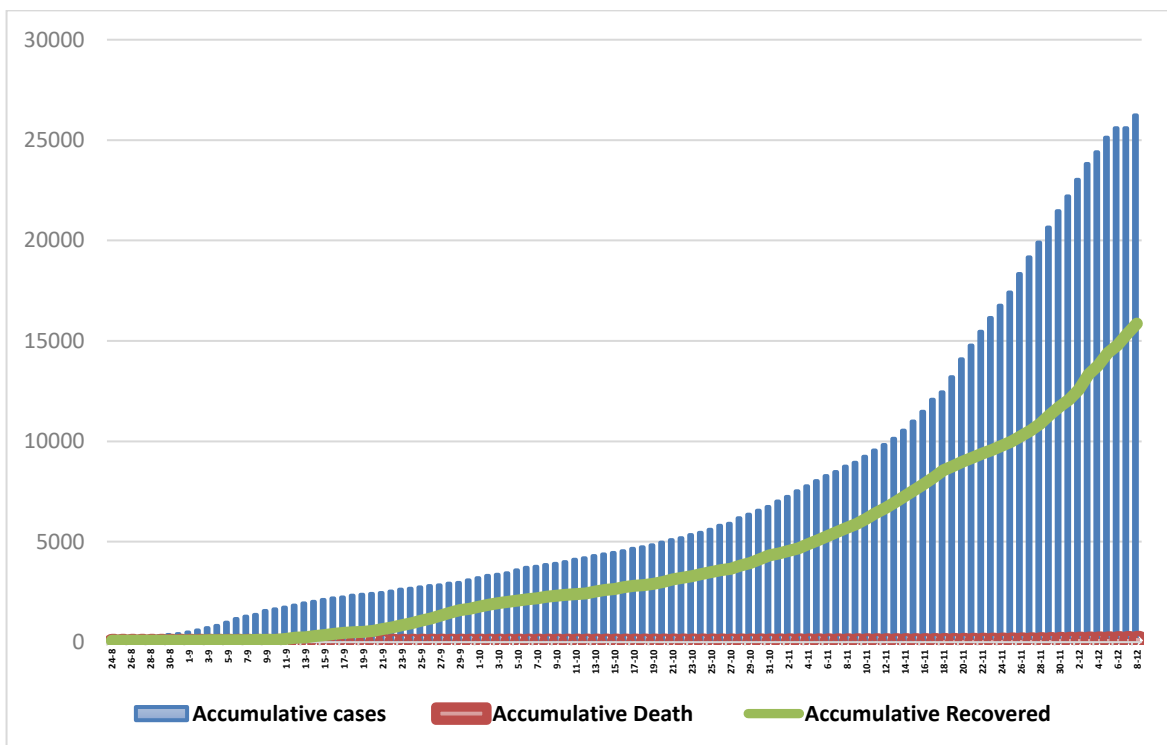


**VI. Geographical distribution of confirmed cases within the community**



Graph (4) shows geographical distribution of cases within the community per governorate.

**VII. Cumulative number of cases, recovered, deaths**



Graph (5) shows Cumulative number of cases, recovered, deaths.