



Date: December 11, 2020

10:00AM
Last 24 Hr.

Daily Report for COVID 19 Virus

Situation report about Covid 19 epidemiological, presented the daily detected cases.

Summary of the epidemiological situation

Table (1) shows the numbers of cases

	Samples	Confirmed	Recovered	Deaths	Active
Today	1726	617	730	6	9834
Total	212536	27434	17425	175	

Closed Cases		
Worldwide	Gaza Strip	
41,492,849 (97%)	17425 (99%)	Recovered
1,492,989 (3%)	175 (1%)	Deaths
42,985,838	17,600	Total Closed
Active Cases		
21,522,337	9834	Number



Local reported cases within community – Emergency level (D)

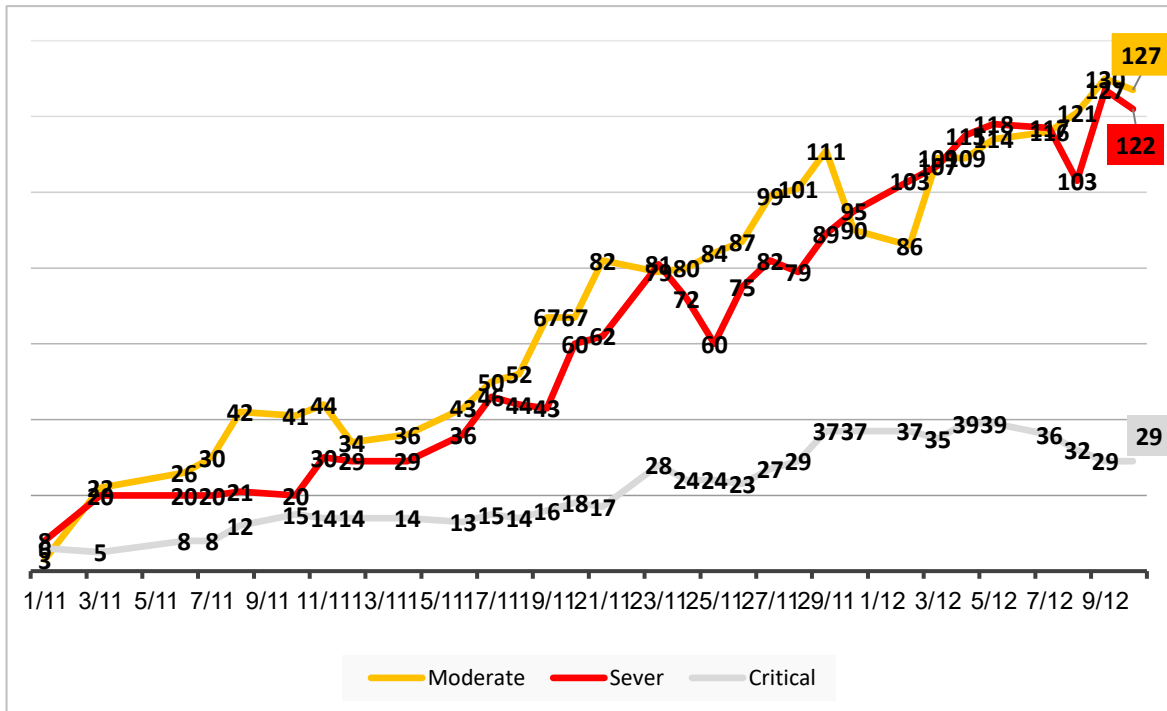
• The total number of confirmed cases is 27148, of which 9817 are still active cases receive medical care in hospitals and isolation centers, 17157 cases fully recovered and were discharged, while the number of deaths reached 174 deaths.

I. Classification of active cases according to severity

Table (2) shows the classification of cases according to the degree of severity

Total	Other	Critical	Sever	Moderate	Mild	Classification
9834	66	29	122	127	9490	Total
100%	0.7%	0.3%	1.3%	1.3%	96.5%	Percent

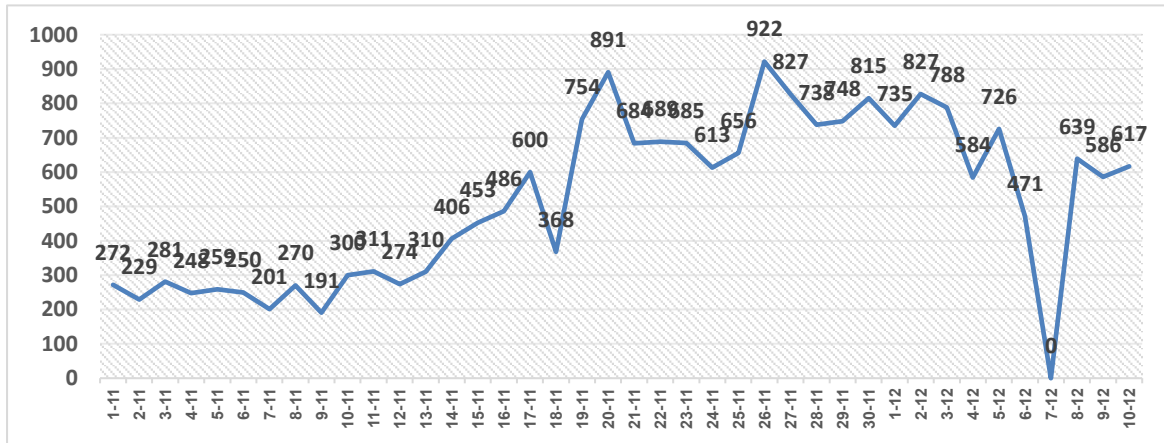
II. Daily classification of active cases according to severity



Graph (1) Shows the daily classification of cases according to degree of severity

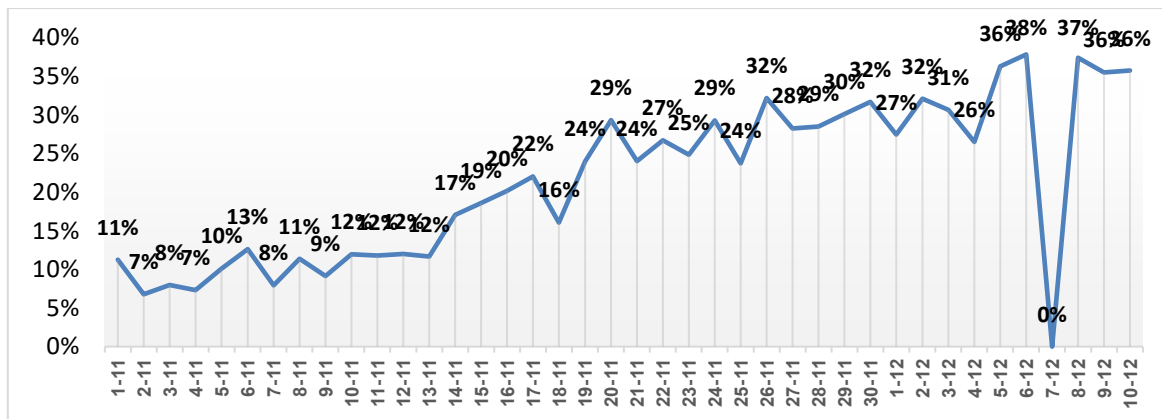


III. Daily number of new cases within the community



Graph (2) shows number of new cases per day within the community

IV. The percentage of positive tests of the daily samples



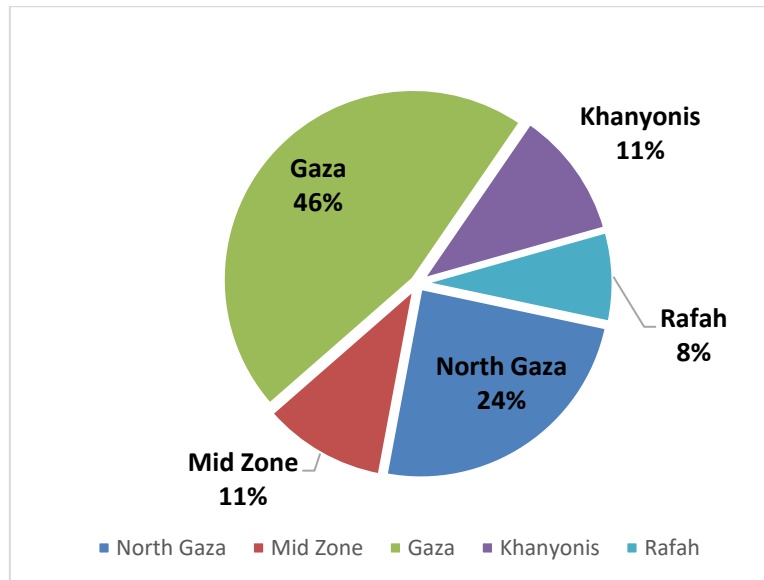
Graph (3) shows percentage of positive tests of the examined samples per day

V. Incidence of cases by governorate

Governorate	Cases	Population	Incidence rate per 100,000
North Gaza	6693	416,906	1605
Gaza	12643	690,111	1832
Mid zone	2894	325,884	888
Khanyonis	3076	413,727	743
Rafah	2128	260,117	818
Gaza strip	27434	2,106,745	1302

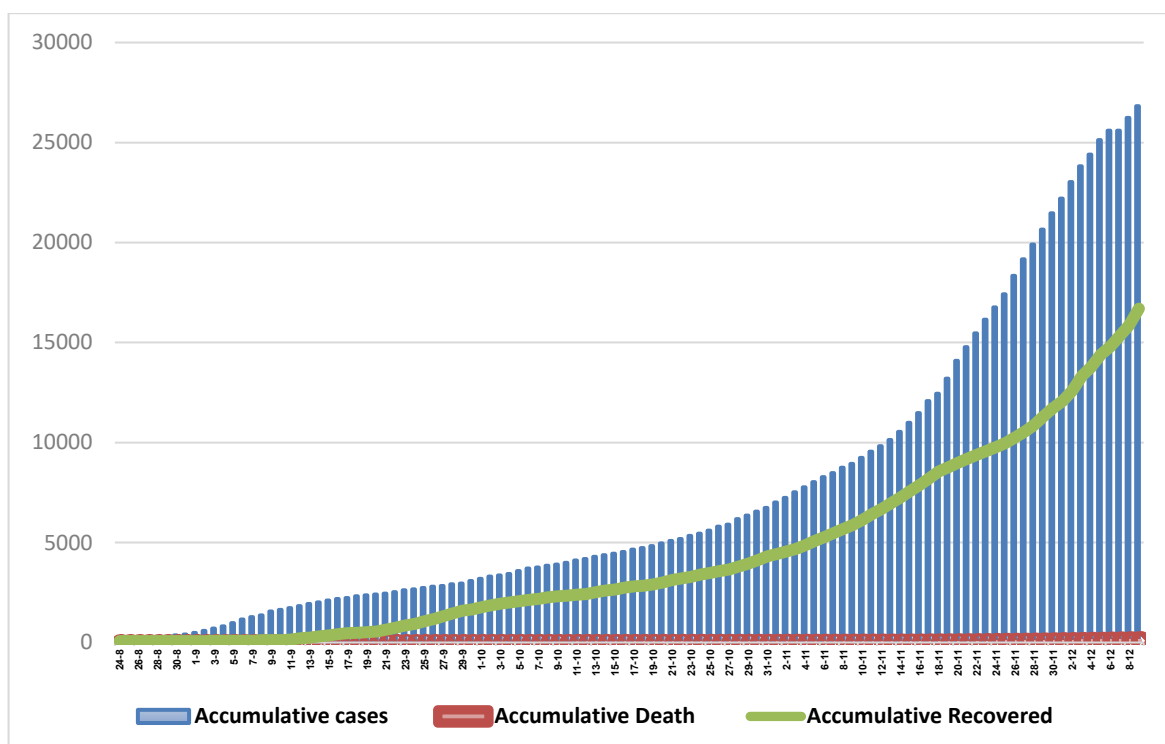


VI. Geographical distribution of confirmed cases within the community



Graph (4) shows geographical distribution of cases within the community per governorate.

VII. Cumulative number of cases, recovered, deaths



Graph (5) shows Cumulative number of cases, recovered, deaths.