



Date: December 14, 2020

10:00AM
Last 24 Hr.

Daily Report for COVID 19 Virus

Situation report about Covid 19 epidemiological, presented the daily detected cases.

Summary of the epidemiological situation

Table (1) shows the numbers of cases

	Samples	Confirmed	Recovered	Deaths	Active
Today	766	157	740	8	8717
Total	216452	28502	19583	202	

Closed Cases		
Worldwide	Gaza Strip	
41,492,849 (97%)	19583 (99%)	Recovered
1,492,989 (3%)	202 (1%)	Deaths
42,985,838	19,037	Total Closed
Active Cases		
21,522,337	8717	Number



Local reported cases within community – Emergency level (D)

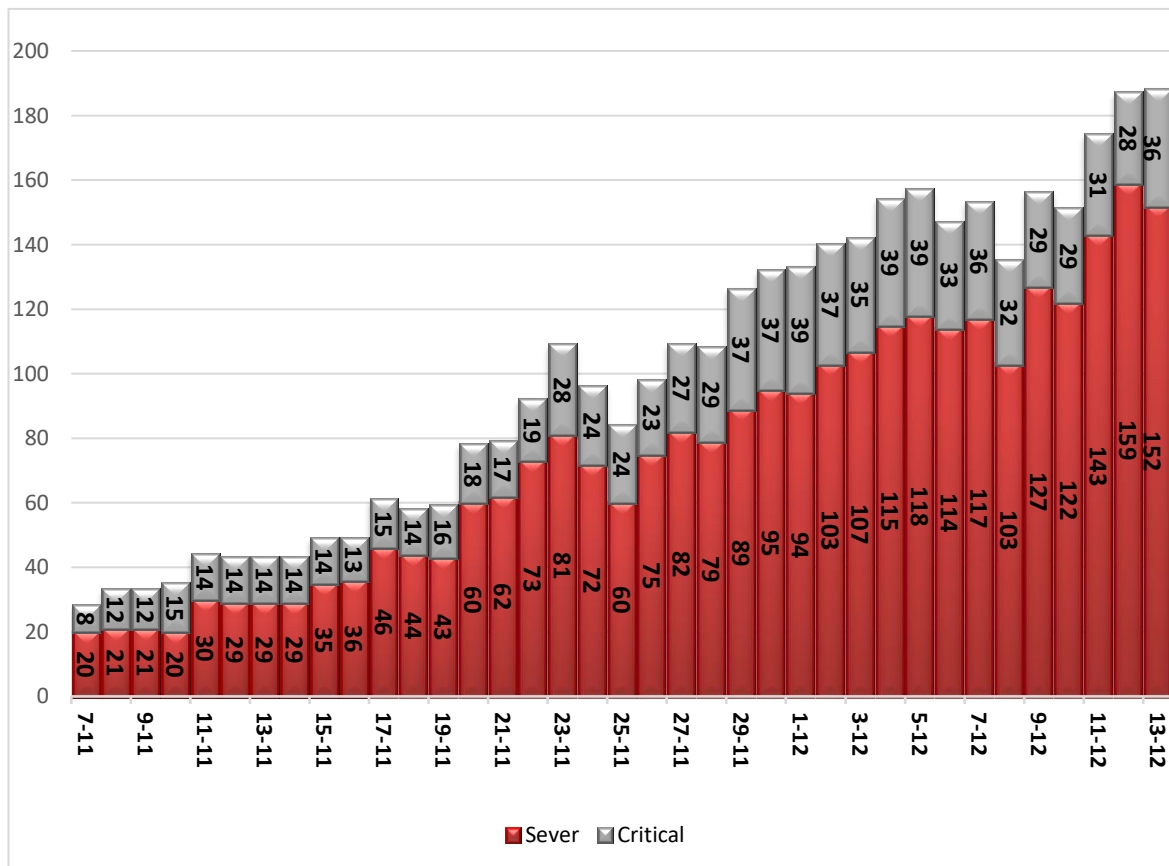
• The total number of confirmed cases is 28214, of which 8701 are still active cases receive medical care in hospitals and isolation centers, 19312 cases fully recovered and were discharged, while the number of deaths reached 201 deaths.

I. Classification of active cases according to severity

Table (2) shows the classification of cases according to the degree of severity

Total	Other	Critical	Sever	Moderate	Mild	Classification
8717	52	36	152	100	8377	Total
100%	0.6%	0.4%	1.7%	1.1%	96.1%	Percent

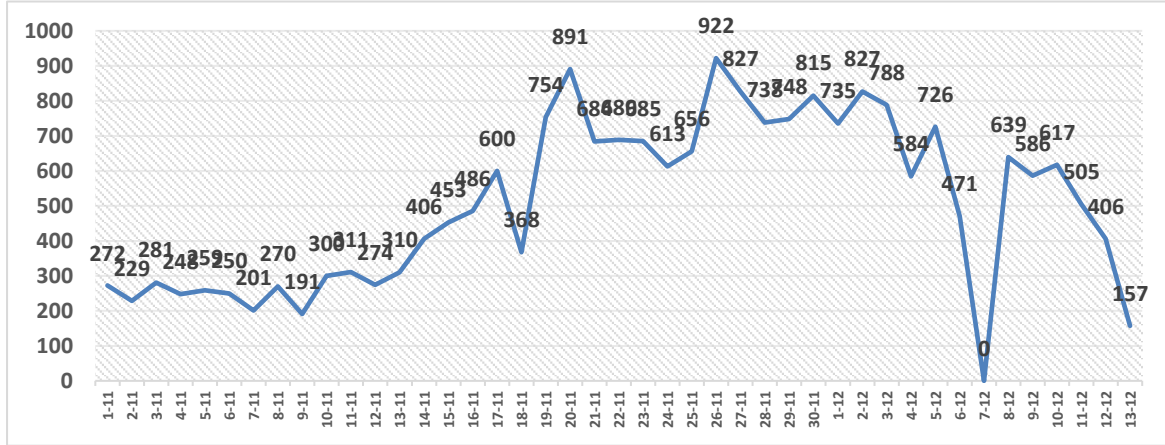
II. Daily classification of active cases according to severity



Graph (1) Shows the daily classification of cases according to degree of severity

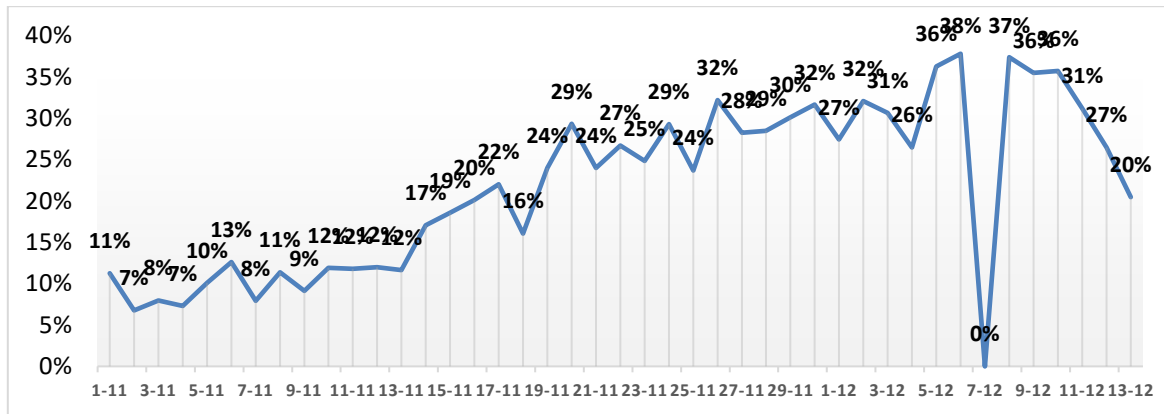


III. Daily number of new cases within the community



Graph (2) shows number of new cases per day within the community

IV. The percentage of positive tests of the daily samples



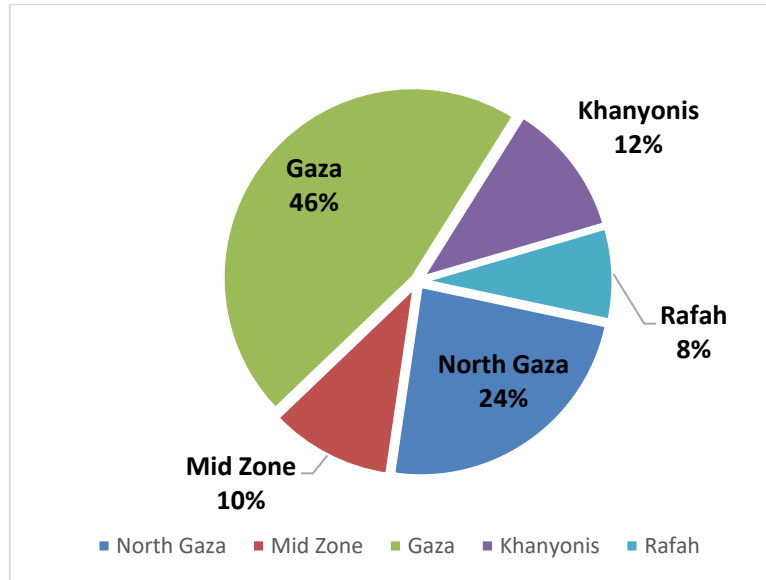
Graph (3) shows percentage of positive tests of the examined samples per day

V. Incidence of cases by governorate

Governorate	Cases	Population	Incidence rate per 100,000
North Gaza	6821	416,906	1636
Gaza	13145	690,111	1905
Mid zone	2988	325,884	917
Khanyonis	3298	413,727	797
Rafah	2250	260,117	865
Gaza strip	28502	2,106,745	1353

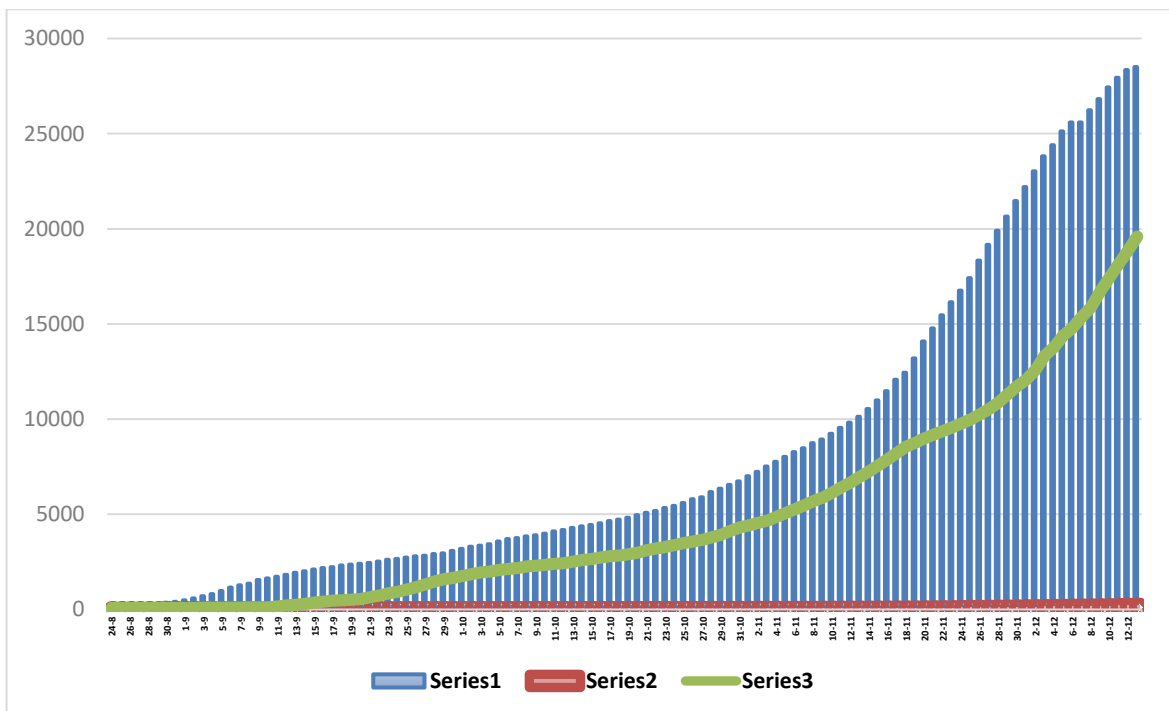


VI. Geographical distribution of confirmed cases within the community



Graph (4) shows geographical distribution of cases within the community per governorate.

VII. Cumulative number of cases, recovered, deaths



Graph (5) shows Cumulative number of cases, recovered, deaths.