



Date: December 26, 2020

10:00AM
Last 24 Hr.

Daily Report for COVID 19 Virus

Situation report about Covid 19 epidemiological, presented the daily detected cases.

Summary of the epidemiological situation

Table (1) shows the numbers of cases

	Samples	Confirmed	Recovered	Deaths	Active
Today	2240	792	405	12	10577
Total	243494	37583	26683	323	

Closed Cases		
Worldwide	Gaza Strip	
41,492,849 (97%)	26683 (99%)	Recovered
1,492,989 (3%)	323 (1%)	Deaths
42,985,838	27006	Total Closed
Active Cases		
21,522,337	10577	Number



Local reported cases within community – Emergency level (D)

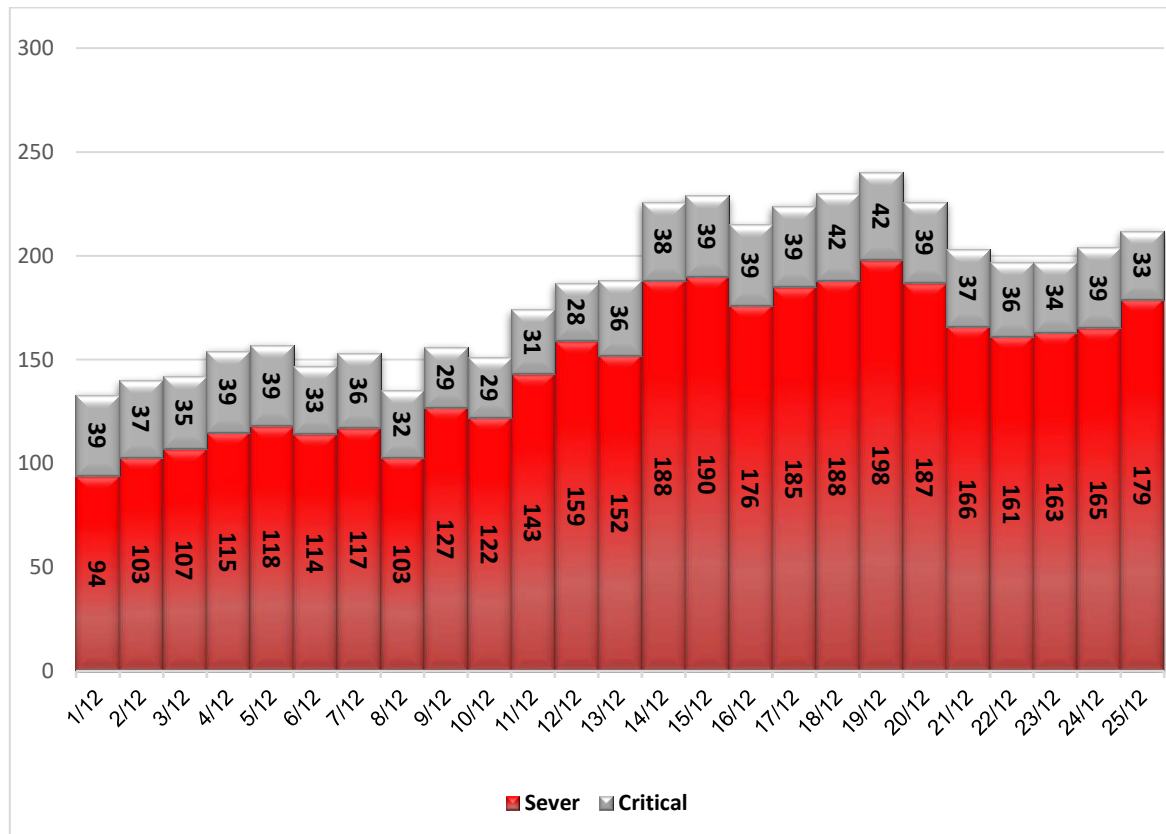
- The total number of confirmed cases is 37288, of which 10567 are still active cases, 26399 cases fully recovered and were discharged, while the number of deaths reached 322 deaths.

I. Classification of active cases according to severity

Table (2) shows the classification of cases according to the degree of severity

Total	Other	Critical	Sever	Moderate	Mild	Classification
10577	44	33	179	56	10265	Total
100%	0.4%	0.3%	1.7%	0.5%	97.1%	Percent

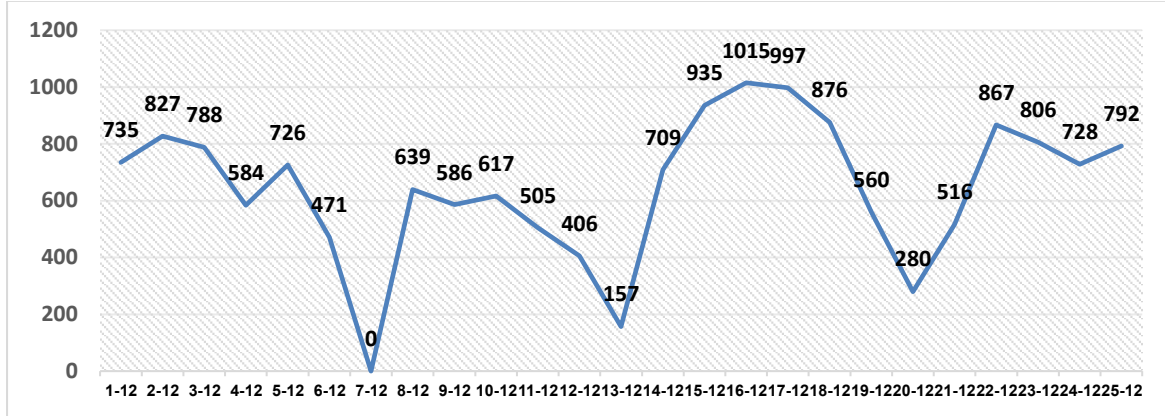
II. Daily classification of active cases according to severity



Graph (1) Shows the daily classification of cases according to degree of severity

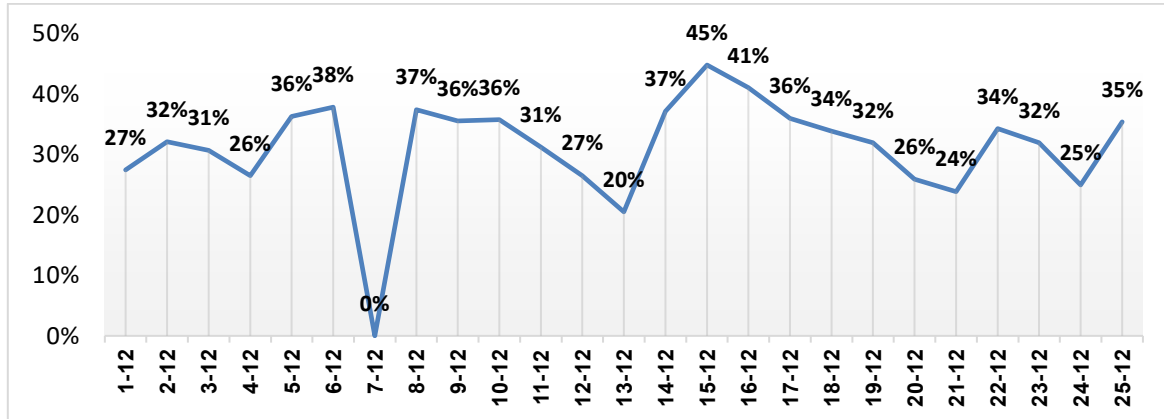


III. Daily number of new cases.



Graph (2) shows number of new cases per day within the community

IV. The percentage of positive tests of the daily samples



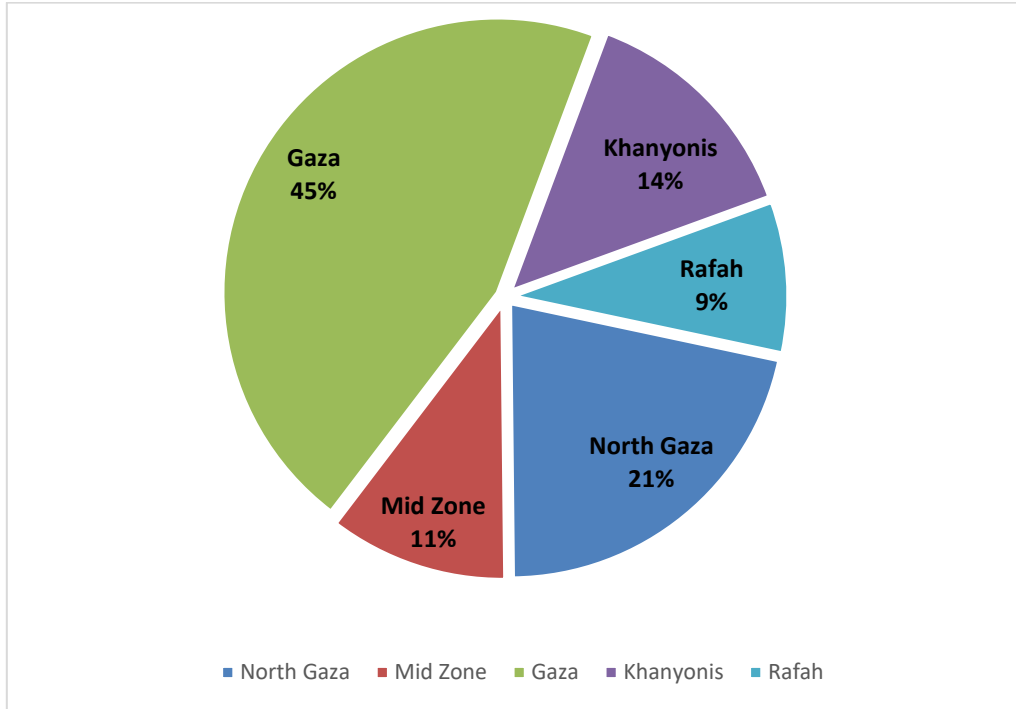
Graph (3) shows percentage of positive tests of the examined samples per day

V. Incidence of cases by governorate

Governorate	Cases	Population	Incidence rate per 100,000
North Gaza	7905	416,906	1896
Gaza	17108	690,111	2479
Mid zone	4057	325,884	1245
Khanyonis	5255	413,727	1270
Rafah	3258	260,117	1253
Gaza strip	37583	2,106,745	1784

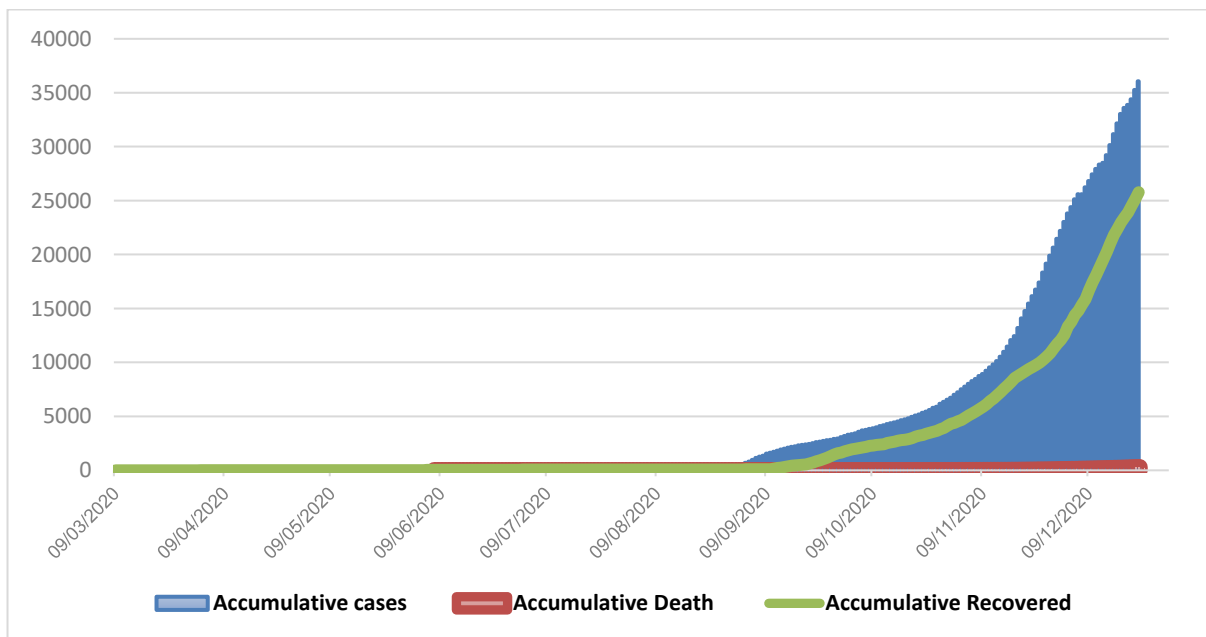


VI. Geographical distribution of confirmed cases.



Graph (4) shows geographical distribution of cases within the community per governorate.

VII. Cumulative number of cases, recovered, deaths



Graph (5) shows Cumulative number of cases, recovered, deaths.