



Date: December 28, 2020

10:00AM  
Last 24 Hr.

## Daily Report for COVID 19 Virus

Situation report about Covid 19 epidemiological, presented the daily detected cases.

### Summary of the epidemiological situation

Table (1) shows the numbers of cases

	Samples	Confirmed	Recovered	Deaths	Active
Today	1754	477	702	7	10729
Total	245349	38614	27545	340	

Closed Cases		
Worldwide	Gaza Strip	
41,492,849 (97%)	27545 (99%)	Recovered
1,492,989 (3%)	340 (1%)	Deaths
42,985,838	27885	Total Closed
Active Cases		
21,522,337	10729	Number



## Local reported cases within community – Emergency level (D)

- The total number of confirmed cases is 38319, of which 10722 are still active cases, 27258 cases fully recovered and were discharged, while the number of deaths reached 339 deaths.

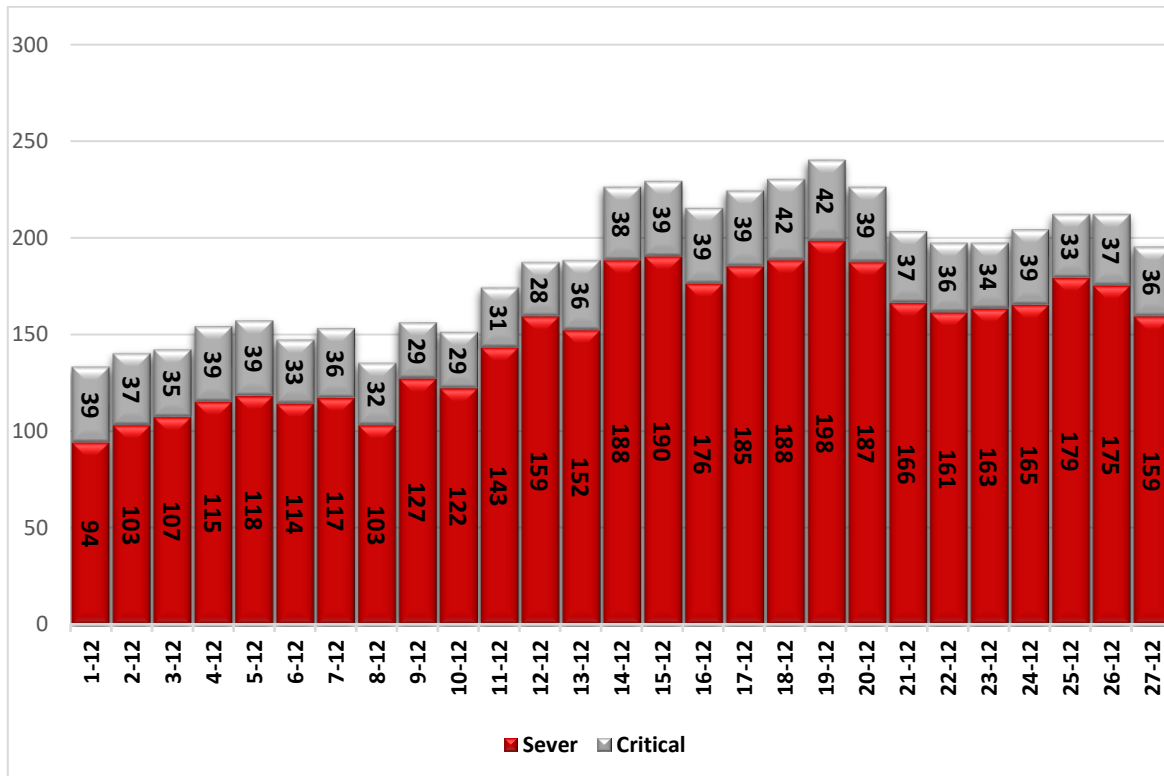
### I. Classification of active cases according to severity

Table (2) shows the classification of cases according to the degree of severity

Total	In Patient				Mild	Classification
	Other	Critical	Sever	Moderate		
10729	71	36	159	61	10402	Total
100%	0.7%	0.3%	1.5%	0.6%	97.0%	Percent

\*Cases needing medical care for reasons other than the corona

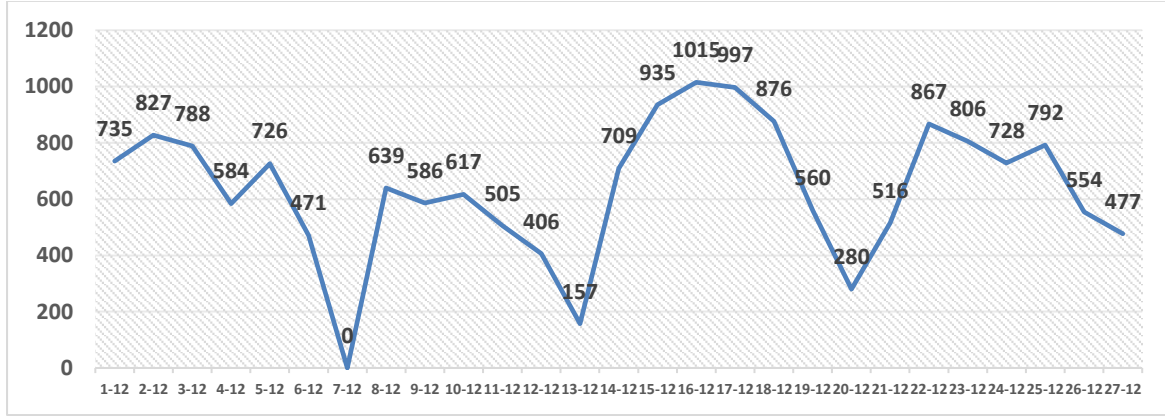
### II. Daily classification of active cases according to severity



Graph (1) Shows the daily classification of cases according to degree of severity

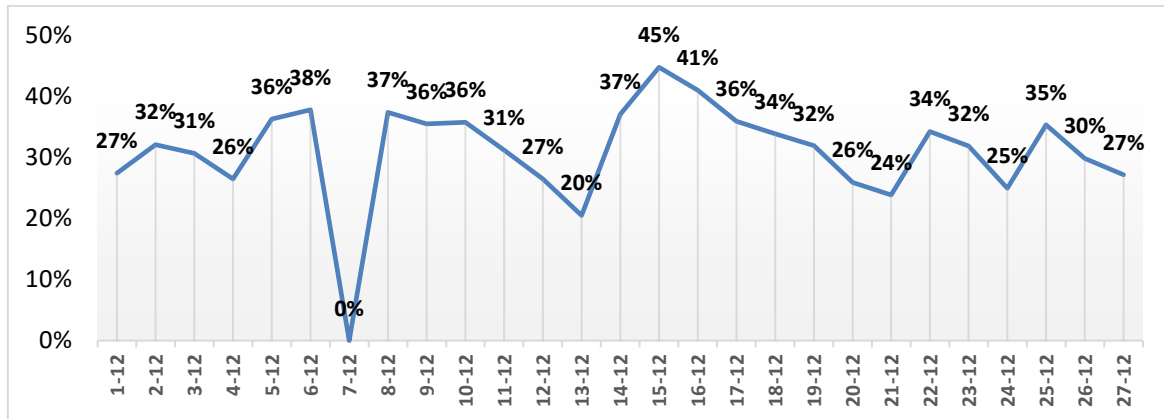


### III. Daily number of new cases.



Graph (2) shows number of new cases per day within the community

### IV. The percentage of positive tests of the daily samples



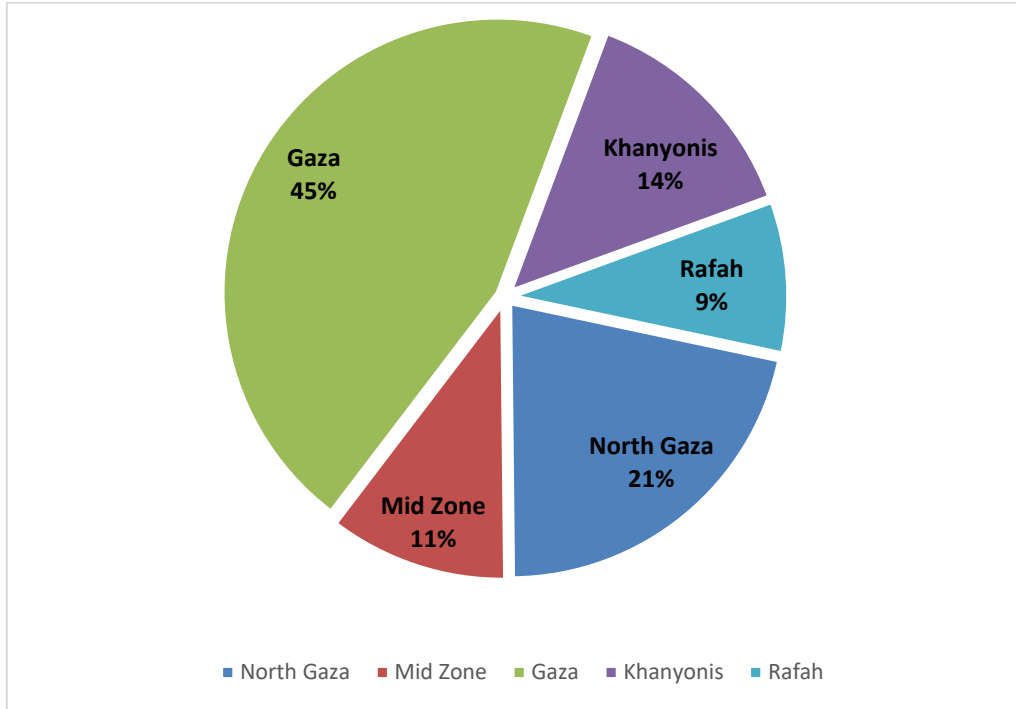
Graph (3) shows percentage of positive tests of the examined samples per day

### V. Incidence of cases by governorate

Governorate	Cases	Population	Incidence rate per 100,000
North Gaza	7966	416,906	1924
Gaza	17263	690,111	2526
Mid zone	4111	325,884	1275
Khanyonis	5408	413,727	1352
Rafah	3389	260,117	1311
Gaza strip	38137	2,106,745	1833

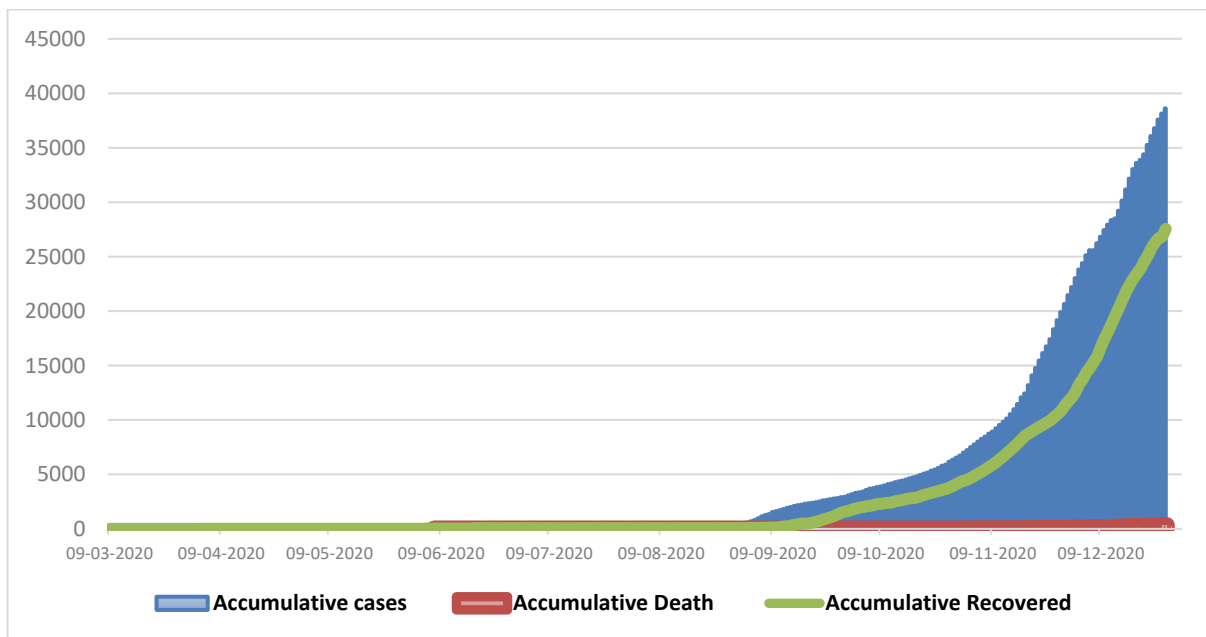


VI. Geographical distribution of confirmed cases.



Graph (4) shows geographical distribution of cases per governorate.

VII. Cumulative number of cases, recovered, deaths



Graph (5) shows Cumulative number of cases, recovered, deaths.