



Date: 14,01, 2021

10:00AM  
Last 24 Hr.

## Daily Report for COVID 19 Virus

Situation report about Covid 19 epidemiological, presented the daily detected cases.

### Summary of the epidemiological situation

Table (1) shows the numbers of cases

	Samples	Confirmed	Recovered	Deaths	Active
Today	2262	368	689	2	7000
Total	281476	46892	39428	464	

Closed Cases		
Worldwide	Gaza Strip	
50,958,070 (96.3%)	39428 (99%)	Recovered
1,977,893 (3.7%)	464 (1%)	Deaths
52,935,963	39892	Total Closed
Active Cases		
39,377,236	7000	Number



## Local reported cases within community – Emergency level (D)

- The total number of confirmed cases is 46589, of which 6993 are still active cases, 39133 cases fully recovered and were discharged, while the number of deaths reached 463 deaths.

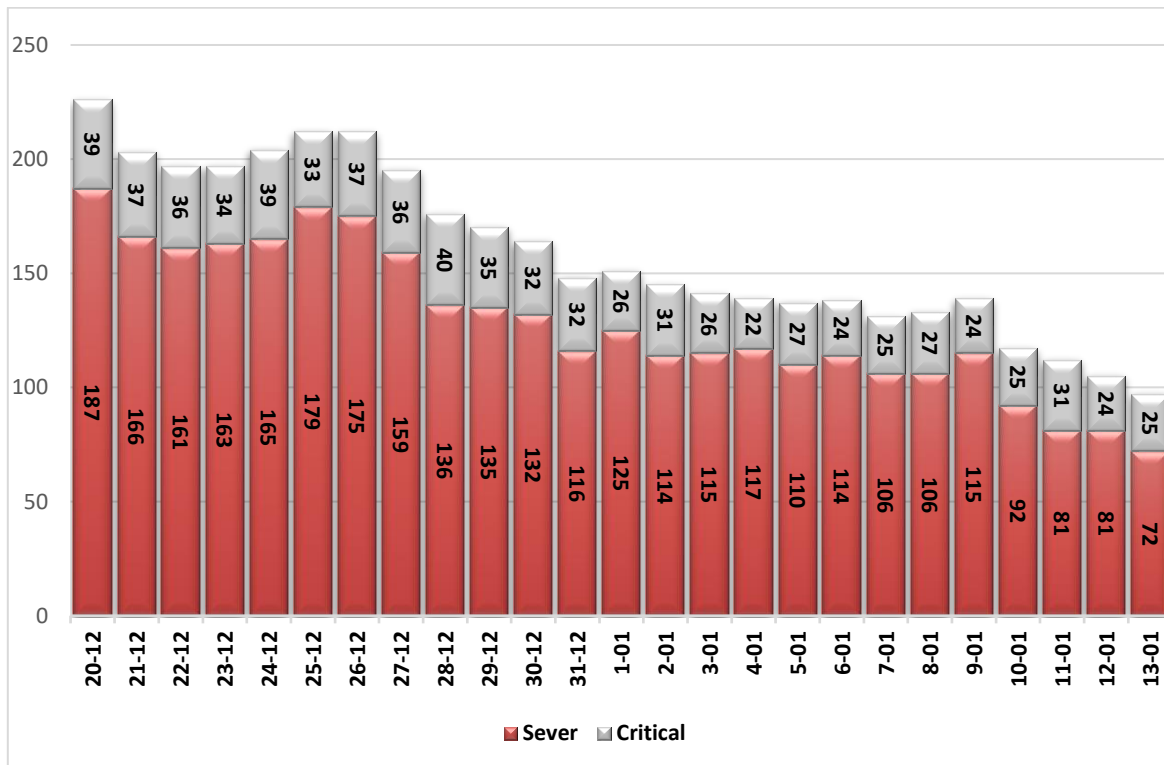
### I. Classification of active cases according to severity

Table (2) shows the classification of cases according to the degree of severity

Total	In Patient				Mild	Classification
	Other	Critical	Sever	Moderate		
7000	27	25	72	59	6817	Total
100%	0.4%	0.4%	1.0%	0.8%	97.4%	Percent

\*Cases needing medical care for reasons other than the corona

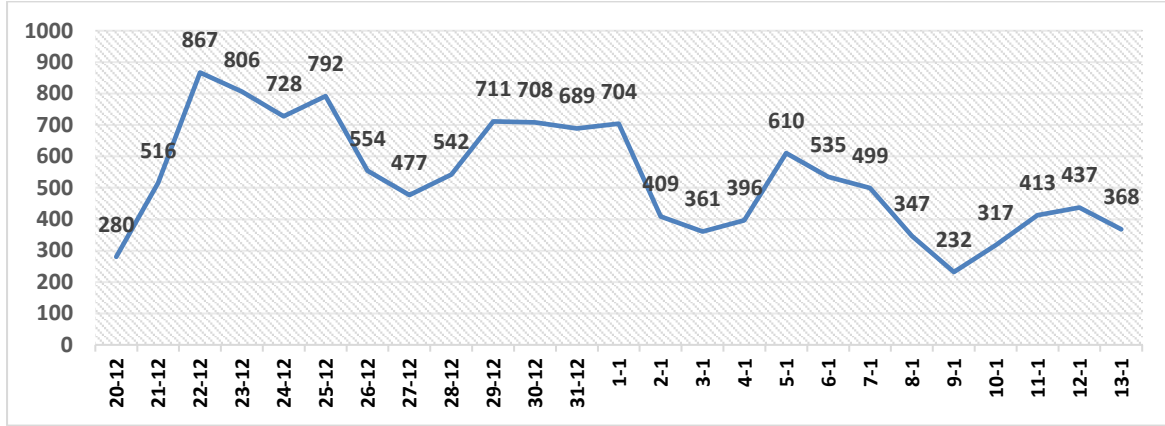
### II. Daily classification of active cases according to severity



Graph (1) Shows the daily classification of cases according to degree of severity

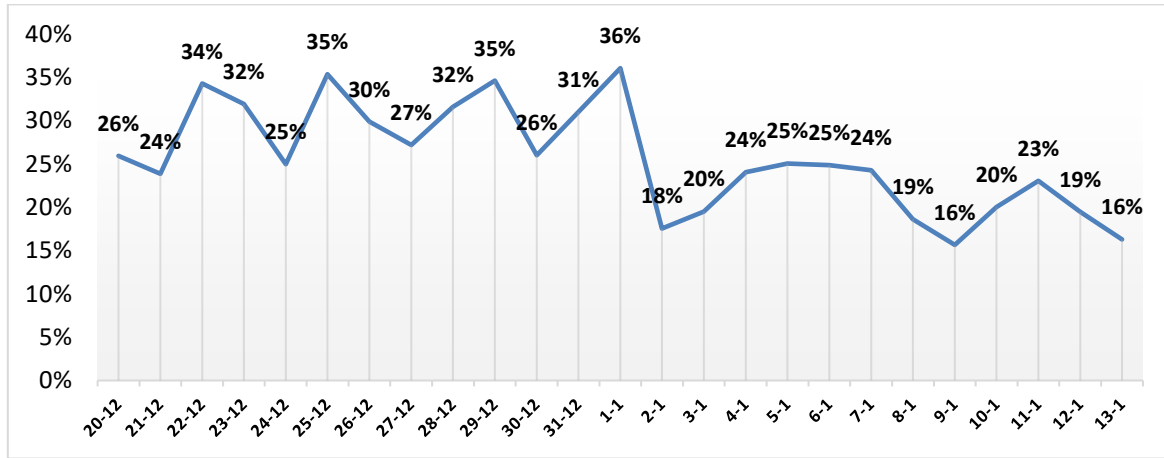


### III. Daily number of new cases.



Graph (2) shows number of new cases per day within the community

### IV. The percentage of positive tests of the daily samples



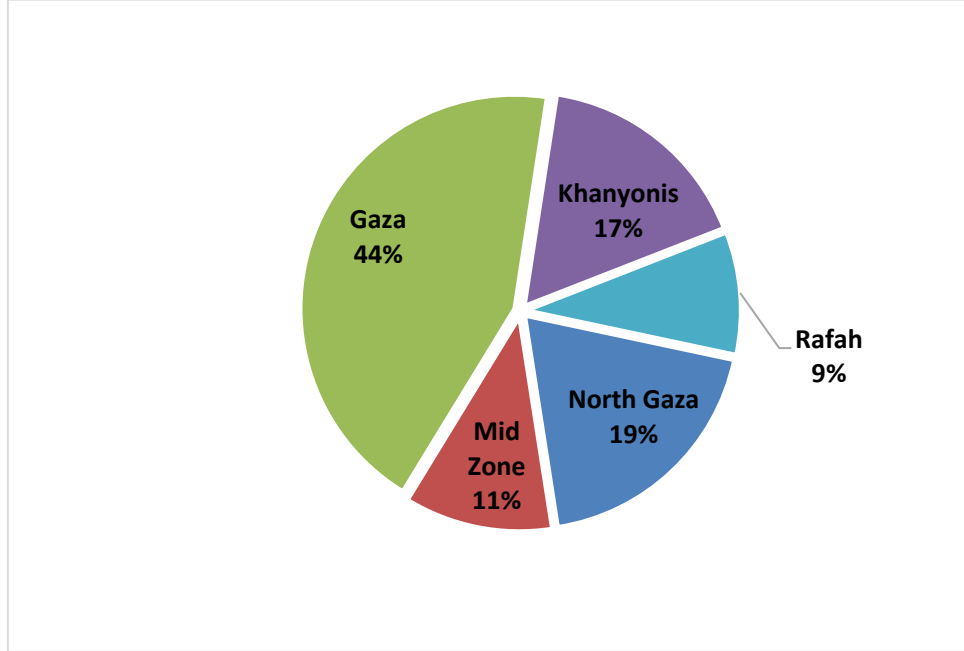
Graph (3) shows percentage of positive tests of the examined samples per day

### V. Incidence of cases by governorate

Governorate	Cases	Population	Incidence rate per 100,000
North Gaza	9007	416,906	2160
Gaza	20489	690,111	2969
Mid zone	5248	325,884	1610
Khanyonis	7805	413,727	1887
Rafah	4343	260,117	1670
Gaza strip	46892	2,106,745	2226

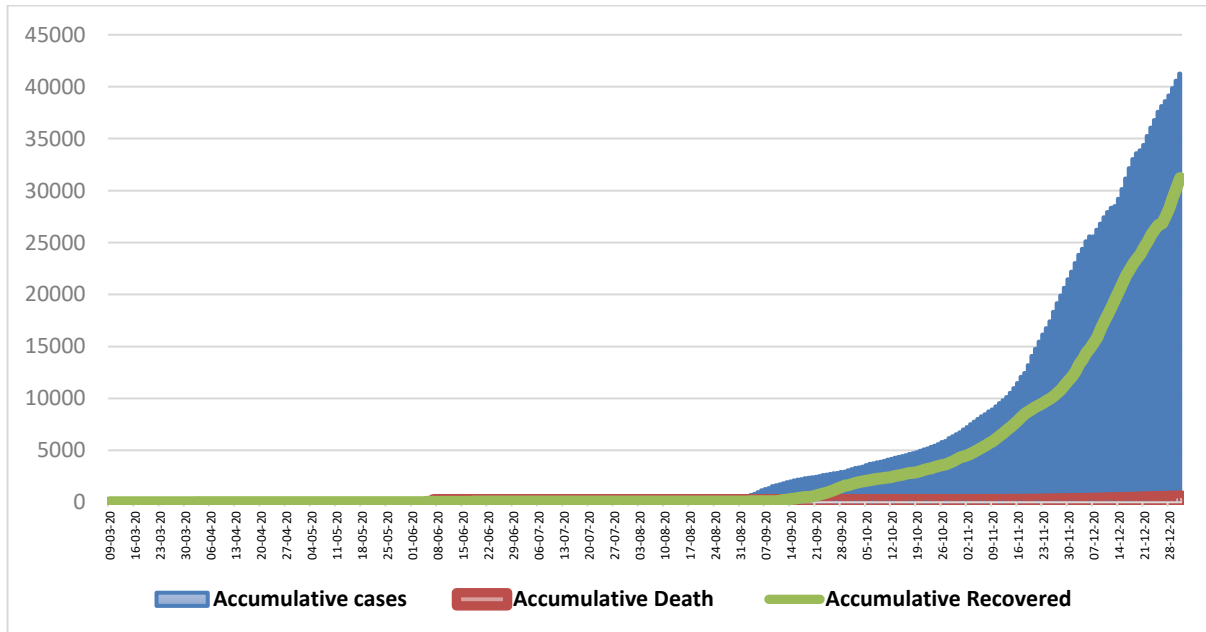


## VI. Geographical distribution of confirmed cases.



Graph (4) shows geographical distribution of cases per governorate.

## VII. Cumulative number of cases, recovered, deaths



Graph (5) shows Cumulative number of cases, recovered, deaths.