



Date: 15,01, 2021

10:00AM  
Last 24 Hr.

## Daily Report for COVID 19 Virus

Situation report about Covid 19 epidemiological, presented the daily detected cases.

### Summary of the epidemiological situation

Table (1) shows the numbers of cases

	Samples	Confirmed	Recovered	Deaths	Active
Today	2359	403	700	10	6693
Total	283835	47295	40128	474	

Closed Cases		
Worldwide	Gaza Strip	
50,958,070 (96.3%)	40128 (99%)	Recovered
1,977,893 (3.7%)	474 (1%)	Deaths
52,935,963	40602	Total Closed
Active Cases		
39,377,236	6693	Number



## Local reported cases within community – Emergency level (D)

- The total number of confirmed cases is 46992, of which 6686 are still active cases, 39833 cases fully recovered and were discharged, while the number of deaths reached 473 deaths.

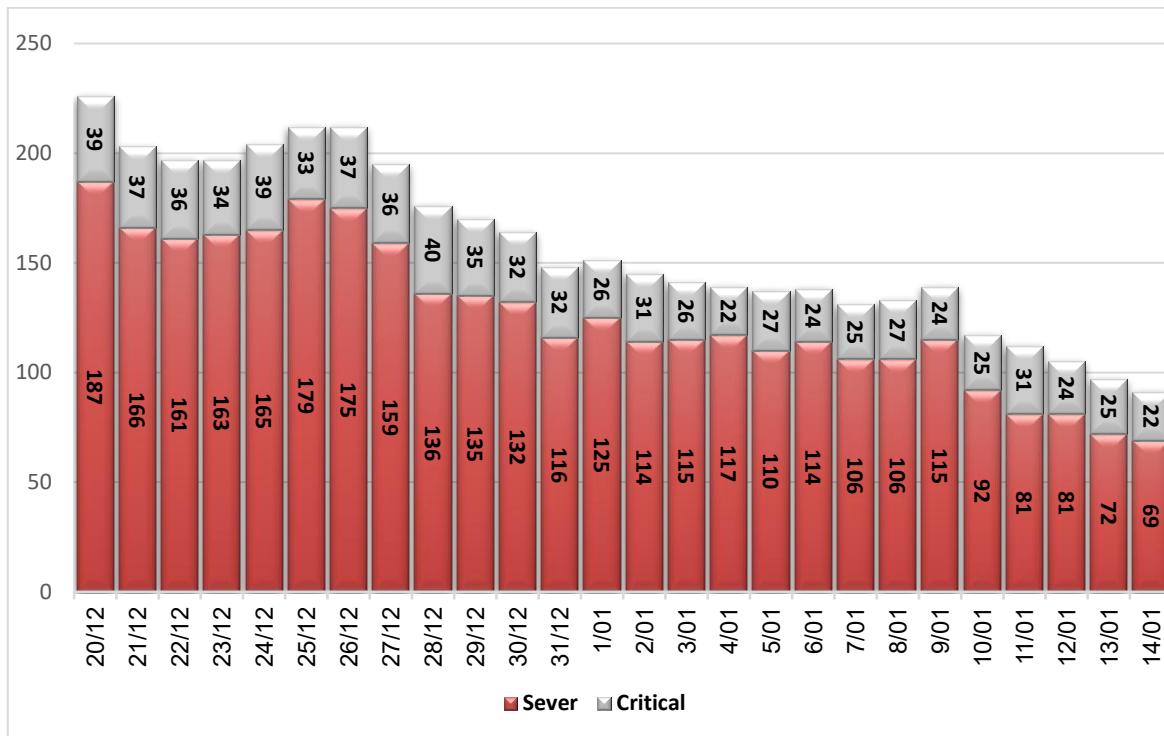
### I. Classification of active cases according to severity

Table (2) shows the classification of cases according to the degree of severity

Total	In Patient				Mild	Classification
	Other	Critical	Sever	Moderate		
6693	17	22	69	54	6531	Total
100%	0.3%	0.3%	1.0%	0.8%	97.6%	Percent

\*Cases needing medical care for reasons other than the corona

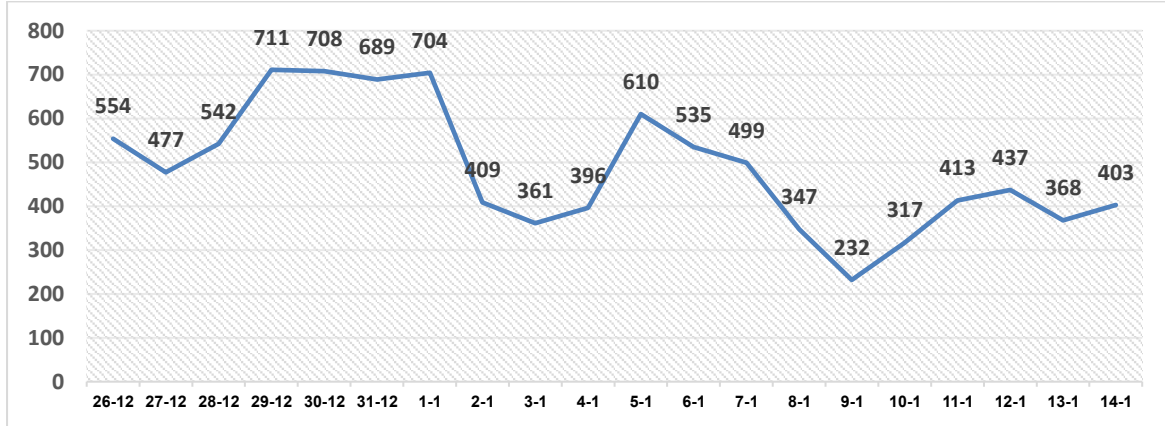
### II. Daily classification of active cases according to severity



Graph (1) Shows the daily classification of cases according to degree of severity

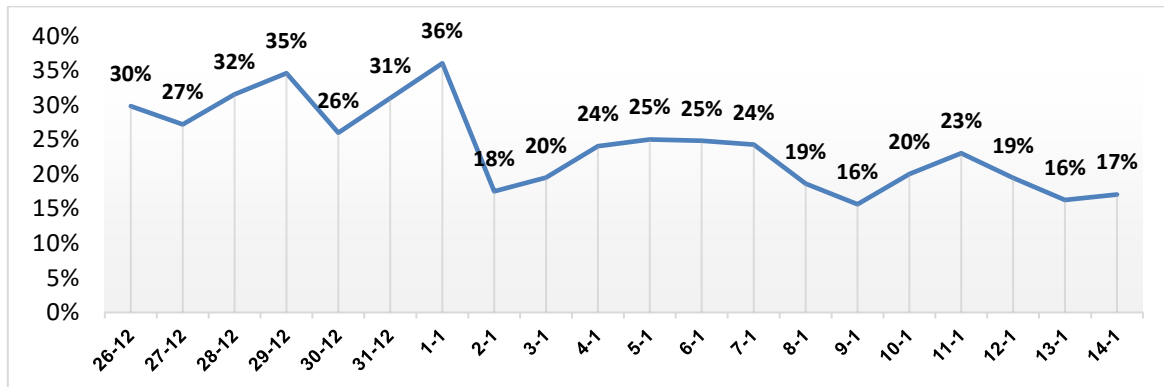


### III. Daily number of new cases.



Graph (2) shows number of new cases per day within the community

### IV. The percentage of positive tests of the daily samples



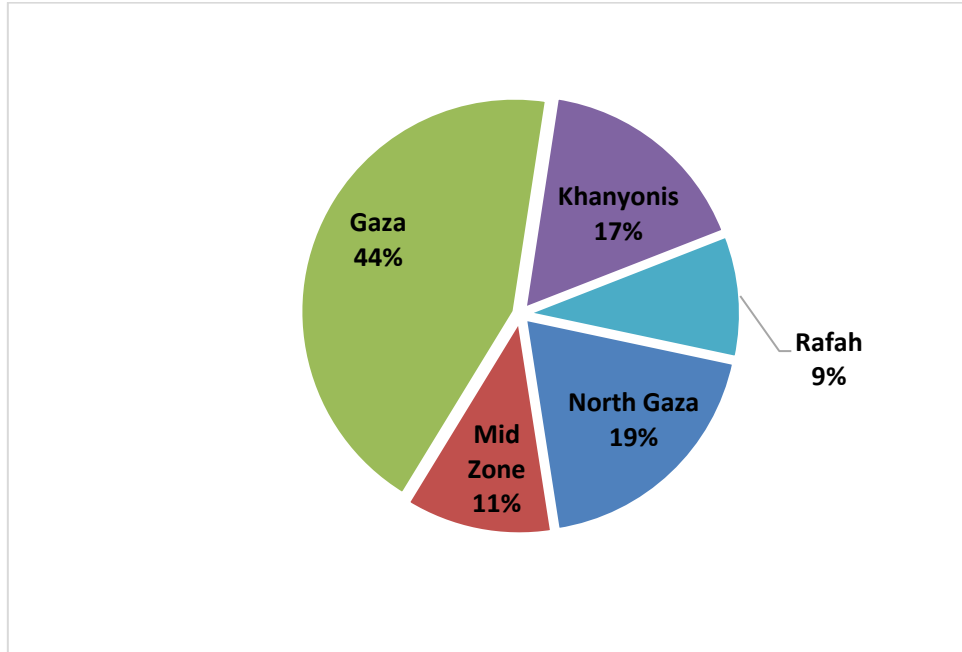
Graph (3) shows percentage of positive tests of the examined samples per day

### V. Incidence of cases by governorate

Governorate	Cases	Population	Incidence rate per 100,000
North Gaza	9076	416,906	2177
Gaza	20623	690,111	2988
Mid zone	5329	325,884	1635
Khanyonis	7887	413,727	1906
Rafah	4380	260,117	1684
Gaza strip	47295	2,106,745	2245

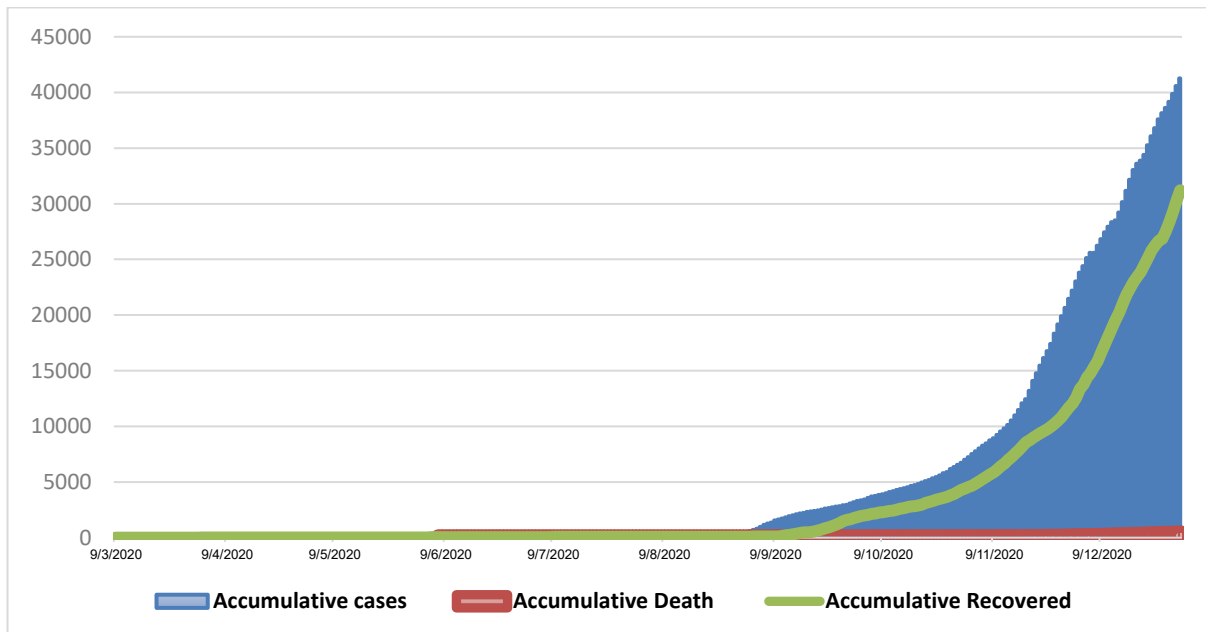


## VI. Geographical distribution of confirmed cases.



Graph (4) shows geographical distribution of cases per governorate.

## VII. Cumulative number of cases, recovered, deaths



Graph (5) shows Cumulative number of cases, recovered, deaths.