



Date: 20,01, 2021

10:00AM  
Last 24 Hr.

## Daily Report for COVID 19 Virus

Situation report about Covid 19 epidemiological, presented the daily detected cases.

### Summary of the epidemiological situation

Table (1) shows the numbers of cases

	Samples	Confirmed	Recovered	Deaths	Active
Today	1430	285	603	3	5849
Total	292161	48626	42281	496	

Closed Cases		
Worldwide	Gaza Strip	
50,958,070 (96.3%)	42281 (99%)	Recovered
1,977,893 (3.7%)	496 (1%)	Deaths
52,935,963	42777	Total Closed
Active Cases		
39,377,236	5849	Number



## Local reported cases within community – Emergency level (D)

- The total number of confirmed cases is 48322, of which 5844 are still active cases, 41983 cases fully recovered and were discharged, while the number of deaths reached 495 deaths.

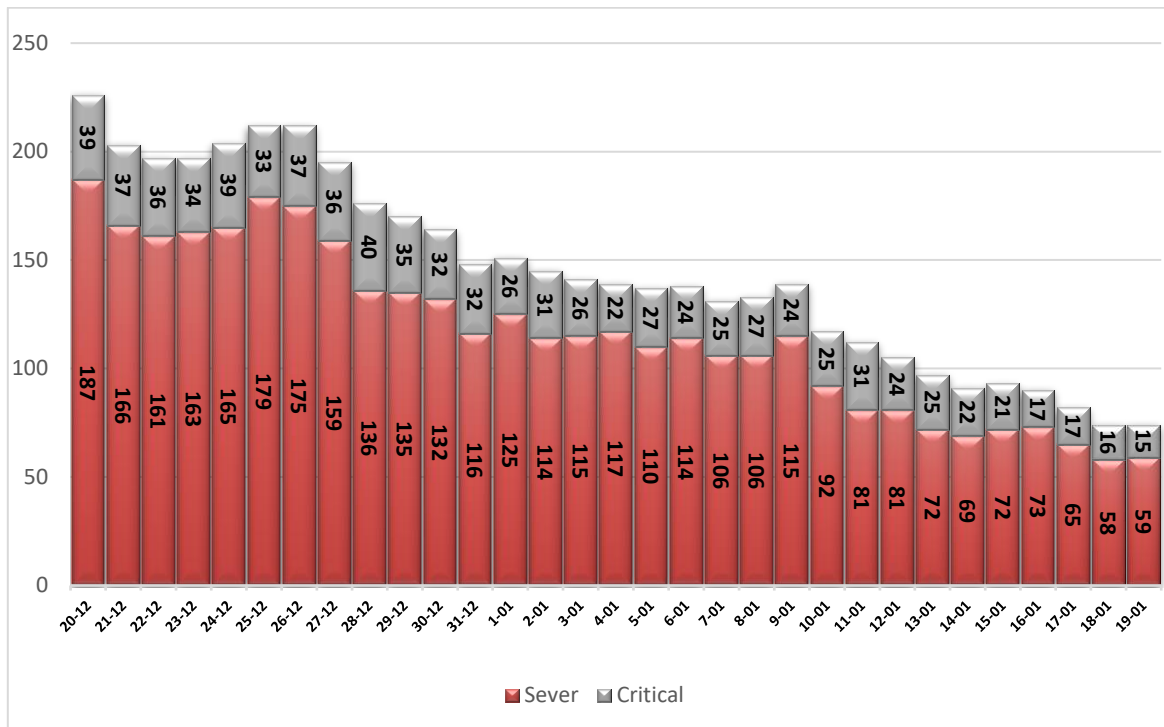
### I. Classification of active cases according to severity

Table (2) shows the classification of cases according to the degree of severity

Total	In Patient				Mild	Classification
	Other	Critical	Sever	Moderate		
5849	21	15	59	43	5711	Total
100%	0.4%	0.3%	1.0%	0.7%	97.6%	Percent

\*Cases needing medical care for reasons other than the corona

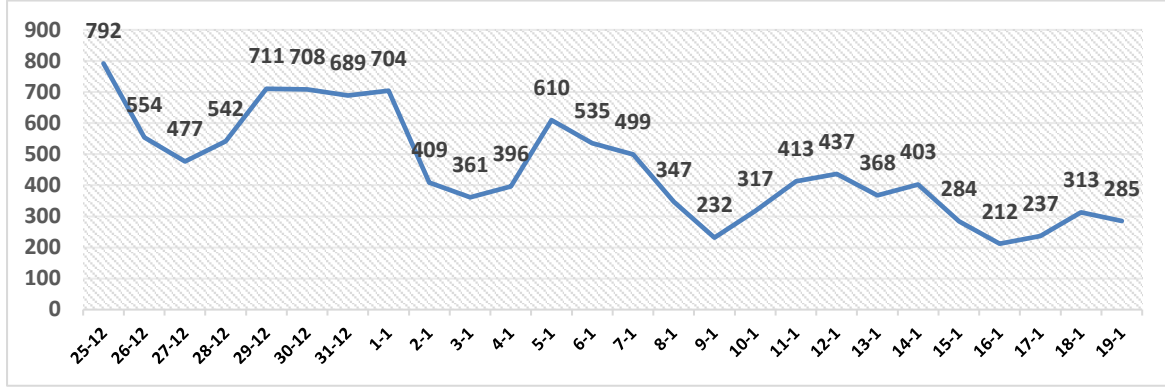
### II. Daily classification of active cases according to severity



Graph (1) Shows the daily classification of cases according to degree of severity

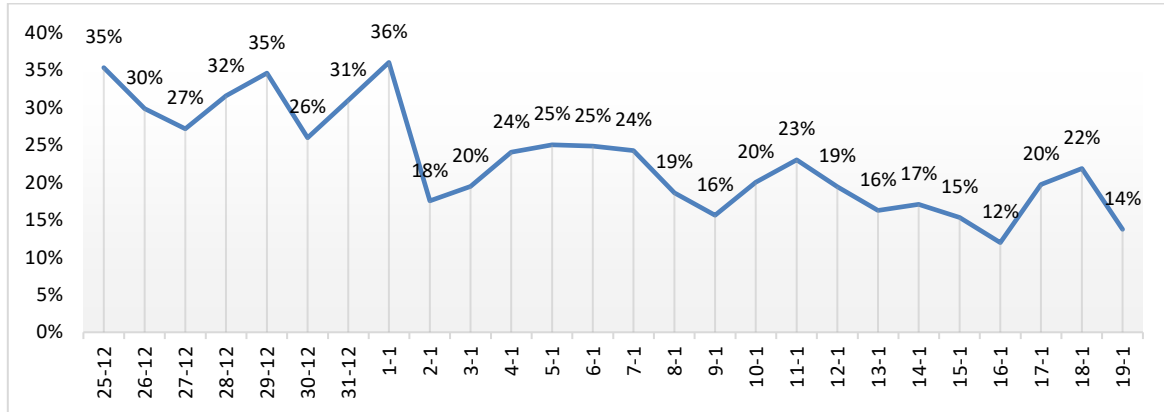


### III. Daily number of new cases.



Graph (2) shows number of new cases per day within the community

### IV. The percentage of positive tests of the daily samples



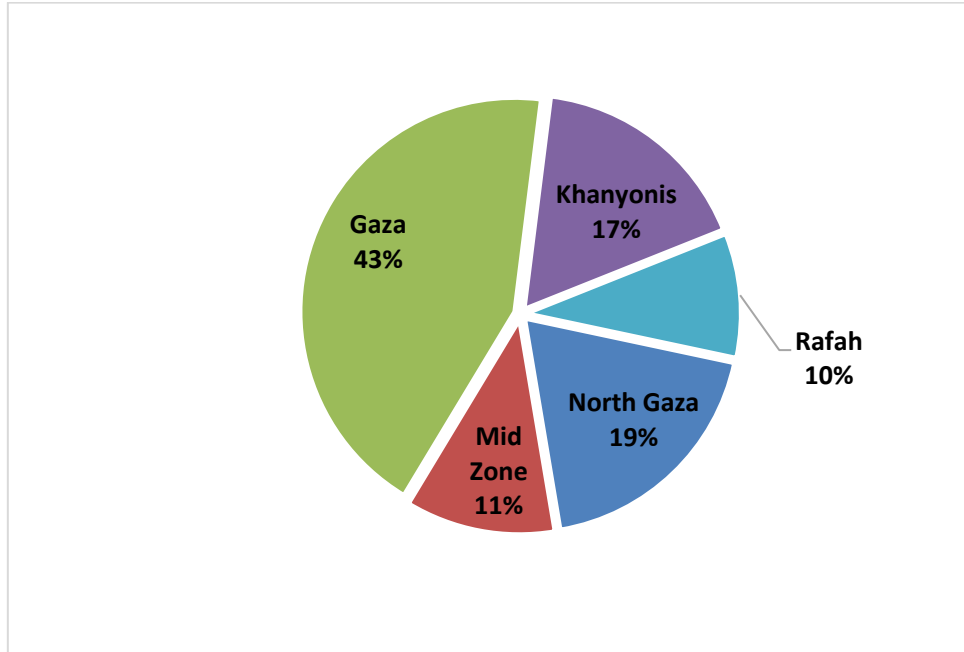
Graph (3) shows percentage of positive tests of the examined samples per day

### V. Incidence of cases by governorate

Governorate	Cases	Population	Incidence rate per 100,000
North Gaza	9221	416,906	2212
Gaza	21008	690,111	3044
Mid zone	5544	325,884	1701
Khanyonis	8280	413,727	2001
Rafah	4573	260,117	1758
Gaza strip	48626	2,106,745	2308

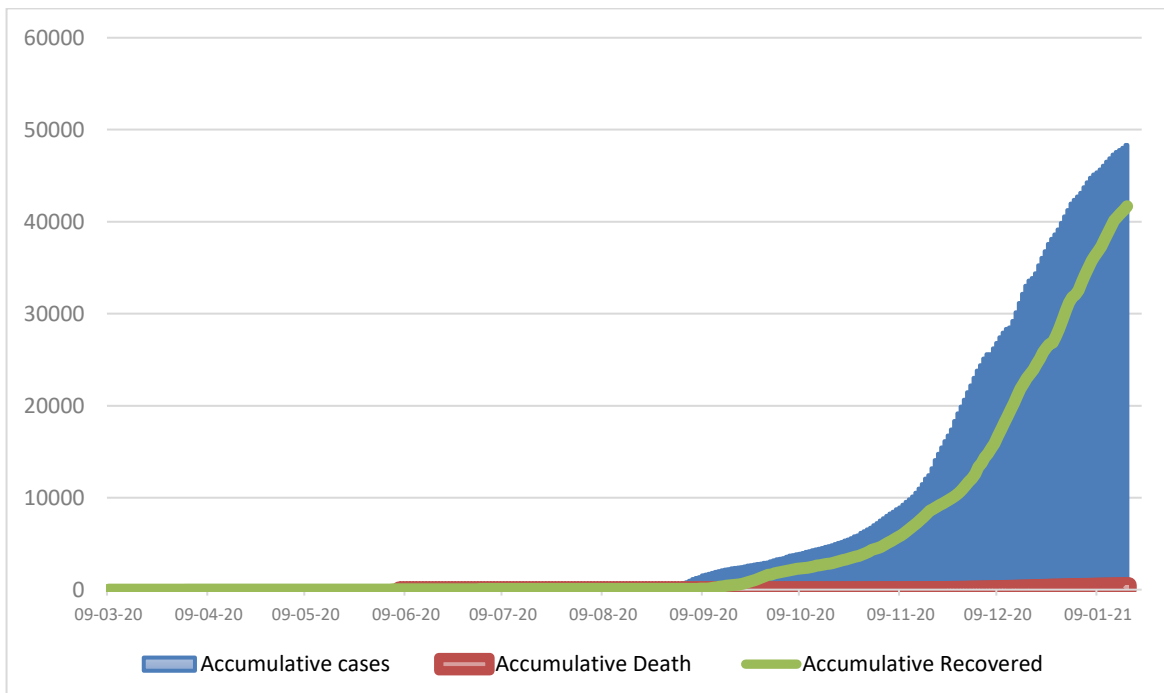


VI. Geographical distribution of confirmed cases.



Graph (4) shows geographical distribution of cases per governorate.

VII. Cumulative number of cases, recovered, deaths



Graph (5) shows Cumulative number of cases, recovered, deaths.