



Date: 03,05, 2021

10:00AM
Last 24 Hr.

Daily Report for COVID 19 Virus

Situation report about Covid 19 epidemiological, presented the daily detected cases.

Summary of the epidemiological situation

Table (1) shows the numbers of cases

| | Samples | Confirmed | Recovered | Deaths | Active |
|-------|---------|-----------|-----------|--------|--------|
| Today | 1083 | 371 | 458 | 6 | 11964 |
| Total | 550428 | 102074 | 89196 | 914 | |

| | Closed Cases | |
|---------------|--------------|--------------------|
| | Gaza Strip | * Worldwide |
| Recovered | 89196 (99%) | 85,313,763 (96.4%) |
| Deaths | 914 (1%) | 3,117,624 (3.6%) |
| Total Closed | 90110 | 88,431,387 |
| | Active Cases | |
| <i>Number</i> | 11964 | 59,117,508 |

| Total vaccinations | People vaccinated (1 st Dose) | People fully vaccinated | Population percent |
|--------------------|------------------------------------------|-------------------------|--------------------|
| 110400 | 37372 | 28199 | 1.4% |

* https://en.wikipedia.org/wiki/COVID-19_pandemic_by_country_and_territory



Local reported cases within community – Emergency level (D)

- The total number of confirmed cases is 101743, of which 11957 are still active cases, 88873 cases fully recovered and were discharged, while the number of deaths reached 913 deaths.

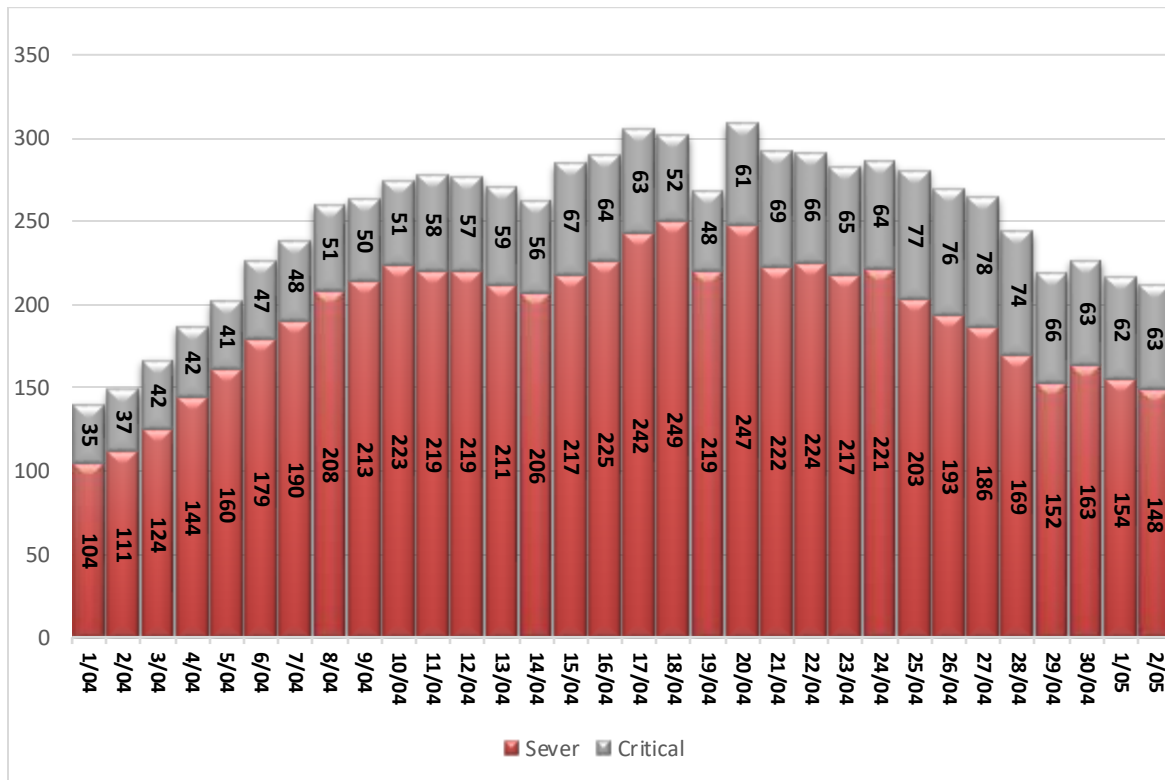
I. Classification of active cases according to severity

Table (2) shows the classification of cases according to the degree of severity

| Total | In Patient | | | | Mild | Classification |
|-------|------------|----------|-------|----------|-------|----------------|
| | Other | Critical | Sever | Moderate | | |
| 11964 | 19 | 63 | 148 | 66 | 11668 | Total |
| 100% | 0.2% | 0.5% | 1.2% | 0.6% | 97.5% | Percent |

*Cases needing medical care for reasons other than the corona

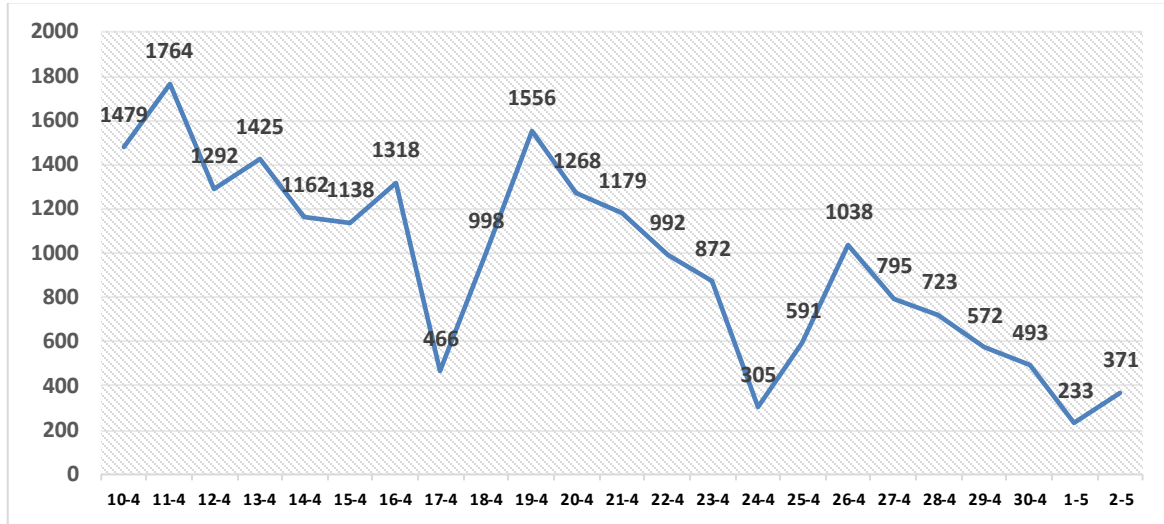
II. Daily classification of active cases according to severity



Graph (1) Shows the daily classification of cases according to degree of severity

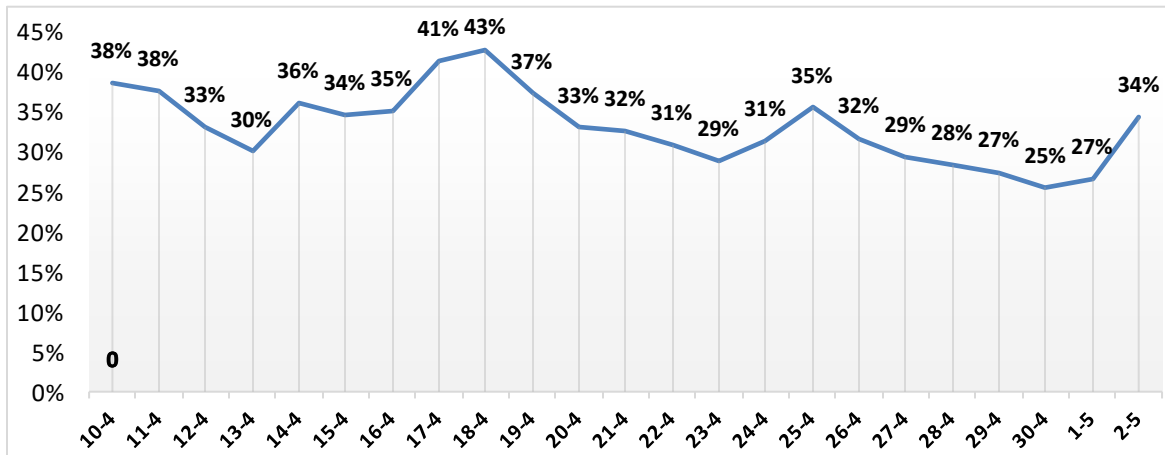


III. Daily number of new cases.



Graph (2) shows number of new cases per day within the community

IV. The percentage of positive tests of the daily samples



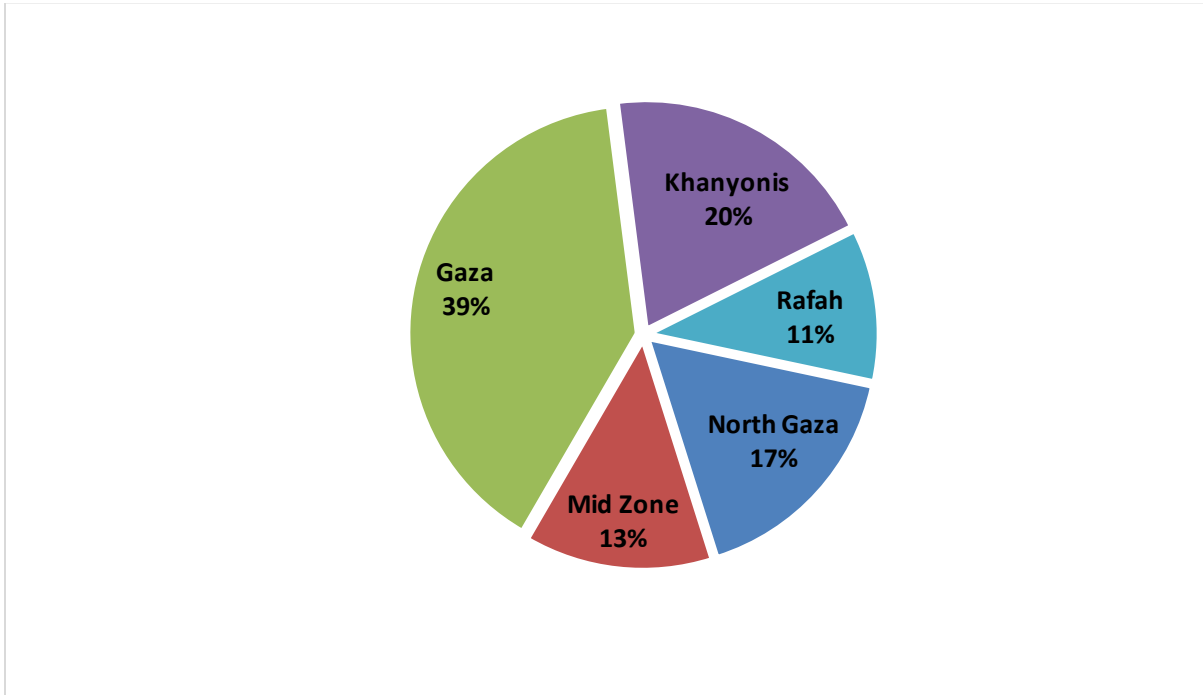
Graph (3) shows percentage of positive tests of the examined samples per day

V. Incidence of cases by governorate

| Governorate | Cases | Population | Incidence rate per 100,000 |
|-------------|--------|------------|----------------------------|
| North Gaza | 17065 | 403,457 | 4230 |
| Gaza | 40417 | 695,967 | 5807 |
| Mid zone | 13558 | 294,260 | 4607 |
| Khanyonis | 20128 | 401,582 | 5012 |
| Rafah | 10906 | 252,703 | 4316 |
| Gaza strip | 102074 | 2,047,969 | 4984 |

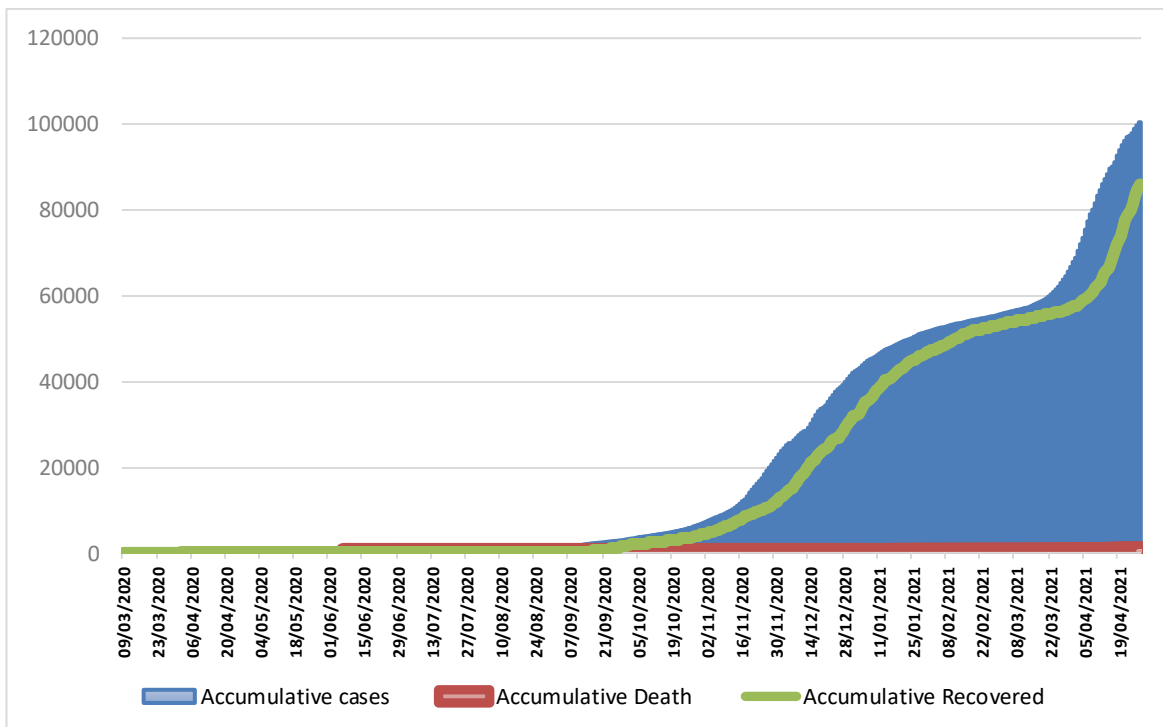


VI. Geographical distribution of confirmed cases.



Graph (4) shows geographical distribution of cases per governorate.

VII. Cumulative number of cases, recovered, deaths



Graph (5) shows Cumulative number of cases, recovered, deaths.