



Date: 06,05, 2021

10:00AM  
Last 24 Hr.

## Daily Report for COVID 19 Virus

Situation report about Covid 19 epidemiological, presented the daily detected cases.

### Summary of the epidemiological situation

Table (1) shows the numbers of cases

|       | Samples | Confirmed | Recovered | Deaths | Active |
|-------|---------|-----------|-----------|--------|--------|
| Today | 1686    | 439       | 1453      | 3      | 9677   |
| Total | 555944  | 103583    | 92976     | 930    |        |

|               | Closed Cases |                    |
|---------------|--------------|--------------------|
|               | Gaza Strip   | * Worldwide        |
| Recovered     | 92976 (99%)  | 89,625,669 (96.5%) |
| Deaths        | 930 (1%)     | 3,202,699 (3.5%)   |
| Total Closed  | 93906        | 92,828,368         |
|               | Active Cases |                    |
| <i>Number</i> | 9677         | 60,046,674         |

| Total vaccinations | People vaccinated (1 <sup>st</sup> Dose) | People fully vaccinated | Population percent |
|--------------------|--|-------------------------|--------------------|
| 110400             | 38168                                    | 30252                   | 1.9%               |

\* [https://en.wikipedia.org/wiki/COVID-19\\_pandemic\\_by\\_country\\_and\\_territory](https://en.wikipedia.org/wiki/COVID-19_pandemic_by_country_and_territory)



**Local reported cases within community – Emergency level (D)**

• The total number of confirmed cases is 103252, of which 9673 are still active cases, 92650 cases fully recovered and were discharged, while the number of deaths reached 929 deaths.

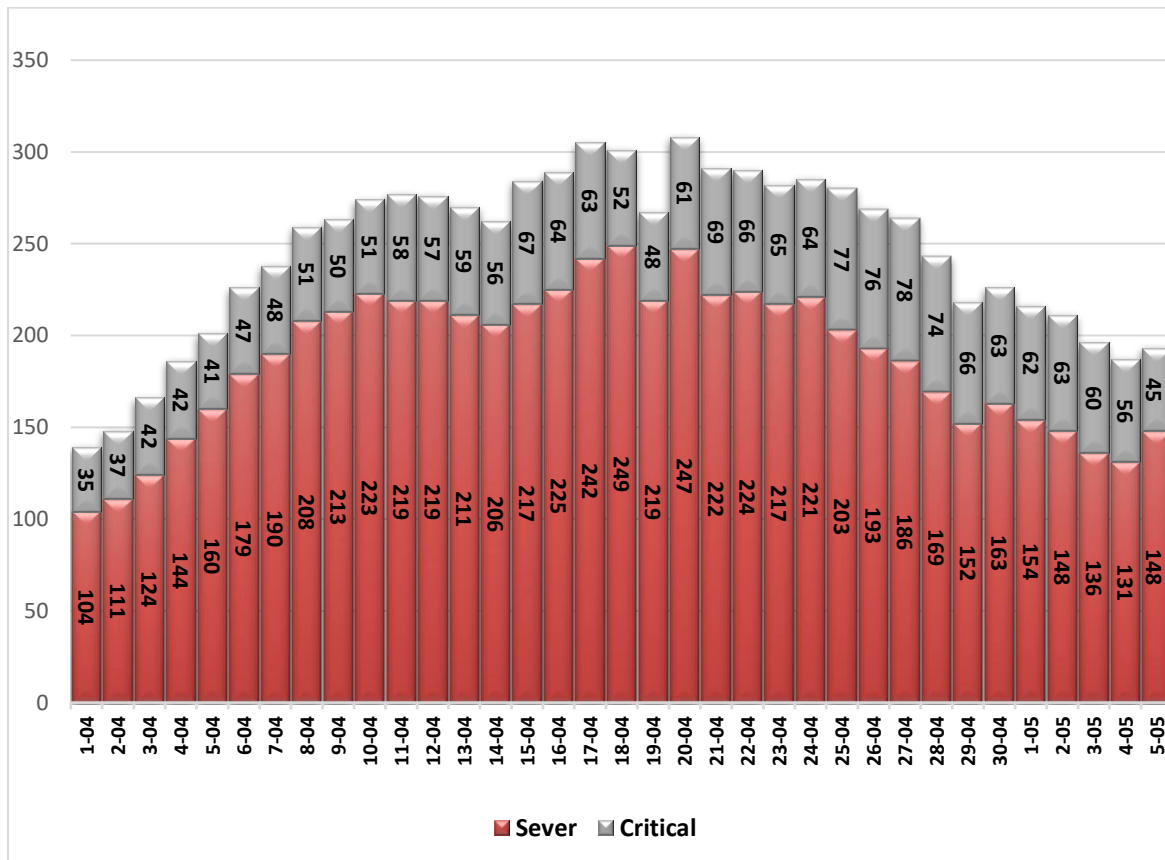
**I. Classification of active cases according to severity**

Table (2) shows the classification of cases according to the degree of severity

| Total | In Patient |          |       |          | Mild  | Classification |
|-------|------------|----------|-------|----------|-------|----------------|
|       | Other      | Critical | Sever | Moderate |       |                |
| 9677  | 12         | 45       | 148   | 45       | 9427  | Total          |
| 100%  | 0.1%       | 0.5%     | 1.5%  | 0.5%     | 97.4% | Percent        |

\*Cases needing medical care for reasons other than the corona

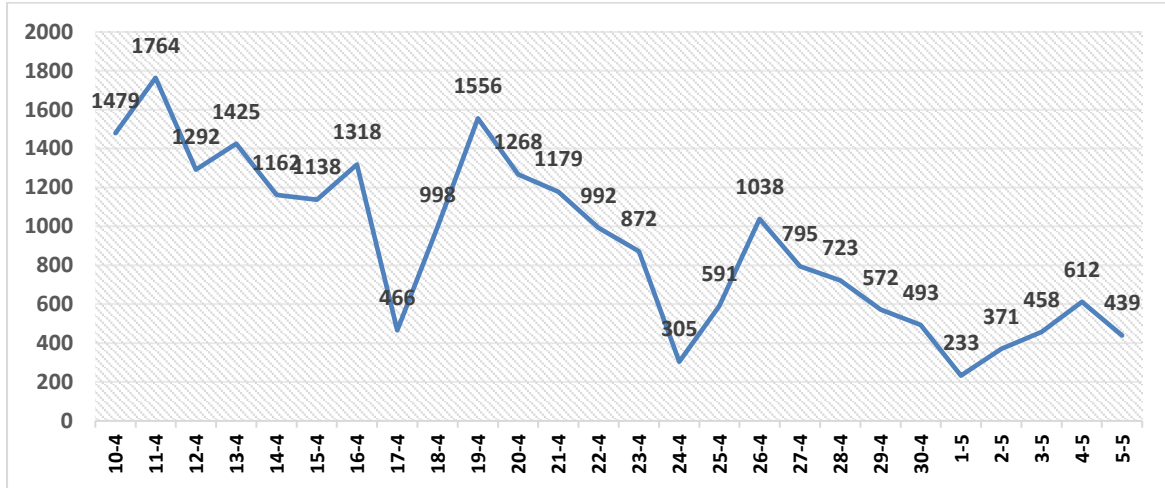
**II. Daily classification of active cases according to severity**



Graph (1) Shows the daily classification of cases according to degree of severity

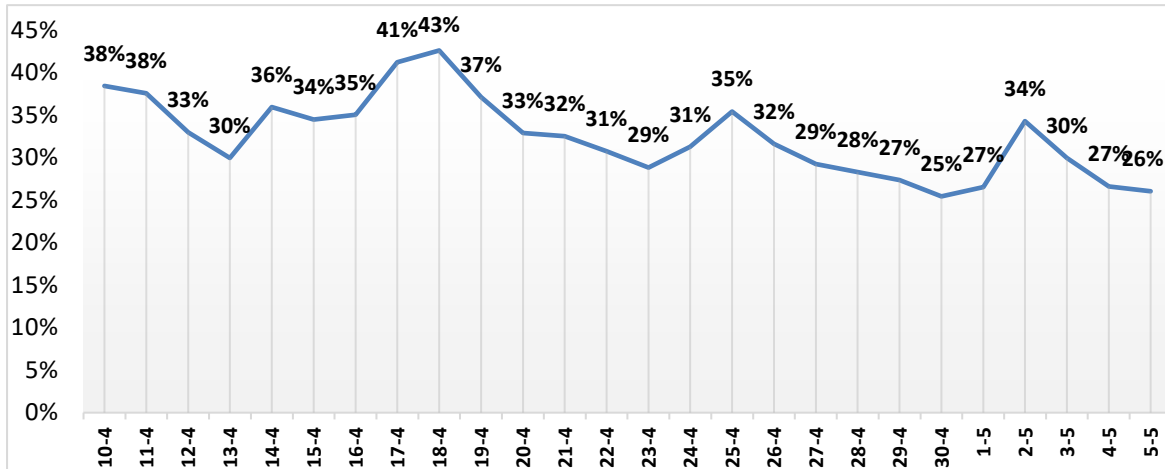


### III. Daily number of new cases.



Graph (2) shows number of new cases per day within the community

### IV. The percentage of positive tests of the daily samples



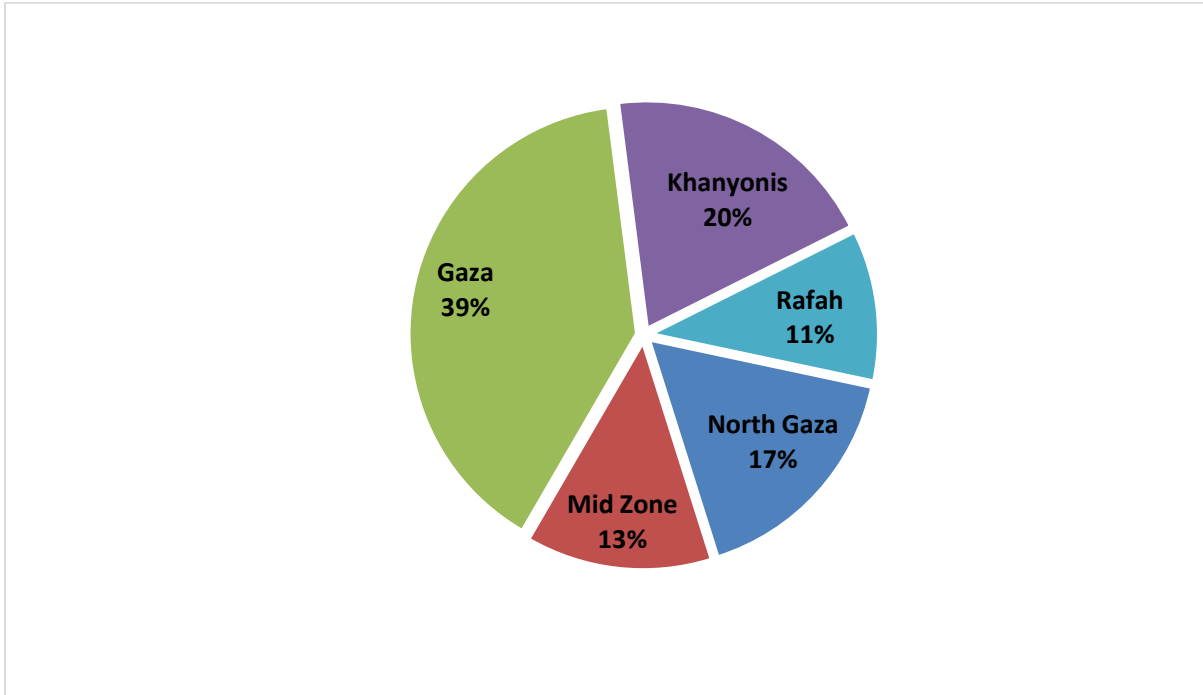
Graph (3) shows percentage of positive tests of the examined samples per day

### V. Incidence of cases by governorate

| Governorate | Cases  | Population | Incidence rate per 100,000 |
|-------------|--------|------------|----------------------------|
| North Gaza  | 17287  | 403,457    | 4285                       |
| Gaza        | 40975  | 695,967    | 5887                       |
| Mid zone    | 13809  | 294,260    | 4693                       |
| Khanyonis   | 20462  | 401,582    | 5095                       |
| Rafah       | 11050  | 252,703    | 4373                       |
| Gaza strip  | 103583 | 2,047,969  | 5058                       |

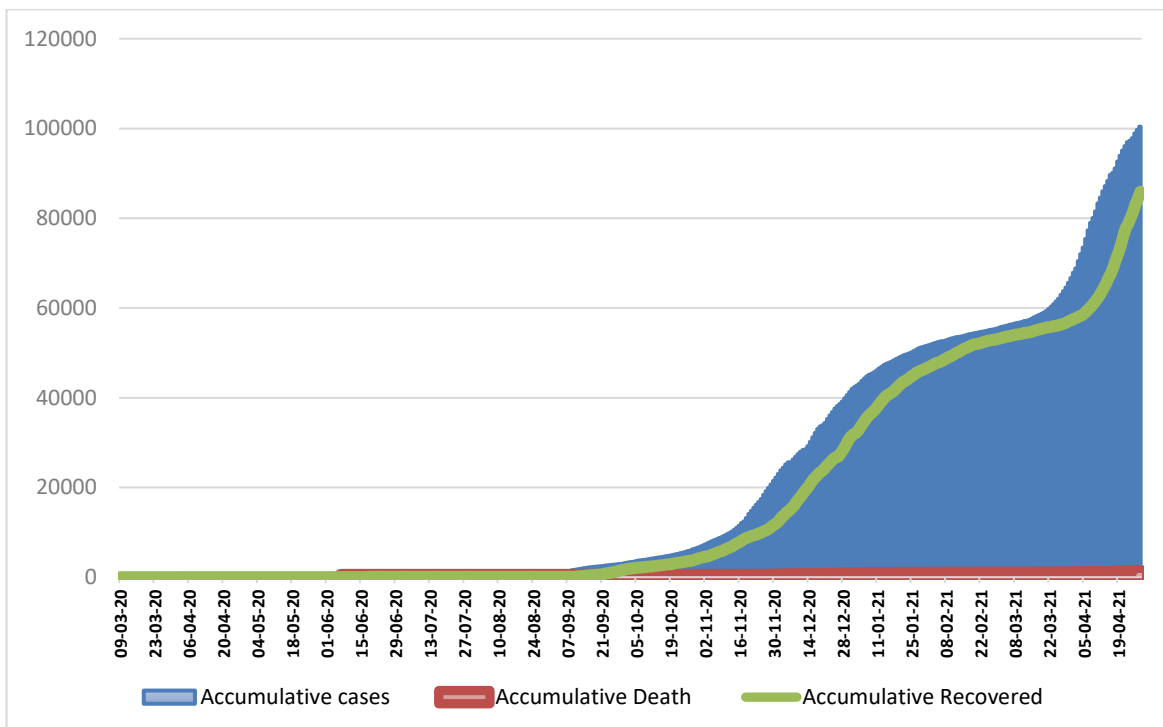


**VI. Geographical distribution of confirmed cases.**



Graph (4) shows geographical distribution of cases per governorate.

**VII. Cumulative number of cases, recovered, deaths**



Graph (5) shows Cumulative number of cases, recovered, deaths.