



Date: 19,06, 2021

10:00AM
Last 24 Hr.

Daily Report for COVID 19 Virus

Situation report about Covid 19 epidemiological, presented the daily detected cases.

Summary of the epidemiological situation

Table (1) shows the numbers of cases

	Samples	Confirmed	Recovered	Deaths	Active
Today	487	102	245	1	2904
Total	593400	112921	108965	1052	

	Closed Cases	
	Gaza Strip	* Worldwide
Recovered	108965 (99%)	161,233,145 (97.7%)
Deaths	1052 (1%)	3,809,317 (2.3%)
Total Closed	110017	165,042,462
	Active Cases	
<i>Number</i>	2904	11,165,498

Total vaccinations	People vaccinated (1 st Dose)	People fully vaccinated	Population percent
207200	54884	37112	2.7%

* https://en.wikipedia.org/wiki/COVID-19_pandemic_by_country_and_territory



Local reported cases within community – Emergency level (D)

• The total number of confirmed cases is 112587, of which 2904 are still active cases, 108632 cases fully recovered and were discharged, while the number of deaths reached 1051 deaths.

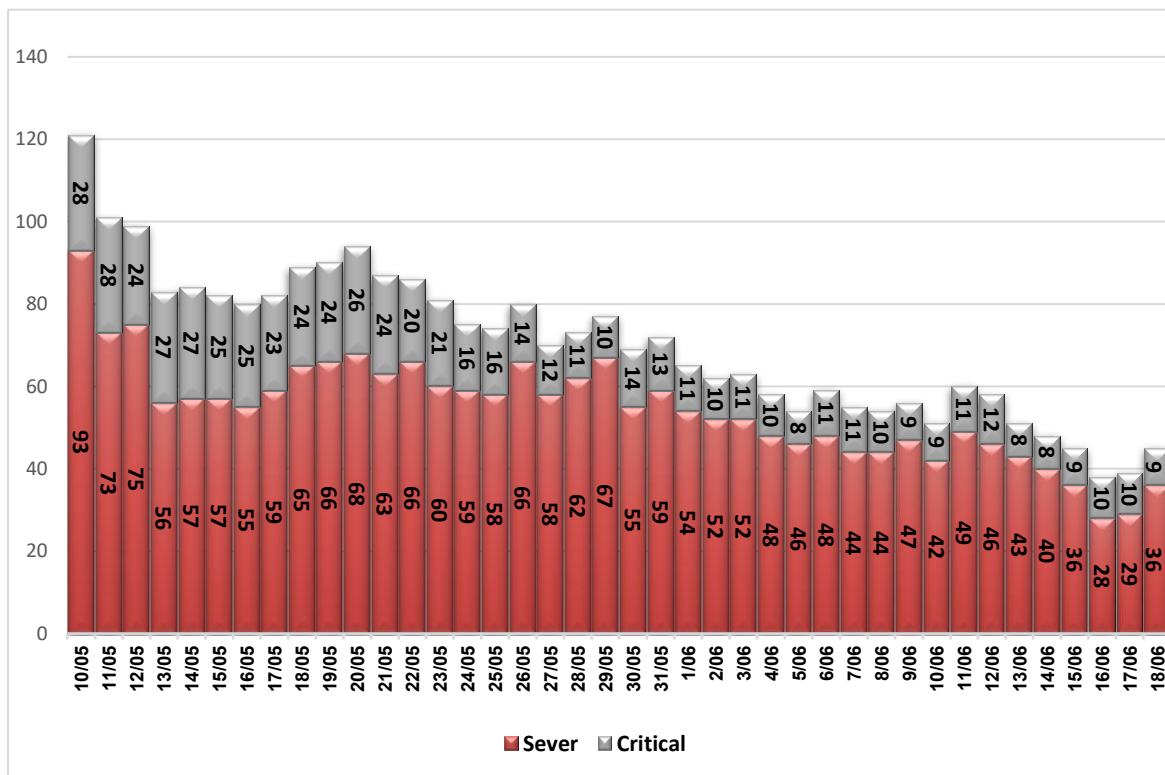
I. Classification of active cases according to severity

Table (2) shows the classification of cases according to the degree of severity

Total	In Patient				Mild	Classification
	Other	Critical	Sever	Moderate		
2904	5	9	36	12	2842	Total
100%	0.2%	0.3%	1.2%	0.4%	97.9%	Percent

*Cases needing medical care for reasons other than the corona

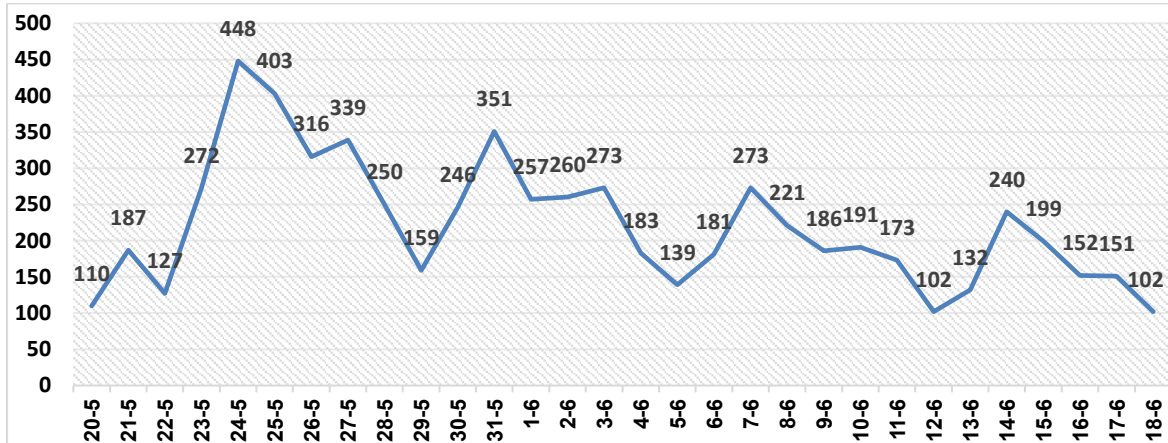
II. Daily classification of active cases according to severity



Graph (1) Shows the daily classification of cases according to degree of severity

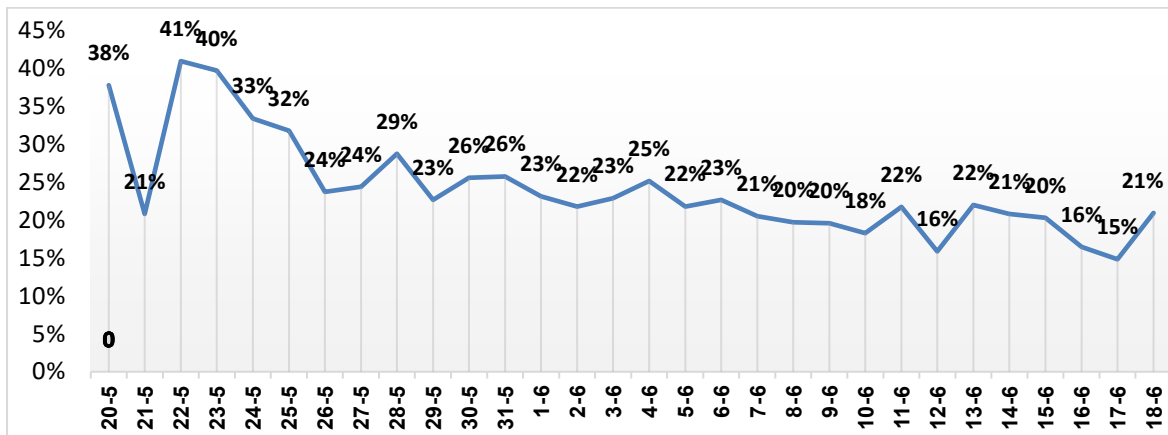


III. Daily number of new cases.



Graph (2) shows number of new cases per day within the community

IV. The percentage of positive tests of the daily samples



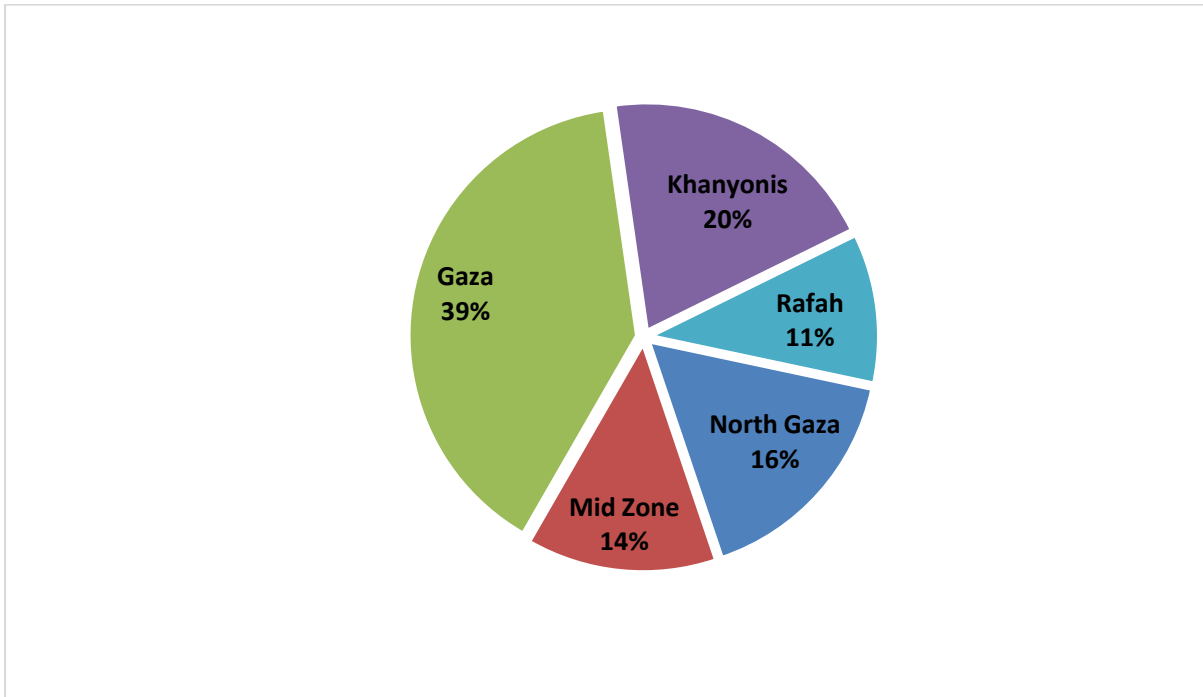
Graph (3) shows percentage of positive tests of the examined samples per day

V. Incidence of cases by governorate

Governorate	Cases	Population	Incidence rate per 100,000
North Gaza	18450	403,457	4573
Gaza	44427	695,967	6383
Mid zone	15378	294,260	5226
Khanyonis	22751	401,582	5665
Rafah	11915	252,703	4715
Gaza strip	112921	2,047,969	5514

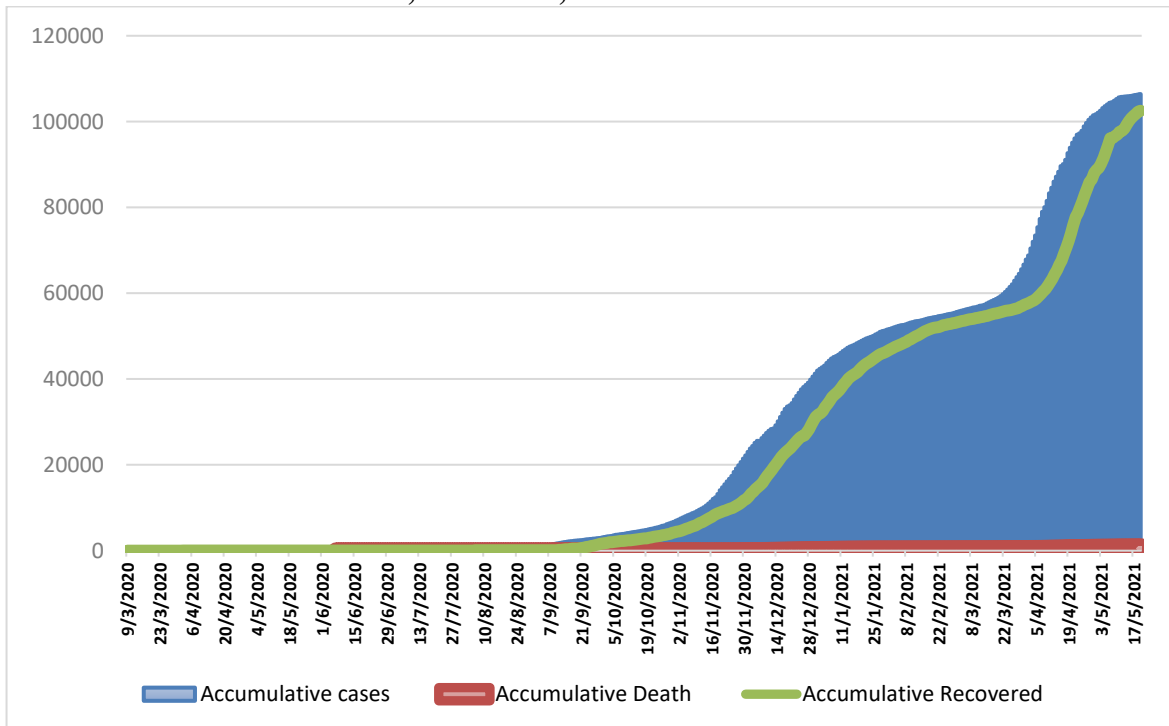


VI. Geographical distribution of confirmed cases.



Graph (4) shows geographical distribution of cases per governorate.

VII. Cumulative number of cases, recovered, deaths



Graph (5) shows Cumulative number of cases, recovered, deaths.