



Date: 30,06, 2021

10:00AM
Last 24 Hr.

Daily Report for COVID 19 Virus

Situation report about Covid 19 epidemiological, presented the daily detected cases.

Summary of the epidemiological situation

Table (1) shows the numbers of cases

	Samples	Confirmed	Recovered	Deaths	Active
Today	926	140	133	1	2261
Total	602107	114345	111021	1063	

	Closed Cases	
	Gaza Strip	* Worldwide
Recovered	111021 (99%)	166,751,611 (97.7%)
Deaths	1063 (1%)	3,928,598 (2.3%)
Total Closed	112084	170,680,209
	Active Cases	
<i>Number</i>	2261	11,165,498

Total vaccinations	People vaccinated (1 st Dose)	People fully vaccinated	Population percent
207200	73847	41527	3.6%

* https://en.wikipedia.org/wiki/COVID-19_pandemic_by_country_and_territory



Local reported cases within community – Emergency level (D)

- The total number of confirmed cases is 114011, of which 2261 are still active cases, 110688 cases fully recovered and were discharged, while the number of deaths reached 1062 deaths.

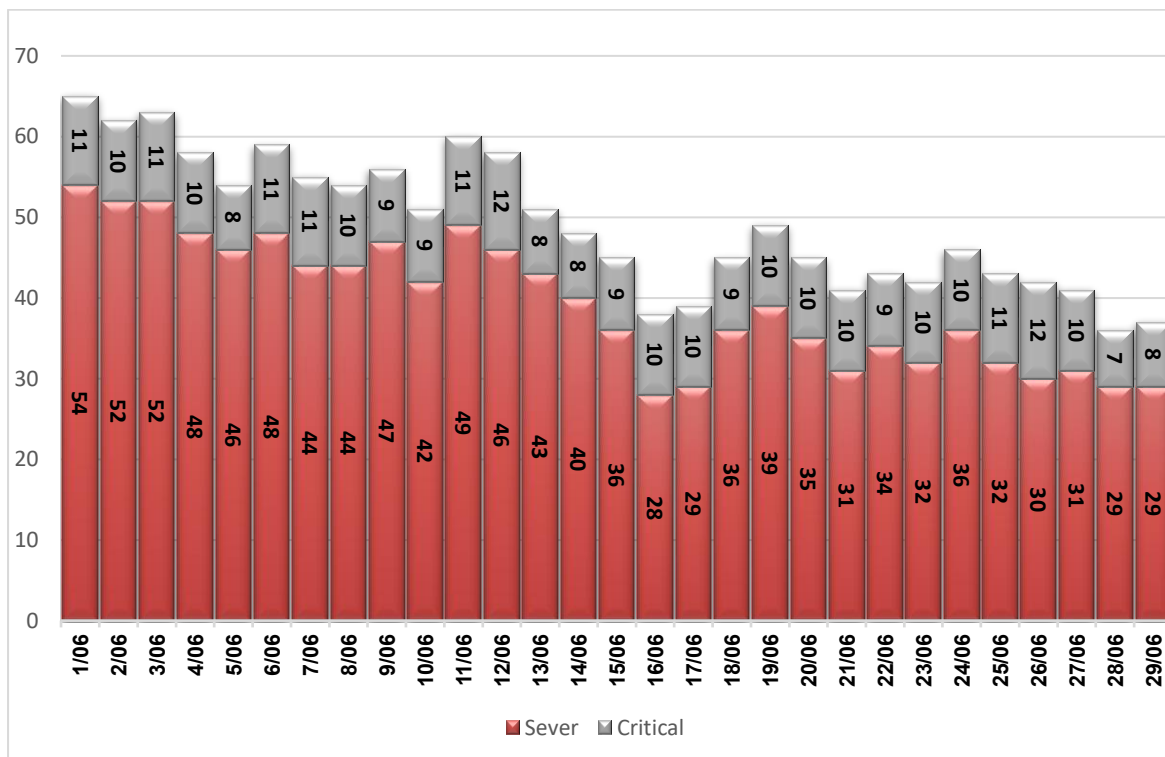
I. Classification of active cases according to severity

Table (2) shows the classification of cases according to the degree of severity

Total	In Patient				Mild	Classification
	Other	Critical	Sever	Moderate		
2261	2	8	29	16	2206	Total
100%	0.1%	0.4%	1.3%	0.7%	97.6%	Percent

*Cases needing medical care for reasons other than the corona

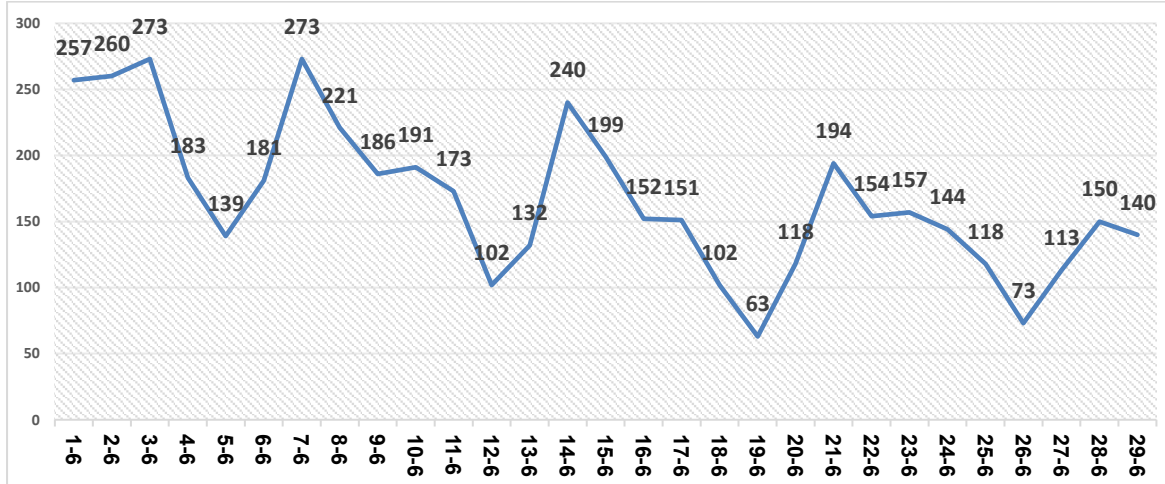
II. Daily classification of active cases according to severity



Graph (1) Shows the daily classification of cases according to degree of severity

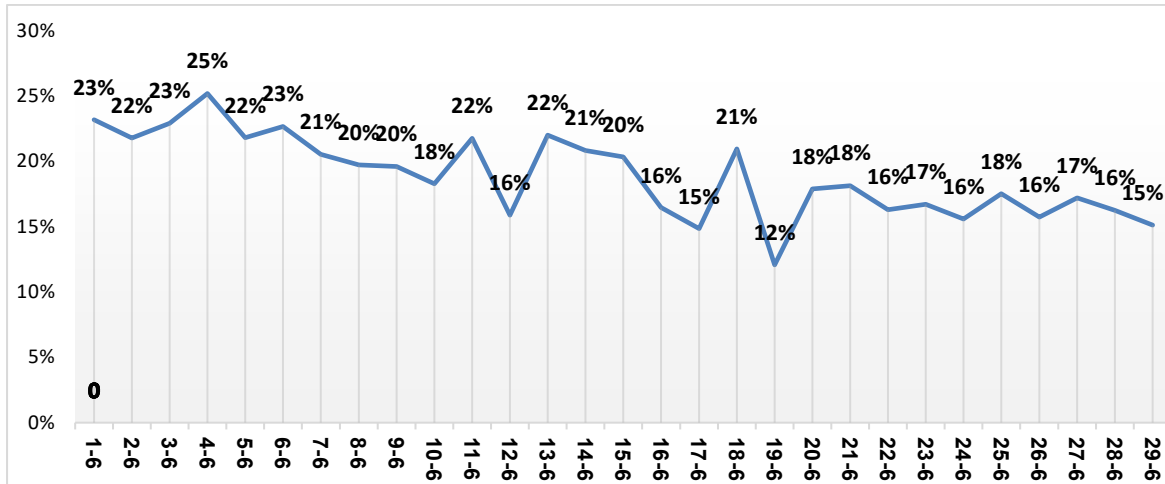


III. Daily number of new cases.



Graph (2) shows number of new cases per day within the community

IV. The percentage of positive tests of the daily samples



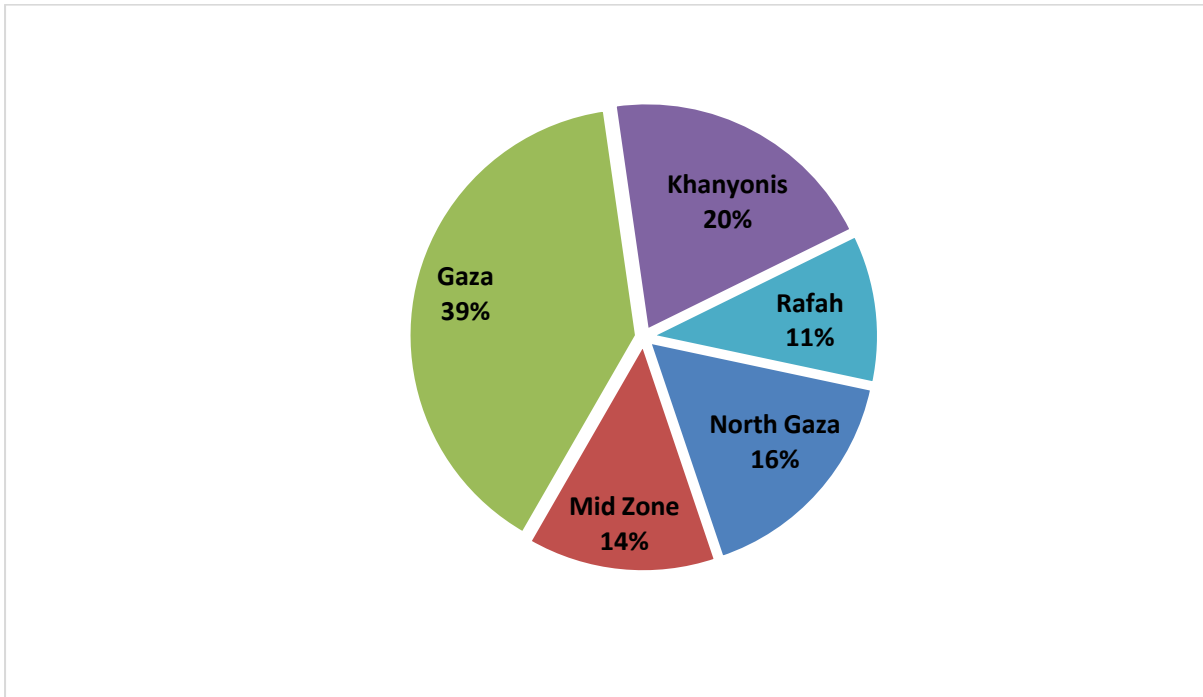
Graph (3) shows percentage of positive tests of the examined samples per day

V. Incidence of cases by governorate

Governorate	Cases	Population	Incidence rate per 100,000
North Gaza	18595	403,457	4609
Gaza	44953	695,967	6459
Mid zone	15646	294,260	5317
Khanyonis	23120	401,582	5757
Rafah	12031	252,703	4761
Gaza strip	114345	2,047,969	5583

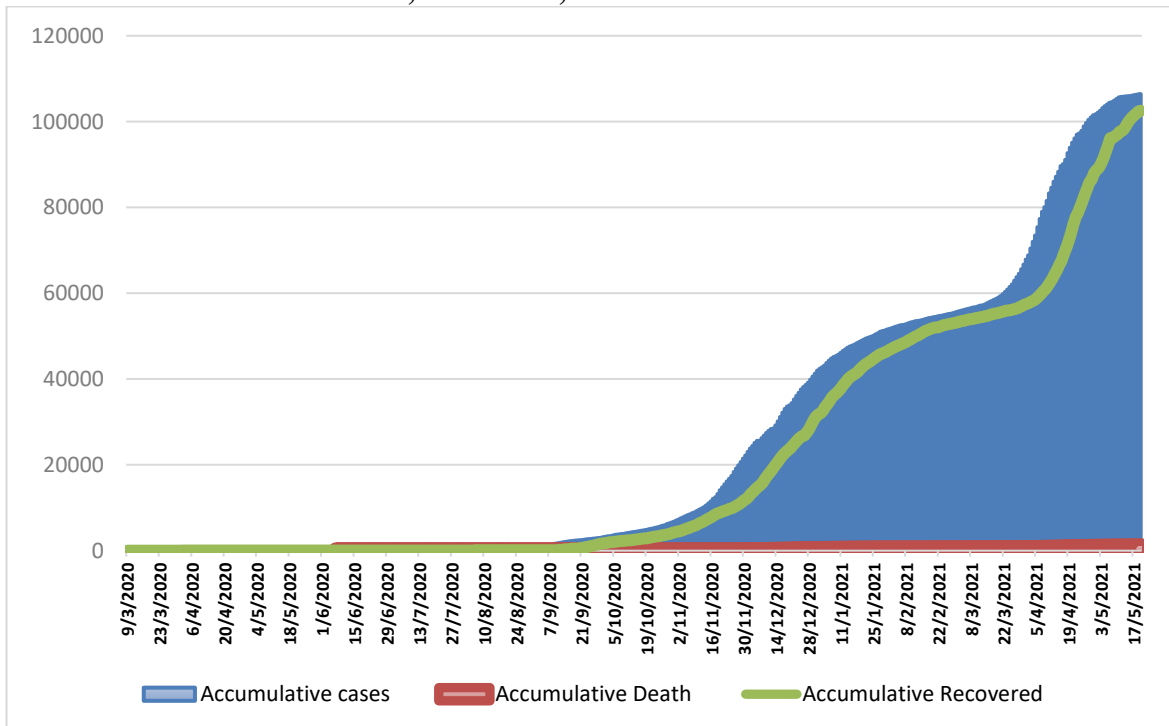


VI. Geographical distribution of confirmed cases.



Graph (4) shows geographical distribution of cases per governorate.

VII. Cumulative number of cases, recovered, deaths



Graph (5) shows Cumulative number of cases, recovered, deaths.