



Date: 16,07, 2021

10:00AM
Last 24 Hr.

Daily Report for COVID 19 Virus

Situation report about Covid 19 epidemiological, presented the daily detected cases.

Summary of the epidemiological situation

Table (1) shows the numbers of cases

	Samples	Confirmed	Recovered	Deaths	Active
Today	557	61	45	1	1455
Total	611922	115544	113010	1079	

	Closed Cases	
	Gaza Strip	* Worldwide
Recovered	113010 (99%)	166,751,611 (97.7%)
Deaths	1079 (1%)	3,928,598 (2.3%)
Total Closed	114089	170,680,209
	Active Cases	
<i>Number</i>	1455	11,165,498

Total vaccinations	People vaccinated (1 st Dose)	People fully vaccinated	Population percent
226300	95144	54034	4.6%

* https://en.wikipedia.org/wiki/COVID-19_pandemic_by_country_and_territory



Local reported cases within community – Emergency level (D)

• The total number of confirmed cases is 115210, of which 1455 are still active cases, 112677 cases fully recovered and were discharged, while the number of deaths reached 1078 deaths.

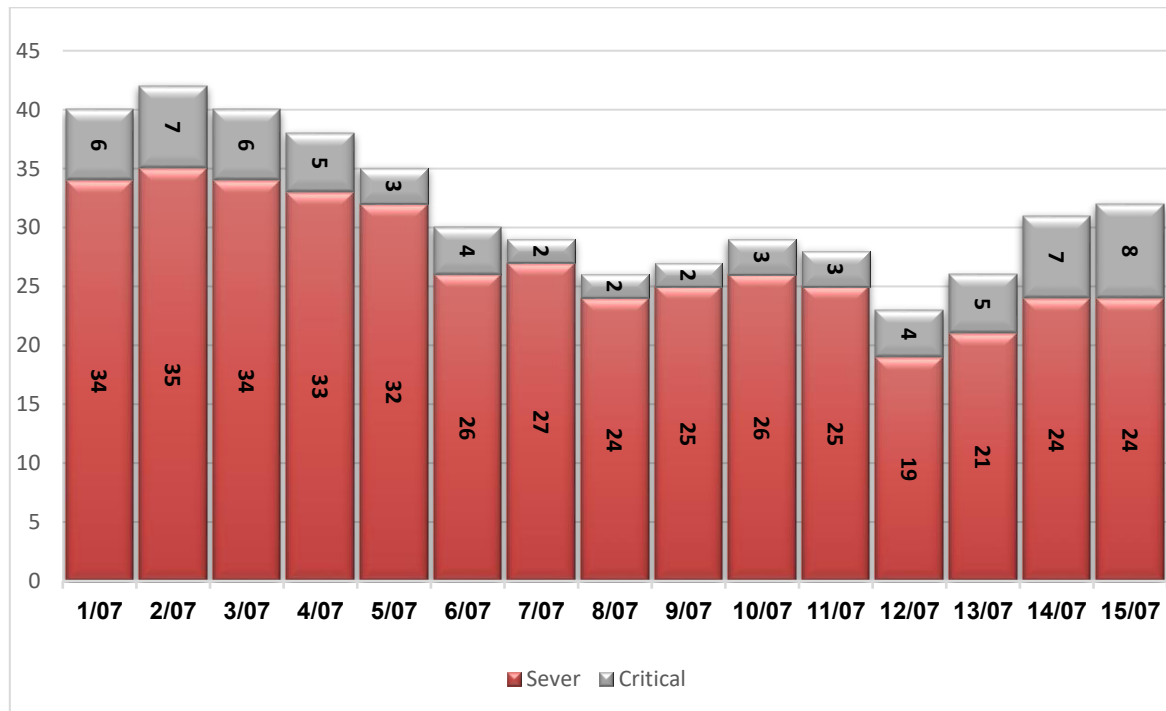
I. Classification of active cases according to severity

Table (2) shows the classification of cases according to the degree of severity

Total	In Patient				Mild	Classification
	Other	Critical	Sever	Moderate		
1455	0	8	24	7	1416	Total
100%	0.0%	0.5%	1.6%	0.5%	97.3%	Percent

*Cases needing medical care for reasons other than the corona

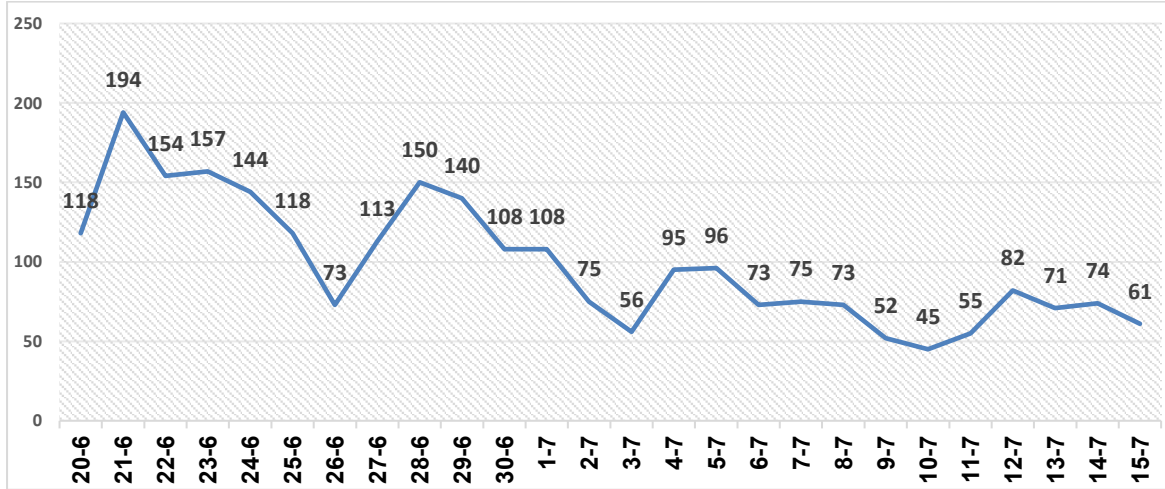
II. Daily classification of active cases according to severity



Graph (1) Shows the daily classification of cases according to degree of severity

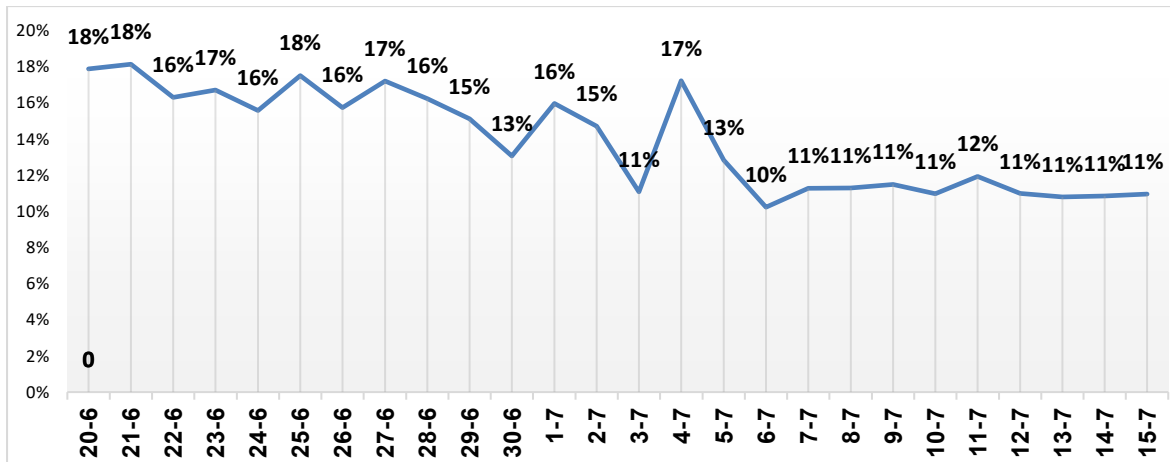


III. Daily number of new cases.



Graph (2) shows number of new cases per day within the community

IV. The percentage of positive tests of the daily samples



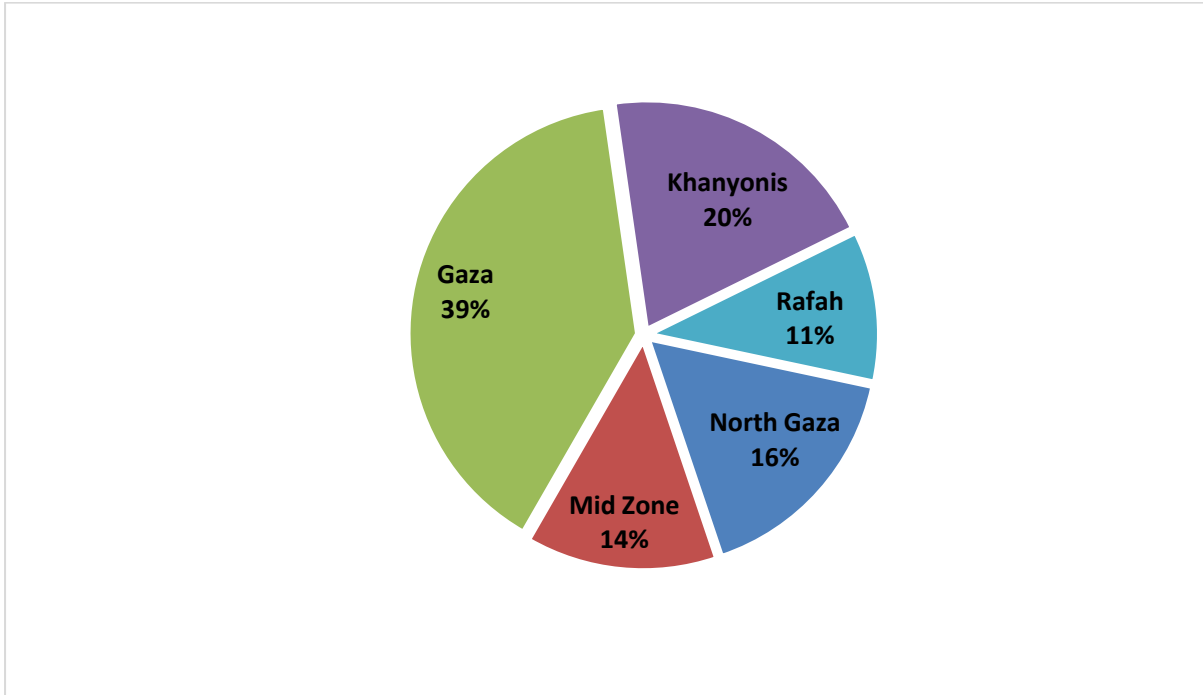
Graph (3) shows percentage of positive tests of the examined samples per day

V. Incidence of cases by governorate

Governorate	Cases	Population	Incidence rate per 100,000
North Gaza	18704	403,457	4636
Gaza	45354	695,967	6517
Mid zone	15919	294,260	5410
Khanyonis	23427	401,582	5834
Rafah	12140	252,703	4804
Gaza strip	115544	2,047,969	5642

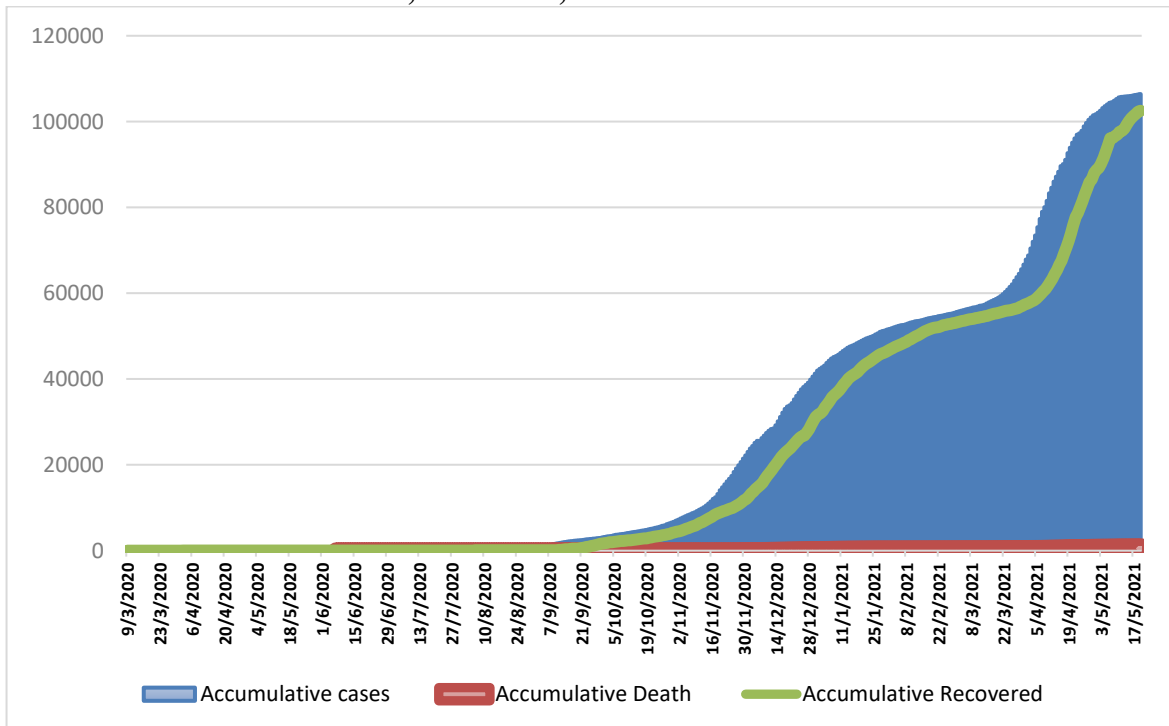


VI. Geographical distribution of confirmed cases.



Graph (4) shows geographical distribution of cases per governorate.

VII. Cumulative number of cases, recovered, deaths



Graph (5) shows Cumulative number of cases, recovered, deaths.